

BRANDS HATCH

CLUBMAN'S CAR RACES

Sunday April 17 1966 Programme 2s 6d

Organised by the 750 Motor Club for Brands Hatch Circuit Ltd.



Autocar

FIRST AWAY AND ALWAYS AHEAD

FRIDAY 2s.

1966 SEASON BROOCHES

Ideal presents

ORDER NOW AND SAVE UP TO 70%

Please send me 1966 Season Brooches and Reserved Car Park label as follows:

Brands Hatch 1966 Car Season	Normal Cost	COST	£	s.	d.
FIVE GUINEAS. Admitting to public enclosures and Paddock for all 36 events (except Grand Prix and Kart and Stock Car meetings)	£15.17.0	£5.5.0		
FOUR GUINEAS. Members of the BRSCC and Circuit Car Clubs		£4.4.0		
THREE GUINEAS only for each accompanying lady or child		£3.3.0		
Mallory Park 1966 Car Season					
FOUR GUINEAS. Admitting to public enclosures and Paddock for all 18 events	£9.18.6	£4.4.0		
THREE GUINEAS. Members of the BRSCC and Circuit Car Clubs		£3.3.0		
TWO GUINEAS only for each accompanying lady or child		£2.2.0		
Snetterton 1966 Car Season					
FOUR GUINEAS. Admitting to public enclosures and Paddock for all 18 events	£9.0.0	£4.4.0		
THREE GUINEAS. Members of the SMRC, BRSCC and Circuit Car Clubs		£3.3.0		
TWO GUINEAS only for each accompanying lady or child		£2.2.0		
Brands Hatch 1966 Motorcycle Racing & Scrambles					
FIFTY SHILLINGS. Admitting to public enclosures for all 15 events including six Internationals	£6.0.0	£2.10.0		
Mallory Park 1966 Motorcycle Racing					
TWO GUINEAS. Admitting to public enclosures for all 10 events including three Internationals	£4.15.0	£2.2.0		
Snetterton 1966 Motorcycle Racing					
THIRTY SHILLINGS. Admitting to public enclosures for all 16 events, including one International and three National	£5.0.0	£1.10.0		
PARKING FREE—CAR AND MOTORCYCLE EVENTS					
		TOTAL	£		

Send this application form and your remittance to the appropriate circuit :

Brands Hatch Circuit Ltd.
Fawkham, Nr. Dartford,
Kent.

Mallory Park Circuit Ltd.
Kirkby Mallory,
Leicester

Snetterton Circuit Ltd.
Attleborough,
Norfolk.

NAME.....

ADDRESS.....

CLUB (if applicable)..... Membership No.....

Motor Racing — 17th April 1966

**For Racing Cars, Sports Cars, Saloon Cars
and Grand Touring Cars**

Brands Hatch

Eligible Competitors:— Members of the Seven Fifty Motor Club and the following invited Clubs:

B.R. & S.C.C.

B.A.R.C.

M.G.C.C.

Monoposto Register

Mini Seven Club

Notts. S.C.C.

S. & D.M.C.

S.S.M.C.

Austin Healey Club

T.E.A.C.

R.A.C. PERMIT No. RS 2033

Officials

Stewards :

For the R.A.C.—

G. Cobban

For the 750 M.C.—

A. J. Mallet

K. E. C. Barton

Judges :

V. G. M. Butler

J. Ashwell

Clerk of the Course :

P. K. Dawe

Secretary of the Meeting :

A. W. Butler

Chief Timekeeper :

C. F. Medlen

Chief Scrutineer :

J. F. Moon

Commentator :

N. Greenway

Chief Marshal :

B. P. Goodall

Chief Paddock Marshals :

L. Long

E. Rook

Press Officer :

D. Reach

Chief Start Line Marshal :

K. Seymour-Walker

Starter :

D. Berry

Results Marshal :

C. Peck

Medical Officers :

Dr. J. G. McLaggan

Dr. K. P. Sheldon

Medical Services :

St. John Ambulance Brigade

Marshals :

Members of the
Seven Fifty Motor Club

BRANDS HATCH CIRCUIT LTD.—

Managing Director :

John Webb

General Manager :

C. J. D. Lowe

This meeting is organised by
THE SEVEN FIFTY MOTOR CLUB LTD.

For the Attention of Spectators

Please do not leave litter about the grounds — take it with you.

The Seven Fifty Motor Club Ltd. acknowledge with thanks the valuable assistance given by the individual marshals in conducting this event.

If an accident occurs, leave it to the marshals, the doctors and St. John Ambulance men who are in attendance.

Remember to drive with care and caution when leaving the ground.

To safeguard both competitors and public — *dogs are not admitted unless kept on a leash. This is most important.*

PROHIBITED AREA NOTICES — The public are not permitted in the areas where these notices are displayed. The fences are there for protection, and any person or persons found trespassing, or wilfully damaging trees, fences, etc., will be prosecuted by Brands Hatch Circuit Ltd.

Flag Signals

UNION JACK	<i>Start.</i>
RED	<i>Stop immediately.</i>
YELLOW (Waved)	<i>Great danger; be prepared to stop.</i>
YELLOW (Motionless)	<i>Take care; danger.</i>
BLUE (Waved)	<i>Another competitor is trying to overtake.</i>
BLUE (Motionless)	<i>Another competitor is following closely.</i>
YELLOW with Red Stripes	<i>Oil on the course.</i>
WHITE	<i>An ambulance or service car is on the course.</i>
BLACK (With number)	<i>Car with that number must call in to the pits.</i>
BLACK & WHITE CHEQUERED	<i>Signal for end of the race.</i>

Acknowledgements

Breakdown Services: Epps Bros.

Course Cars: Ford Galaxie Convertible —
Lincoln Cars, Great West Road, Brentford, Middx.

Auto Union Audi

Auto Union (G.B.) Ltd.

Programme of Events and Awards

- RACE 1. TEN LAP SCRATCH RACE**
for sports racing cars complying with the 1172 Formula.
- RACE 2. TEN LAP SCRATCH RACE**
for saloon cars complying with the Formula Mini Seven.
- RACE 3. TEN LAP SCRATCH RACE**
for sports racing cars complying with the 750 Formula.
- RACE 4. TEN LAP SCRATCH RACE**
for Sports and G.T. cars in two classes:
Class A Up to 1400 c.c.
Class B Over 1400 c.c.
- RACE 5. TEN LAP SCRATCH RACE**
for racing cars complying with the Monoposto Register Formula.
- RACE 6. TEN LAP SCRATCH RACE**
for saloon cars in two classes:
Class A Up to 1500 c.c.
Class B Over 1500 c.c.
- RACE 7. TEN LAP SCRATCH RACE**
for single seater racing cars of unlimited capacity.

RACE 1.	1st, 2nd and 3rd	Trophies
RACE 2.	1st, 2nd and 3rd	Trophies
RACE 3.	1st, 2nd and 3rd	Trophies
RACE 4.	1st and 2nd in each class (excluding 1st overall)	Trophies
RACE 5.	1st, 2nd and 3rd	Trophies
RACE 6.	1st and 2nd in each class (excluding 1st overall)	Trophies
RACE 7.	1st, 2nd and 3rd	Trophies

On Sunday, 17th April **Scrutineering** from 8.00 a.m.
 Practising from 9.00 a.m.

Starting Positions

Grid positions in all races will be determined by the Competitor's Lap Times recorded by the Official Timekeeper during practice

BRANDS HATCH SPEED TABLE — 1 LAP = 1.24 MILES

Time secs.	Speed mph	Time secs.	Speed mph	Time secs.	Speed mph	Time secs.	Speed mph	Time secs.	Speed mph
50.0	89.28	55.0	81.16	59.0	75.66	63.0	70.86	67.0	66.63
50.2	88.92	55.2	80.87	59.2	75.41	63.2	70.63	67.2	66.43
50.4	88.57	55.4	80.58	59.4	75.15	63.4	70.41	67.4	66.23
50.6	88.22	55.6	80.29	59.6	74.90	63.6	70.19	67.6	66.04
50.8	87.87	55.8	80.00	59.8	74.65	63.8	69.97	67.8	65.84
51.0	87.53	56.0	79.71	60.0	74.40	64.0	69.75	68.0	65.65
51.2	87.19	56.2	79.43	60.2	74.15	64.2	69.53	68.2	65.45
51.4	86.85	56.4	79.15	60.4	73.91	64.4	69.32	68.4	65.26
51.6	86.51	56.6	78.87	60.6	73.66	64.6	69.10	68.6	65.07
51.8	86.18	56.8	78.59	60.8	73.42	64.8	68.89	68.8	64.88
52.0	85.85	57.0	78.32	61.0	73.18	65.0	68.68	69.0	64.70
52.2	85.52	57.2	78.04	61.2	72.94	65.2	68.47	69.2	64.51
52.4	85.19	57.4	77.77	61.4	72.70	65.4	68.26	69.4	64.32
52.6	84.87	57.6	77.50	61.6	72.47	65.6	68.02	69.6	64.14
52.8	84.55	57.8	77.23	61.8	72.23	65.8	67.84	69.8	63.95
53.0	84.23	58.0	76.97	62.0	72.00	66.0	67.64	70.0	63.77
53.2	83.91	58.2	76.70	62.2	71.77	66.2	67.43	70.2	63.59
53.4	83.60	58.4	76.44	62.4	71.54	66.4	67.23	70.4	63.41
53.6	83.28	58.6	76.18	62.6	71.31	66.6	67.03	70.6	63.23
53.8	82.97	58.8	75.92	62.8	71.08	66.8	66.83	70.8	63.05
54.0	82.67								
54.2	82.36								
54.4	82.06								
54.6	81.76								
54.8	81.46								

$$\text{SPEED (in m.p.h.)} = \frac{1.24 \times 3600 \times \text{No. of laps}}{\text{TIME (in seconds)}}$$

Condition of Admission

Spectators attending the track do so entirely at their own risk. It is a condition of admission that the Brands Hatch Circuit Limited and all persons having any connection with the promotion and/or organisation and/or conduct of the meeting (including the drivers and owners of vehicles and passengers in vehicles) are absolved from all responsibility and liability whatsoever from negligence, or by accident causing loss, damage or personal injury to spectators or ticket holders, or to their goods or vehicles.

Postponement of the Meeting

The Club reserves the right to postpone or cancel the meeting.



WESTERN MOTOR WORKS
 Perry Street, Chislehurst — Princes Road, Dartford
 FO0tsoray 1122 DA. 24721

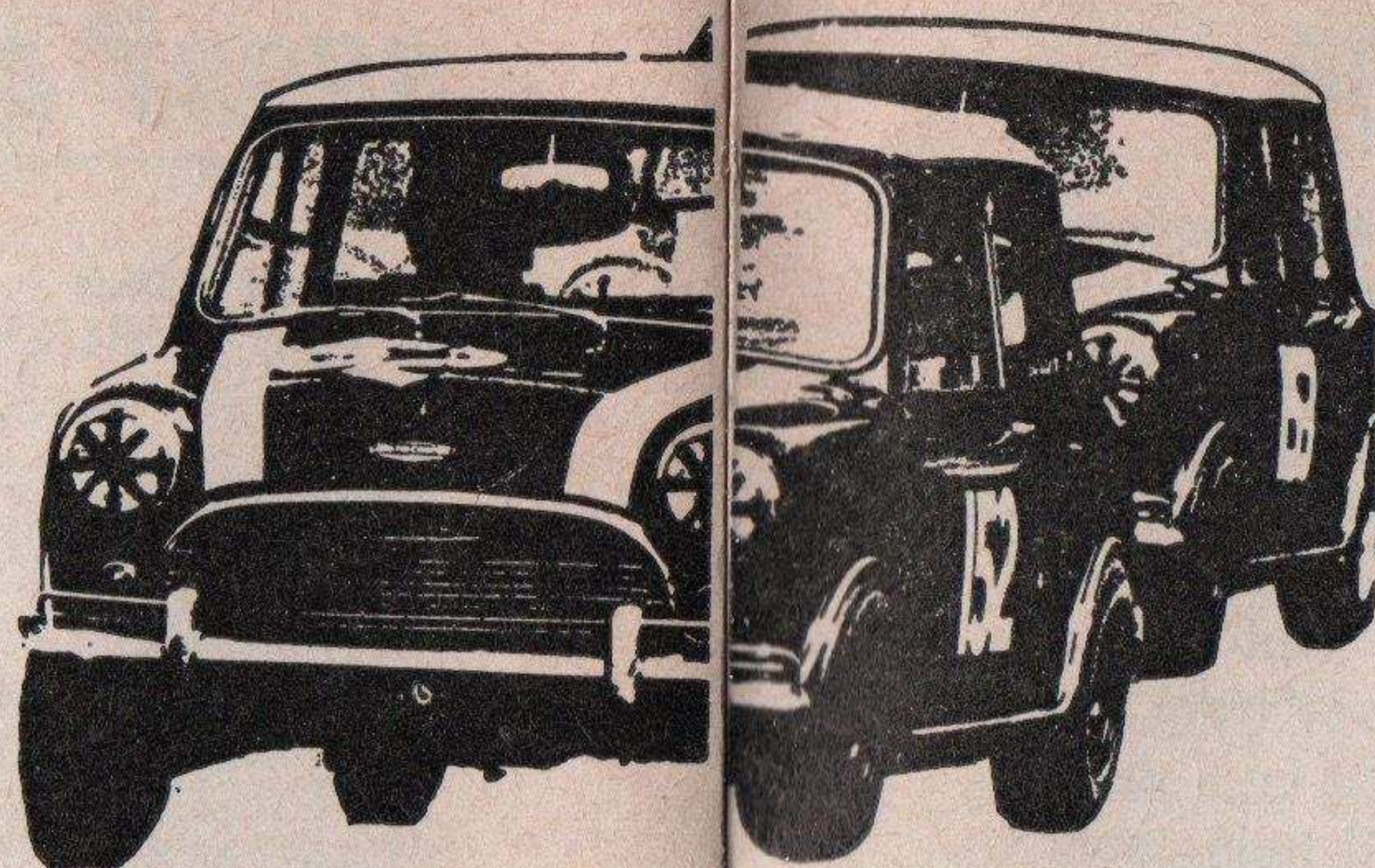
**VAUXHALL
 MAIN
 DISTRIBUTORS**

SHORT CIRCUIT FASTEST LAPS

	c.c.	Car	secs.	m.p.h.
Formule Libre				
D. C. HULME ..	1973	Repco Brabham BT8 Climax	52.6	84.87
<i>(outright fastest lap)</i>				
Unlimited Single Seater Racing Cars				
D. E. O'SULLIVAN		Repco Brabham-Cosworth Ford	52.8	84.55
Single Seater Formula 3 Cars				
P. COURAGE ..	997	Repco Brabham-Ford		
C. CRICHTON-STUART	997	Repco Brabham-Ford	54.0	82.67
R. MAC ..	997	Repco Brabham-Ford		
Sports Cars — Over 1150 c.c.				
T. HITCHCOCK	1973	Repco Brabham BT8 Climax	54.8	81.46
Sports Cars — From 1001 c.c. to 1150 c.c.				
R. NATHAN ..	1005	Costin Nathan ..	55.4	80.58
Sports Cars — Up to 1000 c.c.				
C. LACEY ..	997	Merlyn Ford ..	59.0	75.66
Special G.T. Cars — Over 2500 c.c.				
R. MAC ..	4727	Shelby American Cobra	56.6	78.87
Special G.T. Cars — From 1601 c.c. to 2500 c.c.				
J. J. MILES ..	1650	Diva Ford ..	57.8	77.23
Special G.T. Cars — From 1151 c.c. to 1600 c.c.				
R. PARSONS ..	1594	Lotus Elan ..		
J. OLIVER ..	1594	Lotus Elan ..	57.0	78.32
J. MILES ..	1594	Lotus Elan ..		
Special G.T. Cars — Up to 1150 c.c.				
J. MARKEY ..	1098	Emery G.T. ..	58.0	76.97
Saloon Cars — Over 1300 c.c.				
M. YOUNG ..	1650	Ford Anglia ..		
T. J. DRURY ..	1718	Ford Anglia ..		
D. P. MERFIELD	4727	Ford Cortina V8	59.0	75.66
D. GARRETT ..	1650	Ford Anglia ..		
Saloon Cars — From 1001 c.c. to 1300 c.c.				
B. COX ..	1293	Morris Mini-Cooper 'S'	59.0	75.66
Saloon Cars — From 851 c.c. to 1000 c.c.				
B. UNETT ..	998	Hillman Imp ..	59.8	74.65
Saloon Cars — Up to 850 c.c.				
B. UNETT ..	850	Hillman Imp ..		
R. CALCUTT ..	848	Hillman Imp ..	62.4	71.54
Marque Sports Cars — Over 3000 c.c.				
W. PEARCE ..	3781	Jaguar 'E' Type ..	60.6	73.66
Marque Sports Cars — 1151 c.c. to 3000 c.c.				
R. ENEVER ..	1293	M.G. Midget ..	60.6	73.66
Marque Sports Cars — Up to 1150 c.c.				
J. MAUN ..	1098	Austin Healey Sprite	62.2	71.77
Clubman's Formula Sports Cars — Up to 1000 c.c.				
P. W. WELSTEAD	997	Lotus B.M.C. ..	58.6	76.18
Clubman's Formula Sports Cars — 1001 c.c. to 1500 c.c.				
D. L. WRAGG ..	1498	U.2.-Ford ..	57.0	78.32

YOU TOO CAN DRIVE AT 70 plus—

on one of Britain's leading race-tracks



BY JOINING THE
Brands Hatch Motor Club
Snetterton Motor Racing Club
Mallory Park Motor Club



For 2 or 3 guineas a year you can experience something new in Motor Club enjoyment.

CONSIDER

THESE BENEFITS

DRIVE ON A RACE TRACK

When you join a circuit car club you will be sent three tickets each entitling you to 20 laps driving your own silenced road car round the Brands Hatch, Snetterton and Mallory Park race tracks. All three circuits are open for this purpose on Tuesday and Thursday evenings each week during the summer, and on certain weekend days throughout the year. Each track is properly supervised and now has permanent catering services. Members are covered automatically by legal liability insurance and low-cost personal accident insurance is available as an optional extra.

ENJOY A CIRCUIT

Close to the paddock at Brands Hatch and Snetterton, and to the hairpin at Mallory Park, members have their own modern-style motoring pubs and clubhouse. They are open most evenings, weekdays, weekends, and on all practice and race days. Apart from

CLUBHOUSE

their attractive bars, set against a background of motor badges and paintings, the clubhouses are also equipped with music and amusements. They are also the scene of film shows, dances and cocktail parties.

JOIN TODAY

Display a proud emblem

Each circuit car club has its own distinctive emblem which is reproduced on transfers, car and lapel badges, and on club ties.

Subscription Rates

For 3 gns. a year (2 gns. if a B.R.S.C.C. member) you can enjoy all the advantages described in this leaflet. (Track membership.) For 2 gns. a year you can enjoy all the advantages described in this leaflet, except drive on the tracks and skid roads. (Social membership.)

DRIVE ON A SKID ROAD

You also receive three more tickets, each entitling you to a weekend practice session on the Brands Hatch skid road, built specially for the High Performance Course of the British School of Motoring. In your own car you can spin safely on the special mastic surface through 360 degrees from only 20 m.p.h.

MEMBER OF ONE-MEMBER OF THREE

Membership of any one circuit car club allows you and up to three guests to use the clubhouses at Mallory Park, Snetterton and Brands Hatch. Similarly, members of any one circuit car club are also automatically

members of the other two, and are entitled to exchange skid-road and race-track tickets (when applicable), to use the other facilities at concession rates, and to enjoy full clubhouse privileges.

How to join

Complete the application form below and send it, with our remittance to:—
The Secretary: Brands Hatch Motor Club, c/o Brands Hatch Circuit Ltd., Fawkham, Dartford, Kent. Tel: West Ash 331
The Secretary: Mallory Park Motor Club, c/o Mallory Park Circuit Ltd., Kirkby Mallory, Leicestershire. Tel: Earl Shilton 3306
The Secretary: Snetterton Motor Racing Club, c/o Snetterton Circuit Ltd., Norwich, Norfolk. NOR 10.X. Tel: Quidenham 303
Your membership card and further details concerning track use and season brochures will be forwarded immediately.

DRIVE ON A KART TRACK

As a circuit car club member you will be able to use, at each circuit, on prior notice, a go-kart, a kart amusement track, and a crash helmet for only 7s. 6d. per 10-lap session instead of the normal charge of 10s. If you have your own kart you will be able to take part in races on the 1.24 mile motor race circuit at Brands.

YOUR OWN MAGAZINE

Through the post every month you will receive a copy of "Sportscar" (post-free value 30s. a year). It will come to you not as a mere club journal, but as a lively illustrated review, full of race reports, road-tests and motor

sporting personalities—all in pictures. "Sportscar" is edited by John Blunsden and Darryl Reach, part of the team that produces its lively companion journal "Motor Racing".

CHEAPER SPECTATING

You can also purchase, at a guinea less than the public rates, low-cost car race spectator season brochures for yourself, one other male, and up to four ladies and children, at one or all of the three circuits involved. These admit your car to any public park and all brooch holders to the paddock and any normal viewing area. At Brands Hatch a season brooch costs 4 gns. for adult males, and 3 gns. only for ladies and children, compared with individual admission tickets totalling more than £16 in yearly cost. At Mallory Park and Snetterton the brochures cost 3 gns. for males and 2 gns. for ladies and children for over £9 normal value.

As a member of a circuit car club you can again extract the maximum in speed and roadholding from your car. At Brands, Mallory and Snetterton you can enjoy real performance on roadways designed to bring out the best in driving skill and engineer-

ing. And you can do so within safety barriers, wide run-offs, and without the risk of oncoming traffic. And afterwards—you can relax in the clubhouse with people with interests just like yours.

DON'T MISS THESE FACILITIES. MAKE LEADING MOTOR YOUR SOCIAL

UNIQUE BRITAIN'S RACE-TRACKS RENDEZVOUS

FULL MEMBERSHIP APPLICATION FORM

Dear Sir,
Please enrol me as a member of the: Brands Hatch Motor Club, The Snetterton Motor Racing Club, The Mallory Park Motor Club. Please also send me the following:—

..... ties (green, blue, maroon) at 17s. 6d. each	...	£	s.	d.
..... lapel badges (pin) at 3s. 6d. each	...			
..... car badges at £1 5s. each	...			
..... 3 in. transfers at 1s. each	...			
I also enclose:—				
3 gns. for twelve months track membership	...			
2 gns. for twelve months social membership	...			

TOTAL £ _____

(Delete the inapplicable.)

Please make your cheque payable to the club of your choice.

NAME

ADDRESS

TELEPHONE NUMBER

THE 750 MOTOR CLUB LTD.

The Club was formed in 1939 to encourage owners of cars with engines of 750 c.c. to participate in motor sporting activities. This means we are very Austin Seven conscious but we have somewhat expanded the original conception of the Club, and now the owners of any make of car are welcome, together with non car owners with an enthusiasm for the sport. We sponsor sports car racing under the inexpensive 750 and 1172 Formulae and annually hold the National Six Hour Relay Race and many other race meetings at all the major circuits. Hillclimbs, rallies, Trials, Autocross and driving tests are also organised in their season and invitations are accepted from all the major Motoring Clubs for similar events. The Social side is well covered by a network of more than 20 Centres and Groups from Dundee to Truro, who all hold monthly meetings and also run their own local programmes.

The entry fee is 10/- and the annual subscription £2, from March 1st to February 28th. Members joining in January or February will become members immediately for the following year at no extra cost for the two months. Car, lapel, blazer badges, transfers, ties and many other items are available from the Club Secretary at reasonable prices. The Club operates a very attractive insurance scheme for all members over 21 years of age, after one year's membership. The premium rates are such that in most cases there is an annual saving of more than the outlay on becoming a member.

Why not ask the General Secretary for further details? The address is:

Colin Peck,

"Dancers End", St. Winifreds Road,
Biggin Hill, Kent.

750 M.C. RACE MEETING CALENDAR 1966

Major Speed Events Only

May	1	Blandford Hill Climb
	7	750 Silverstone
June	4	Eight Clubs, Silverstone
	4	Castle Combe Race Meeting
	12	Lydden Hill Race Meeting
July	3	SNETTERTON 750
	3	Lydden Hill Sprint
	18	Silverstone Race Meeting
	23	Castle Combe Race Meeting
Aug.	6	Birkett Six Hour Relay Race, Silverstone
	13	Oulton Park Race Meeting
Sept.	18	Blandford Hill Climb
Oct.	8/9	Wiscombe Park Hill Climb
	13	Clubmans Championship, Silverstone
	16	Castle Combe Sprint Meeting

BRANDS HATCH FIXTURES 1966

Date	EVENT	Races	Charges
24 April	BARC Clubmans Car Races	FL/F3/S/GT/T	7/6d.A, CF, 2/6d.Pr, Rovers
1 May	Camathias Memorial National Motor Cycle Races	All Classes	10s.A, CF, 10s.S, 2/6d.Pr
8 May	*BRSCC ILFORD 500-MILE GT RACE	GT/T/F3	15s.A, CF, 2/6d.Pr, Rovers
15 May	INTERNATIONAL KART RACES	1 Sport, all 4s.	7/6d.A, CF, PF, SF
22 May	Brandmaster Trophy Stock Car Races A.C. Owners Club Sprint	All Classes S/GT/T	7/6d.A, 2/6d.C, 5s.S, 2/6d.Pr 3/6d.A, CF, Rovers
29 May	BRSCC £500 Leston Cup Car Races	F3/S/GT/T	10s.A, 2/6d.C, 10s.S, 10s.P, 2/6d.Pr
30 May	**"EVENING NEWS" INTERNATIONAL MOTOR CYCLE RACES	All Classes	10s.A, 2/6d.C, 10s.S, 10s.P, 2/6d.Pr
5 June	National Kart Racing	1 Sport, all 4s.	7/6A, CF, PF, SF
11 June	Clubmans Motor Cycle Races	All Classes	7/6d.A, CF, 2/6d.Pr, Rovers
12 June	Thames Estuary C.C. & Mid-Surrey A.C. Clubmans Car Races	FL/F3/S/GT/T	7/6d.A, CF, 2/6d.Pr, Rovers
19 June	London Motor Club Radio London Car Races	FL/F3/S/GT/T	10s.A, 2/6d.C, 2/6d.Pr, Rovers
26 June	*INTERNATIONAL GRAND PRIX D'ENDURANCE 500-MILE PRODUCTION MOTOR CYCLE RACE		10s.A, CF, 2/6d.Pr, Rovers
3 July	BRSCC Clubmans Car Races	FL/F3/S/GT/T	7/6d.A, CF, 2/6d.Pr, Rovers
10 July	MG Car Club Clubmans Races	FL/F3/S/GT/T	7/6d.A, CF, 2/6d.Pr, Rovers
16 July	*"RAC BRITISH GRAND PRIX sponsored by the "Daily Mail"	FL/SR/T	20s.A, 5s.C, S: 40s., 30s., 20s., 20s.P, PF
17 July	National Kart Races Jaguar Drivers Club & BP Auto Club Sprint	1 Sport, all 4s. S/GT/T	7/6d.A, CF, SF, PF 3/6d.A, CF, Rovers
24 July	Stars of Tomorrow Novices Motor Cycle Races	All Classes	7/6d.A, CF, 2/6d.Pr, Rovers
31 July	World Championships Stock Car Races BARC S.E. Centre Sprint	All Classes S/GT/T	7/6d.A, 2/6d.C, 5s.S, 2/6d.Pr 3/6d.A, CF, Rovers
7 Aug.	BRSCC St. John Trophy Car Races	FL/F3/S/GT/T	10s.A, 2/6d.C, 10s.S, 10s.P, 2/6d.Pr
14 Aug.	**"EVENING NEWS" INTERNATIONAL "HUTCH-INSON 100" MOTOR CYCLE RACES	All Classes	10s.A, 2/6d.C, 10s.S, 10s.P, 2/6d.Pr
21 Aug.	BARC Clubmans Race Meeting	S/GT/T	7/6d.A, CF, 2/6d.Pr, Rovers
28 Aug.	Race of Stars Stock Car Races Surrey Sporting Motor Club/OAC Sprint	All Classes S/GT/T	7/6d.A, 2/6d.C, 5s.S, 2/6d.Pr 3/6d.A, CF, Rovers
29 Aug.	*BRSCC GUARDS INTERNATIONAL RACES	SR/F3/S/T/Hist.	15s.A, 5s.C, 20s.S, 10s.P, 2/6d.Pr
3 Sept.	} British Kart Championships	All Classes	7/6d.A, CF, SF, 5s.P, 2/6d.Pr
4 Sept.			
11 Sept.	INTERNATIONAL 250 cc TROPHEE DES NATIONS sponsored by the "Daily Sketch"	All Classes	10s.A, 2/6d.C, 2/6d.Pr, Rovers
17 Sept.	Stars of Tomorrow Clubmans Motor Cycle Races	All Classes	7/6d.A, CF, 2/6d.Pr, Rovers
18 Sept.	Sevenoaks & DMC Clubmans Races	FL/F3/S/GT/T	7/6d.A, CF, 2/6d.Pr, Rovers
25 Sept.	King of the Stocks Car Races Herts A.A.C. Sprint	All Classes S/GT/T	7/6d.A, 2/6d.C, 5s.S, 2/6d.Pr 3/6d.A, CF, Rovers
2 Oct.	*INTERNATIONAL RAC F.3 EUROPEAN CUP RACES	F3 Int (S/GT/T-Club)	10s.A, 2/6d.C, 10s.S, 10s.P, 2/6d.Pr
9 Oct.	**"EVENING NEWS" INTERNATIONAL MOTOR CYCLE RACE OF THE SOUTH	All Classes	10s.A, 2/6d.C, 10s.S, 10s.P, 2/6d.Pr
16 Oct.	Maidstone & MKMC Dartford Cup Car Races	FL/F3/S/GT/T	10s.A, 2/6d.C, 2/6d.Pr, Rovers
23 Oct.	MG Car Club Sprint	S/GT/T	3/6d.A, CF, Rovers
29 Oct.	Clubmans Motor Cycle Races	All Classes	7/6d.A, CF, 2/6d.Pr, Rovers
30 Oct.	BARC Motor Show Trophy Car Races	FL/F3/S/GT/T	10s.A, 2/6d.C, 2/6d.Pr, Rovers
6 Nov.	East Surrey M.C. Sprint	S/GT/T	3/6d.A, CF, Rovers
13 Nov.	National Kart Races	1 Sport, all 4s.	7/6d.A, CF, SF, PF
20 Nov.	INTERNATIONAL SCRAMBLE OF THE YEAR	All Classes	10s.A, 2/6d.C, 2/6d.Pr, Rovers
27 Nov.	London Motor Club November Cup Car Races	FL/F3/S/GT/T	10s.A, 2/6d.C, 2/6d.Pr, Rovers
4 Dec.	Surrey Sporting M.C. Sprint	S/GT/T	3/6d.A, CF, Rovers
11 Dec.	Volkswagen O.C. Sprint	S/GT/T	3/6d.A, CF, Rovers
18 Dec.	Lambretta O.C. Economy Run	Scoters	No Charge
26 Dec.	BRSCC Boxing Day Car Races	FL/F3/S/GT/T	10s.A, 2/6d.C, 10s.S, 10s.P, 2/6d.Pr

* On the 2.65 Grand Prix Circuit

KEY: A — Adults; C — Children; CF — Children Free; S — Stands; P — Paddock; Pr — Programme;
SF — Stands Free; PF — Programme Free.
Rovers — Inclusive of entry to stands and paddock.

PARKING FREE AT ALL MEETINGS

All the above information is given in good faith at the time of publication

15 16 14
12 10 1
8 17 18
21 24 2
10

RACE ONE

1172 FORMULA RACE

START : 2.00 p.m. 10 LAP SCRATCH RACE

No.	Entrant and driver	Car	c.c.	Club
1	Michael Wilds	DRW	1172	750
2	Mike Bott	U.2.	1172	"
3	H. W. Cooper	Aquilla/Ford	1172	"
4	Gerry Davis	Lotus 7	1172	"
5	Gordon Berry	Lotus 7	1172	"
6	R. H. Sussams	Pegasus 1	997	"
7	John Corbyn	Lotus 7	1172	"
8	Royston Hewetson	Lotus 6	1172	"
9	Ian Wells	Lotus 7	1172	"
10	G. D. Edwards	Rejo Mk. 3	1172	"
11	N. F. J. Manning	Lotus 7	1172	"
12	P. D. Loakman	Rejo	1172	"
14	A. K. Day	ADS	1172	"
15	John Lancaster	Orva 3	1172	"
16	Bob Light	Jenoby	1000	"
17	W. H. Cowling	Terrier	1172	"
18	A. Butcher	U.2.	1172	"
19	M. F. Cadby	Dino 3	1172	"
20	Simon Mostyn	Elva	1172	"
21	Robert Littler	Lotus	1172	"
Reserves :				
22	W. J. Gadd	Lotus 7	1200	"
23	John Sutton	Rejo	1172	"
24	A. Spiro	Lotus 7	1172	"
25	R. T. Lancaster	Special	1172	"
46	W. Bowden	Goodwin Special	1172	"

RESULTS :

1st..... 2nd..... 3rd.....
 Winner's Time..... Speed..... m.p.h.
 Fastest Lap : Car No. Time..... Speed..... m.p.h.

DRIVE A SPORTS CAR IN THE COMFORT OF YOUR OWN HOME !

It's easy if you read

miniature auto every month

Miniature Auto is as lively as a racing car itself, and is devoted to all aspects of the fast-growing model motoring hobby.

Every issue contains hints, tips and practical do-it-yourself articles. These cover building your own model cars, slot racing, kit building, converting and customising, military modelling and collecting, plus up-to-date news and reviews of latest products.

Order a regular copy from your news-agent, price 2s. 6d. monthly, or take out a postal subscription, price 36s. per year, from The Pritchard Patent Product Company Limited, Pecoway, Seaton, Devon.

Copies of the latest issue can be bought TODAY either from our salesmen round the circuit, or from 'The Bookman' (Chater & Scott) Shop

29 35 30 31
26 27 38
121 34

RACE TWO

FORMULA MINI SEVEN

10 LAP SCRATCH RACE

No.	Entrant and driver	Car	c.c.	Club
26	R. F. Cottrill	Austin Mini	840	750
27	R. T. Cox	Austin Mini	848	S.S.M.C.
28	Oselli Engineering (Dvr.: G. Gilkes)	Morris Mini	848	750
29	R. J. Fox	Austin Mini	848	B.R. & S.C.C.
30	R. D. Bromley	Austin Mini	850	750
31	G. A. Line	Austin Mini	848	750
32	Aurelli Accessories (Dvr.: C. H. Stewart)	Austin Mini	848	750
33	Ian Cook	Austin Mini	848	Mini Seven M.C
34	V. L. J. Church	Morris Mini	848	Mini Seven M.C
35	E. R. Bourne	Morris Mini	848	B.R. & S.C.C.
36	John Lyon	Aley Mini	850	750
37	T. J. Martin (Dvr. Entrant or M. Walker)	Austin Mini	848	750
38	B. Balcombe	Austin Mini	848	S. & D.M.C.

RESULTS :

1st..... 2nd..... 3rd.....
 Winner's Time..... Speed..... m.p.h.
 Fastest Lap : Car No. Time..... Speed..... m.p.h.

HAMMONDS & OAKWOOD (GARAGES) LTD.,
 349, CROFTON ROAD, FARNBOROUGH, KENT. Tel.: 55678

"LOTUS" DISTRIBUTORS IN KENT & SUSSEX
 OFFER YOU

A DEMONSTRATION DAY AT

BRANDS HATCH

25th April 1966

Buckland Garage (Dover) Ltd
 London Road, Dover, Kent
 Kent Agents
 Tel.: Dover 1898

Broad Oak Garage
 Heathfield, Sussex
 Sussex Agents
 Contact Bernard Hayes
 at Heathfield 1898

Boughton Service Station
 Boughton Monchelsea
 Maidstone, Kent
 Kent Agents
 Tel: Maidstone 43228

Send for further details to
 MIKE HEWITT
 of
 HAMMONDS & OAKWOOD
 at the above address

Please send details of Brands Hatch April 25th to:
 NAME
 ADDRESS
 Telephone No.

RACE THREE

750 FORMULA RACE

10 LAP SCRATCH RACE

No.	Entrant and driver	Car	c.c.	Club
50	Peter Danby	DEB Mk. 2	598	750
51	Don Maynard	Austin	648	"
52	John Ward	Austin	748	"
53	Richard de la Rue	Complexity	750	"
54	Richard Hartle	Tristesse	600	"
55	Peter Monk	Nova Reliant	600	"
56	Bryan J. Clayton	Vitesse 2R	600	"
57	Robin Hartle	Special	600	"
58	J. D. Harper	Special	747	"
59	N. J. Beck	Special	747	"
60	I. A. Bates	Special	747	"
61	J. Leah	Special	747	"
62	C. W. Drake	R & D 750	750	"
63	J. M. Cotton	Finesse	750	"
64	F. R. Smyth	Warren Austin	750	"
65	P. E. Coombs	Austin Special	750	"
66	M. E. How	750 Special	750	"
67	T. G. Gloster	UCI Austin	750	"
68	M. R. Kirkby	750 Special	750	"
69	D. J. Hammond	Miaco	750	"
Reserves :				
70	R. K. Cuttill	Special	750	"
71	J. Bures	Special	750	"
72	M. Wilding	Special	750	"
73	P. A. Thompson	Special	750	"

RESULTS :

1st 56 2nd 60 3rd 52 68 61 73
 Winner's Time 12.82 Speed 61.3 m.p.h.
 Fastest Lap : Car No. 56 Time 1.11.0 Speed 62.8 m.p.h.

RACE FOUR

SPORTS & G.T. CARS

10 LAP SCRATCH RACE
(In Two Classes)

No.	Entrant and driver	Car	c.c.	Club
Class B — Up to 1400 c.c.				
74	J. R. Axon	Lotus XI	1098	750
75	I. J. Alexander	Diva	1098	B.R. & S.C.C.
76	B. Bishop	Sprite	1098	S. & D.M.C.
77	M. Lingard	Sprite	1098	M.G.C.C.
78	C. Garnham	Pegasus	997	750
79	B. G. Nelson	Lotus 7	948	750
80	A. Stuart	Lotus	1216	B.R. & S.C.C.
81	S. A. Milne	D.C.M.	997	750
82	W. J. Shaw	M.G.	1098	M.G.C.C.
83	A. Day			
	(Dvr.: B. J. Morris)	A.D.S.	1172	750
84	J. W. Streetly	Sprite	1148	750
Class A — Over 1400 c.c.				
85	Miss Wendy Paget	M.G. B.	1798	S.S.M.C.
86	G. Dixon	Lotus Ford 15	1594	750
87	R. B. Willis-Owen	Elva Courier	1558	S.S.M.C.
88	A. T. Sandars	Lotus 7	1498	750
89	D. Enstone	M.G. B.	1798	N.S.C.C.
90	G. V. Gould			
	(Dvr.: Entrant or J. A. Gould)	Ginetta G4	1498	B.A.R.C.
91	M. R. Mosley	U.2.	1498	B.R. & S.C.C.
92	M. H. Evans	M.G. B.	1798	B.A.R.C.
93	D. Andree			
	(Dvr.: H. Fernando)	Diva G.T.	1650	B.R. & S.C.C.
Reserves :				
94	J. D. Lindsay	Terrier	997	B.A.R.C.
95	Rokstarr Motors Ltd.			
	(Dvr.: K. J. Starr)	U.2.	999	B.R. & S.C.C.
96	Patricia Allen	A.H. Sebring Sprite	948	Austin Healey
97	G. Nigogosian	M.G. Midget Le Mans	1148	B.R. & S.C.C.
164	D. Tullett	Lotus	1100	B.A.R.C.
162	K. Astrop	Ginetta G4	1340	T.E.A.C.
163	David Plumstead			
	(Dvr.: G. L. Capel)	Lotus Buick	3554	B.R. & S.C.C.

RESULTS:

Class A 1st 88 2nd 161 10.7.0 10.7.2
 Class B 1st..... 2nd..... 163 75 10.9.0
 Winner's Time 10.1 Speed 73.81 m.p.h.
 Fastest Lap : Car No. 163/80 Time 59.2 Speed 79.4 m.p.h.
59.6 74.94

WHEN CHANGING FROM TWO TO FOUR WHEELS COME TO US FOR YOUR **NEW IMP** AND ALL OTHER ROOTES PRODUCTS
 IMP TUNING KITS NOW AVAILABLE FROM US
SPRINGETT'S SERVICE STATION
 (Proprietors: Springetts Garage Ltd.)
 62, MAIDSTONE ROAD, PADDOCK WOOD, KENT.
 TELEPHONE: 450

RACE FIVE

MONOPOSTO REGISTER FORMULA

10 LAP SCRATCH RACE

No.	Entrant and driver	Car	c.c.	Club
98	R. K. Somerton ...	Merlyn ...	997	750/M.R.F.
3	H. W. Cooper ...	Aquila/Ford ...	1172	Class B
99	R Hewetson (Dvr.: J. Tizard)	Lotus 6 ...	1172	Class B
100	D. A. S. Colvin ...	Lotus ...	1498	"
101	L. F. Holland ...	Mono ...	997	"
102	G. W. Dibben ...	Lotus 18 ...	997	"
103	M. J. Ledbrook ...	M.J.L. Mk. A ...	996	"
104	R. Terry ...	Terrier Ford ...	1394	"
105	A. Lovell-Spencer ...	Gemini Mk. 5 ...	997	"
106	D. C. White ...	Merlyn Mk. 3 ...	998	"
107	P. Hancock ...	Project X ...	1098	"
108	J. F. Grant ...	Thistle ...	997	"
109	S. P. Rolt ...	U.2. ...	1498	"
110	G. J. Rae ...	Olivet ...	1172	Class B
111	T. Moore ...	Elva-D.K.W. ...	1089	"
112	J. A. Derisley ...	Lotus ...	1500	"
113	I. S. Stronach ... (Dvr.: L. E. Wickham)	Concorde-Moro ...	1496	"
114	F. J. Tiedeman ...	Deep Sanderson ...	1172	Class B
115	J. R. Wood ...	Cooper ...	1098	"

RESULTS :

1st..... 2nd..... 3rd.....

Winner's Time..... Speed.....m.p.h.

Fastest Lap : Car No. Time..... Speed.....m.p.h.

SOUTH BANK PARKING

For 57 of this years 65 Brands Hatch meetings you can, without extra charge, park your car on the South Bank slope.

For the R.A.C. British Grand Prix, all scrambles and Meetings at Easter and August Monday this area will be for pedestrians only. This will assist your speedy entry and exit to and from the circuit.

RACE SIX

SALOON CAR RACE

10 LAP SCRATCH RACE

(In Two Classes)

No.	Entrant and driver	Car	c.c.	Club
Class B — Up to 1500 c.c.				
26	R. F. Cottrill	Austin Mini ...	840	750
121	B. Cox ...	Morris Cooper ...	1293	B.R. & S.C.C.
122	A. J. Davies ...	Austin Cooper ...	1275	S.S.M.C.
124	A. Hazlewood ...	Morris ...	1293	B.A.R.C.
125	P. Anderson (Dvr. Entrant or T. Sims)	Austin Mini ...	1293	B.R. & S.C.C.
126	M. J. Goodrich (Dvr.: Entrant or A. Woosnam-Mills)	Morris Mini ...	1293	B.R. & S.C.C.
127	Martin Raymond ...	Austin Cooper ...	997	M.G.C.C.
128	Colin Hawker ...	Ford Anglia ...	1221	B.R. & S.C.C.
129	Terry Harmer ...	Morris Cooper ...	998	B.R. & S.C.C.
139	R. J. Ellice ...	Mini Cooper ...	999	B.R. & S.C.C.
Class A — Over 1500 c.c.				
130	J. Watkins	Ford Lotus Cortina	1558	B.R. & S.C.C.
131	G. T. Hughes ...	Ford Lotus Cortina	1558	B.R. & S.C.C.
132	P. R. Gleed ...	Ford Lotus Cortina	1558	B.R. & S.C.C.
133	B. Newton ...	Ford Lotus Cortina	1650	B.R. & S.C.C.
134	Tony Roberts	Ford Anglia ...	1558	B.R. & S.C.C.
135	R. Sandars ...	Ford Anglia ...	1650	B.A.R.C.
136	Bill Camp ...	Ford Anglia ...	1650	750
137	J. D. Mitchell ...	Vauxhall Viva Ford	1500	B.A.R.C.
138	Anthony Amato Car Sales (Dvr.: Gerry Amato)	Ford Anglia ...	1650	B.R. & S.C.C.
143	R. Taylor ...	Ford Lotus Anglia	1598	Mini Seven
Reserves :				
140	D. S. Jones ...	Mini Cooper ...	1275	B.R. & S.C.C.
141	D. Bickell ...	Mini Cooper ...	1275	750
142	R. Watkins ...	Morris Cooper ...	970	S. & D.M.C.
123	R. A. Selby ...	Ford ...	1498	B.R. & S.C.C.

RESULTS :

Class A 1st..... 2nd.....

Class B 1st..... 2nd.....

Winner's Time..... Speed.....m.p.h.

Fastest Lap : Car No. Time..... Speed.....m.p.h.

RACE SEVEN

SINGLE SEATER RACING CARS

10 LAP SCRATCH RACE

No.	Entrant and driver	Car	c.c.	Club
100	D. A. S. Colvin	Lotus	1498	750
105	A. Lovell Spencer	Gemini Mk. 5	997	750
102	B. G. Lapham	Murlap	1098	750
144	P. Tomlin	Lola	1594	B.R. & S.C.C.
145	A. O. C. Moore	Lotus 41	997	B.A.R.C.
146	B. Newton	Brabham	997	B.R. & S.C.C.
147	C. Lambert	Brabham	998	B.A.R.C.
148	A. J. Huggett	Brabham	1000	B.R. & S.C.C.
149	M. D. Cowburn	Merlyn Mk. 3	998	750
150	I. S. Stronach	Concorde-Mono	1496	750
151	P. W. Welstead	Lotus 41	997	S & D.M.C.
152	M. Keens	Brabham	997	B.R. & S.C.C.
153	G. E. Murphy	Murlap	1498	750
154	Pearl Petroleum Racing (Dvr.: K. H. Luscombe-Whyte)	Lotus 31	997	B.A.R.C.

RESULTS :

1st..... 2nd..... 3rd.....
 Winner's Time..... Speed.....m.p.h.
 Fastest Lap: Car No. Time..... Speed.....m.p.h.

BOOK NOW for the Next Car Meeting



KINGSLEY-WINDSOR HOTEL
CAR RACES
SUNDAY
APRIL 24
at 2.15 p.m.

TO: BOOKING OFFICE, BRANDS HATCH CIRCUIT LTD. FAWKHAM, KENT.

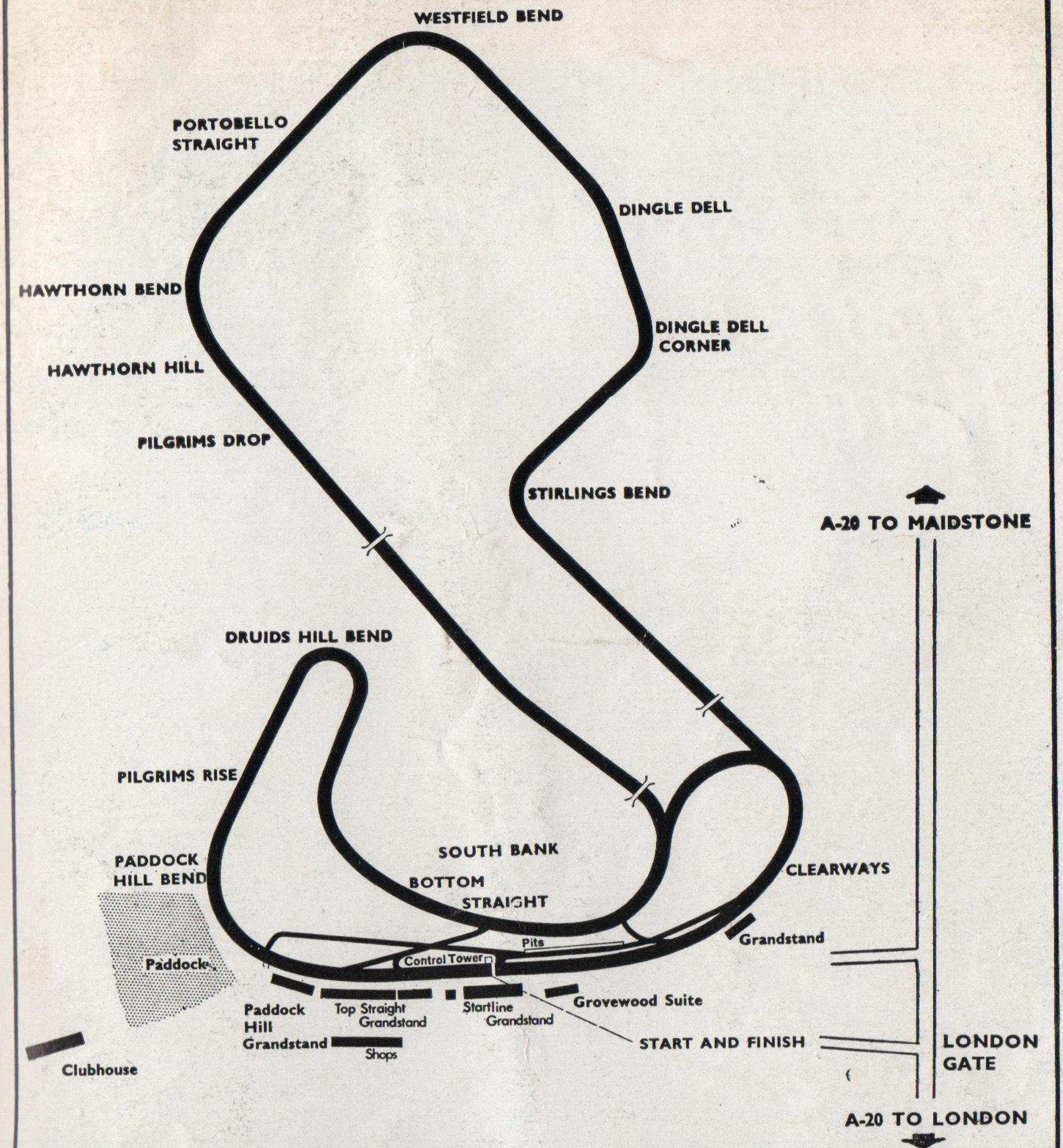
Please send me 7/6 Rover tickets covering entry to all public enclosures, grandstands and paddock for the B.A.R.C KINGSLEY-WINDSOR HOTEL CAR RACES on April 24th 1966. CHILDREN FREE

PARKING FREE

I enclose Cheque/P.O./Cash for £. s. d.

NAME.....

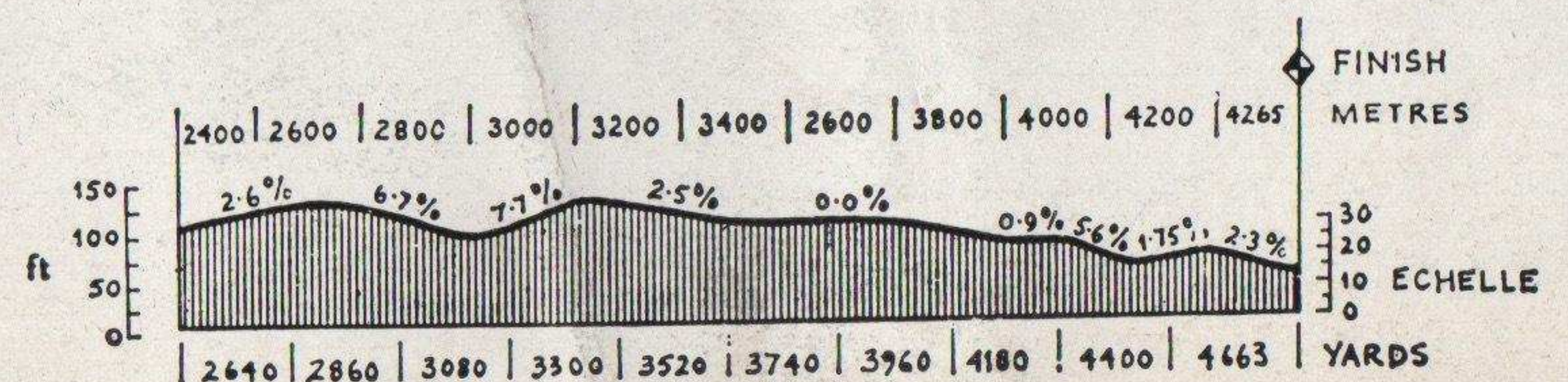
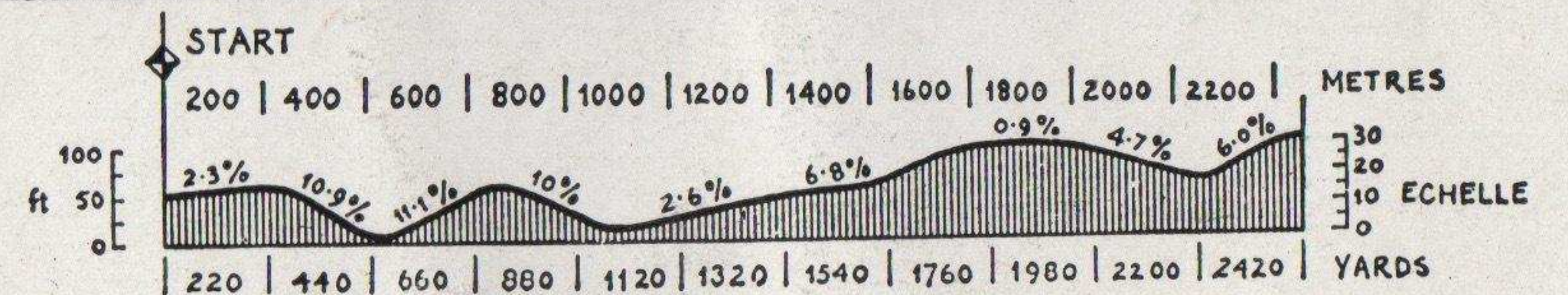
ADDRESS.....



BRANDS HATCH CIRCUIT

GRAND PRIX CIRCUIT 2.65 miles

CLUB CIRCUIT 1.24 miles



THE SHORT 1.24 MILE CIRCUIT ONLY IS IN USE FOR THIS MEETING

*Getaway
Starts
Here!*

