

# CRYSTAL PALACE

NATIONAL  
CAR RACE MEETING

Organized by the  
BRITISH AUTOMOBILE RACING CLUB  
SATURDAY, 19th JUNE, 1954



OFFICIAL PROGRAMME 1/-

# The Motor

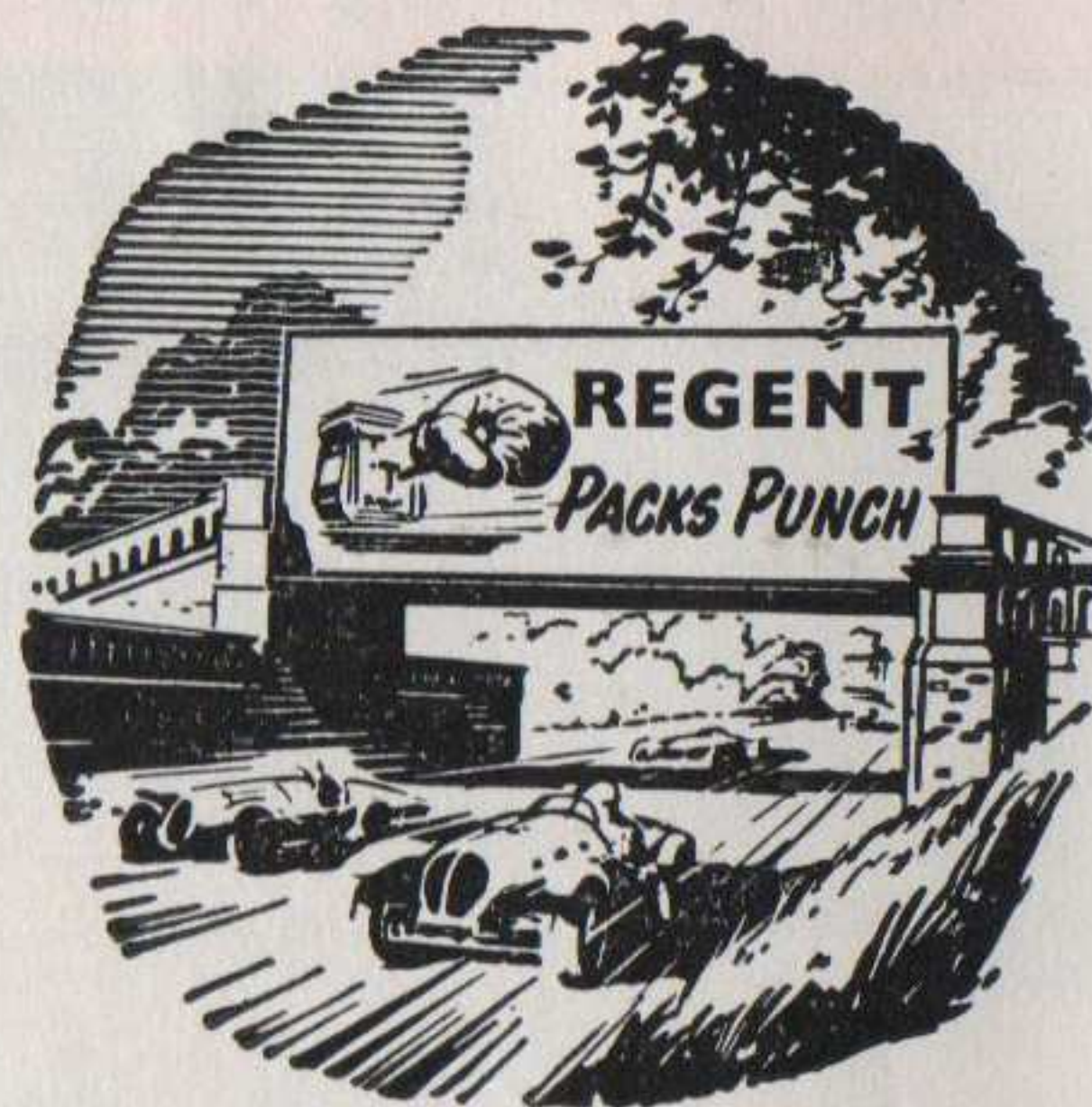
WEDNESDAYS 1/-

*For the Best Reports*

*and Action Pictures*



Arrange to  
meet your  
friends at  
**THE REGENT  
BRIDGE**



**REGENT  
PACKS PUNCH**  
*Plus VOLATANE CONTROL*

\* On the journey home fill up with Regent  
T.T. and prove for yourself that it gives  
the liveliest performance of *any* petrol.

NATIONAL CAR RACE MEETING  
**Crystal Palace**

SATURDAY, 19th JUNE, 1954



PROGRAMME OF MOTOR RACING PRESENTED FOR THE

**London County Council**

by the

**British Automobile Racing Club**

*The Meeting is held under the International Sporting Code of the Federation Internationale de l'Automobile (hereinafter called the F.I.A.), the General Competition Rules of the Royal Automobile Club, the Competition Rules (1954) of the British Automobile Racing Club, Ltd., and such Supplementary Regulations and Instructions as the Club may issue for the Meeting. R.A.C. Permit No. 0/94.*

**CONTENTS OF THIS PROGRAMME**

	<i>Page</i>
NOTICES AND ACKNOWLEDGMENTS ... ..	2
OFFICIALS ... ..	3
PROGRAMME OF EVENTS ... ..	4
AWARDS ... ..	4
TO-DAY'S COMPETITORS ... ..	6 and 7
EVENT 1 ... ..	9
EVENT 2 ... ..	11
MAP OF THE CIRCUIT ... ..	12 and 13
FORTHCOMING EVENTS AT CRYSTAL PALACE ... ..	14
EVENT 3 ... ..	15
EVENT 4 ... ..	17
CRYSTAL PALACE RECORDS ... ..	18
EVENT 5 ... ..	19
EVENT 6 ... ..	21
LAP SPEED TABLE... ..	22
EVENT 7 ... ..	23
MAP OF CRYSTAL PALACE GROUND, PUBLIC TRANSPORT FACILITIES ... ..	24
FLAGS ... ..	24

L. A. HUDDART, Chief Officer of the Parks Department, London County Council.



# NOTICES

**MOTOR RACING IS DANGEROUS.** Admission to the track is upon the condition that the promoters, organizers and those conducting the Meeting and all persons having any connexion therewith for the purpose of the Meeting, including the owners of Crystal Palace and the drivers or riders and owners of vehicles and passengers in the vehicles taking part in the Meeting, are relieved of all liability (if any) arising out of accidents causing damage, loss or personal injury to spectators.

**SPECTATORS** are requested to disperse in a quiet and orderly manner.

**DOGS.** In the interests of safety, dogs are not admitted.

**PROGRAMME COPYRIGHT.** This programme, including the list of competitors and their racing numbers, is copyright.

**THE LONDON COUNTY COUNCIL** reserves the right to postpone, abandon, or cancel the race meeting or any part thereof.

**THE PROMOTERS** accept entries and driver nominations in good faith, but have no control over circumstances affecting non-starters. Every effort is made to adhere to the printed programme of competitors. The promoters, however, cannot accept responsibility for the failure of any driver or car to appear.

---

## Acknowledgments

**ALL FIRE PRECAUTIONS AND FIRE FIGHTING SERVICES BY THE PYRENE COMPANY LTD.**

**BREAKDOWN SERVICE** by Cornwall Lodge Garage Ltd., 109 Anerley Road, S.E.20; L. F. Ward Ltd., Grange Road Garage, Thornton Heath, Surrey.

**CATERING** by the Restaurants and Catering Department of the London County Council.

**FIRST AID SERVICES** by St. John Ambulance Brigade.

**PADDOCK AND START LINE WARNING SIGNALS** by Joseph Lucas Ltd.

**PUBLIC ADDRESS** by Tannoy Products Ltd.

**SCOREBOARD AND CONTROL MESSENGERS** by members of the 23rd Beckenham Scout Group.

**DUPLICATOR AND OFFICE EQUIPMENT** by Roneo Ltd., 17 Southampton Row, London, W.C.1.

# Officials

## STEWARDS OF THE MEETING

The Marquis Camden (representing the R.A.C.)

Professor A. M. Low, D.Sc., A.C.G.I.

H. R. Godfrey, M.I.Mech.E.

E. C. Gordon England, F.R.Ae.S.

## JUDGES

Lord Essendon

J. Duncan Ferguson, F.C.A.

Stanley Sedgwick, A.C.A.

C. S. Watkinson

## CHIEF OBSERVER

J. Gordon Offord

## CHIEF MARSHAL

S. M. Lawry

## OBSERVERS AND ASSISTANTS

W. B. Allen

J. Benjafield

D. V. Brown

Robin Brown

D. L. Donne

W. G. Fowler

A. I. Geikie-Cobb

E. J. Kehoe

P. B. Merritt

G. J. Offord

T. J. Sawell

F. R. Turner

H. H. Wright

A. B. Baker

A. Bradley

R. E. Brown

N. C. Croucher

D. H. B. Dutfield

P. Franklin

D. R. Lloyd

P. J. Mercer

L. Rubery

L. Pelling

Lord Selsdon

M. F. Turner Bridger

A. J. H. Woodgates

## SCRUTINEERS

G. F. P. Sykes (Chief), W. B. Browning

F. C. Matthews, S. R. Proctor

## TIMEKEEPERS

A. L. Ebbelwhite

A. F. Faulkner

R. L. Clarke

## TIMEKEEPERS' ASSISTANTS

N. Freedman

G. Kenyon

F. Jones

P. Rowe

## SOUND CONSULTANT

Professor A. M. Low, D.Sc., A.C.G.I.

## CHIEF MEDICAL OFFICER

Dr. R. M. Penny

## MEDICAL OFFICERS

C. C. Cookson

D. F. Ellison-Nash

G. Hadfield

Dr. D. Paul

Dr. S. Drozdowski

Dr. J. N. Gray

Dr. K. B. McKay

Dr. St. G. Tucker

## PUBLIC ADDRESS

C. G. Meisl

James Tilling

## CHIEF COURSE MARSHAL

B. N. Wilmott

## CHIEF PADDOCK MARSHAL

D. H. Dunt

## START LINE, PADDOCK AND OTHER MARSHALS

F. M. B. Baker J. de Looper M. Ford

P. Ford R. Ford N. Freeman

W. J. Freeman F. Gander M. Gorringer

R. J. C. Hardy L. B. Holmes C. S. Hoile

G. D. Hornsby W. Matheson R. C. Oliver

E. N. Petch E. F. Reay, J. H. Renwick

P. A. Sturgess

## CLERK OF THE COURSE

H. J. Morgan

## SECRETARY OF THE MEETING

L. R. D. Cade

## PRESS

Facilities: S. C. Richards, D.S.C. (London County Council)

Race Information: Miss A. F. Hobbis (B.A.R.C.)

*British Automobile Racing Club Ltd., 55 Park Lane, London, W.1*



## Programme of Events

**THE CRYSTAL PALACE TROPHY RACE** for non-supercharged cars not exceeding 2500 c.c. engine capacity. In two heats and a final.

**Two Scratch Races** for non-supercharged racing cars not exceeding 500 c.c. engine capacity.

**THE CLUB TROPHY RACE** for non-supercharged racing cars not exceeding 2000 c.c. engine capacity and supercharged racing cars not exceeding 1500 c.c.

**A Scratch Race** for non-supercharged sports cars not exceeding 2000 c.c. engine capacity.

- Event 1 2.00 p.m. (10 laps)—Heat 1 of the Crystal Palace Trophy Race.  
,, 2 2.30 p.m. (10 laps)—Heat 2 of the Crystal Palace Trophy Race.  
,, 3 3.00 p.m. (10 laps)—500 c.c. Race (A).  
,, 4 3.30 p.m. (10 laps)—500 c.c. Race (B).  
,, 5 4.00 p.m. (10 laps)—The Club Trophy Race.  
,, 6 4.30 p.m. (10 laps)—Sports Car Race.  
,, 7 5.00 p.m. (10 laps)—Final of the Crystal Palace Trophy Race.

*At the finish of this race the Crystal Palace Trophy will be presented to the winner by Mr. A. J. Kemp, Chairman of the Parks Committee of the London County Council.*

## Awards

### CRYSTAL PALACE TROPHY RACE:

Each Heat: 1st—£25. 2nd—£15. 3rd—£10. 4th—£5.

Final: 1st—£50 and Trophy. 2nd—£20. 3rd—£10. 4th—£5.

**500 C.C. RACES:** 1st—£25. 2nd—£15. 3rd—£10. 4th—£5.

**CLUB TROPHY RACE:** 1st—£35. 2nd—£20. 3rd—£10. 4th—£5.

**SPORTS CAR RACE:** 1st—£25. 2nd—£15. 3rd—£10. 4th—£5.

### ON THE OPPOSITE PAGE

*Michael Keen in Bob Chase's 2-litre Cooper-Bristol two-seater at last September's International Meeting. He took the place of Alan Brown at the last minute and put up a tremendous show by winning the Norbury Trophy Race at 66.00 m.p.h.—well away from the rest of the field. He also took second place in the Anerley Trophy Race with a 1½-litre Kieft-MG.*

*West countryman Jack Westcott leads a large group of "500s" up Anerley Ramp with his Kieft shortly after the start of a Formula III race. This is a tricky corner to take on the first lap because the cars are "bunched" and it is difficult for the driver to take a pre-determined line. Westcott took third place in the recent Whitsun meeting at Davidstow in Cornwall and drives the same Kieft here to-day.*



Photograph: G. Goddard



Photograph: G. Goddard



# Today's Competitors

## RACING CARS OVER 500 c.c.

Asterisks denote Reserves in Event 5.

No.	Driver	Car	Entrant
1	Sir J. Boles or D. B. Beaman	Connaught	Sir J. Boles
2	R. Parnell	Ferrari	R. Parnell
3	C. D. Boulton	Connaught	C. D. Boulton
4	P. J. Collins	Connaught	R. R. C. Walker
5	W. J. Whitehouse	Connaught	W. J. Whitehouse
6	M. F. Young	Connaught	Roebuck Engineering Co.
7	R. Y. Nuckey	Cooper-Bristol	Ecurie Richmond
8	M. J. C. Keen or Alan Brown	Cooper-Bristol	R. J. Chase
9	J. A. Somervail or J. K. Hall	Cooper-Bristol	Border Reivers
10	R. F. Salvadori	Maserati	Gilby Engineering Co. Ltd.
11	P. R. Emery	Emeryson	Emeryson Cars
14	E. N. Whiteaway	H.W.M.	E. N. Whiteaway
15	J. H. Webb or J. E. G. Fairman	Turner	J. H. Webb
16	O. E. Simpson	Cooper	R. A. Searles
*17	G. Dunham	D.H.S.	C. G. H. Dunham
*18	L. Leston	Cooper-J.A.P.	L. Leston
*19	D. C. T. Bennett	Cooper	D. C. T. Bennett
20	H. Gould	Cooper-Bristol	H. Gould
21	T. T. Kyffin or D. Watts	Cooper-Bristol	T. T. Kyffin
22	A. G. Whitehead or E. W. Holt	E.R.A. s/c	A. G. Whitehead
23	J. A. Somervail	E.R.A. s/c	Border Reivers
24	A. W. Birrell	E.R.A. s/c	A. W. Birrell

## SPORTS CARS

(Reserves are marked with an asterisk)

No.	Driver	Car	Entrant
25	Alan Brown	Cooper	R. J. Chase
26	A. P. O. Rogers	Cooper-Bristol	A. P. O. Rogers
27	C. A. S. Brooks	Frazer-Nash	D. Hely
28	P. Scott-Russell	Frazer-Nash	P. Scott-Russell
29	D. J. Calvert	Kieft	D. J. Calvert
30	P. R. Crabb	Kieft	P. R. Crabb
31	D. E. Howard	H.W.M.-Alta	D. E. Howard
32	F. C. Davis	Tojeiro	F. C. Davis
33	R. F. Salvadori	Maserati	Gilby Engineering Co. Ltd.
34	A. C. B. Chapman	Lotus	Team Lotus
35	P. Gammon	Lotus	Team Lotus
36	T. T. Kyffin or D. Watts	Cooper-Bristol	T. T. Kyffin
*37	D. Giles	Triumph T.R.2	D. Giles

## NON-SUPERCHARGED RACING CARS UP TO 500 c.c.

(Reserves are marked with an asterisk)

No.	Driver	Car	Entrant
38	L. Leston	Cooper	The Cooper Car Co. Ltd.
39	S. Lewis-Evans	Cooper	The Cooper Car Co. Ltd.
40	M. Keen	Cooper	Alan Brown
41	I. Bueb	Cooper	Ecurie Demi-Litre
42	E. Brandon	Cooper	Ecurie Richmond
43	R. Y. Nuckey	Cooper	Ecurie Richmond
44	R. Mackenzie-Low	Cooper	R. Mackenzie-Low
45	R. K. Tyrrell	Cooper	R. K. Tyrrell
47	J. F. Westcott	Kieft	J. F. Westcott

48	D. Parker	Kieft	D. Parker
49	D. G. Walker	Kieft	D. G. Walker
50	Revis Motors	Revis	R. G. Bicknell
51	D. Taylor	Staride	D. Taylor
52	H. Phillipson	Staride	H. Phillipson
53	C. D. Headland	Martin-Headland	C. D. Headland
*54	E. Fenning	Staride	E. Fenning
55	C. M. Mauritzen	Cooper	Border Reivers
56	J. K. Hall	Cooper	Border Reivers
57	L. Lewis-Evans	Cooper	L. Lewis-Evans
58	A. E. Elliott	Cooper	Elliott and Eatough
59	H. C. Allison	Cooper	H. C. Allison
60	A. Zains	Cooper	A. Zains
61	J. F. Denley	Cooper	Ecurie Demi-Litre
62	A. V. Cowley	Cooper	A. V. Cowley
63	H. W. Walker	Walker Special	H. W. Walker
64	C. G. Arengo or W. C. Cuff	Arengo	C. G. Arengo
65	N. Berrow-Johnson	Martin Special	N. Berrow-Johnson
66	R. J. Barrett	Emeryson	A. J. Barrett
67	J. Caddey	Emeryson	J. Caddey
68	R. H. Ham	Arnott	R. H. Ham
69	D. V. Melhuish	Iota	D. V. Melhuish
70	J. E. Byrnes	Mezzolitre	B. Nicholson
*71	I. E. Raby	I.E.R. Midget	I. E. Raby
*72	A. Loens	Staride	M. Erskine
*73	J. Brown	Staride	M. Erskine
*74	G. Smith	Arnott	Miss D. Arnott

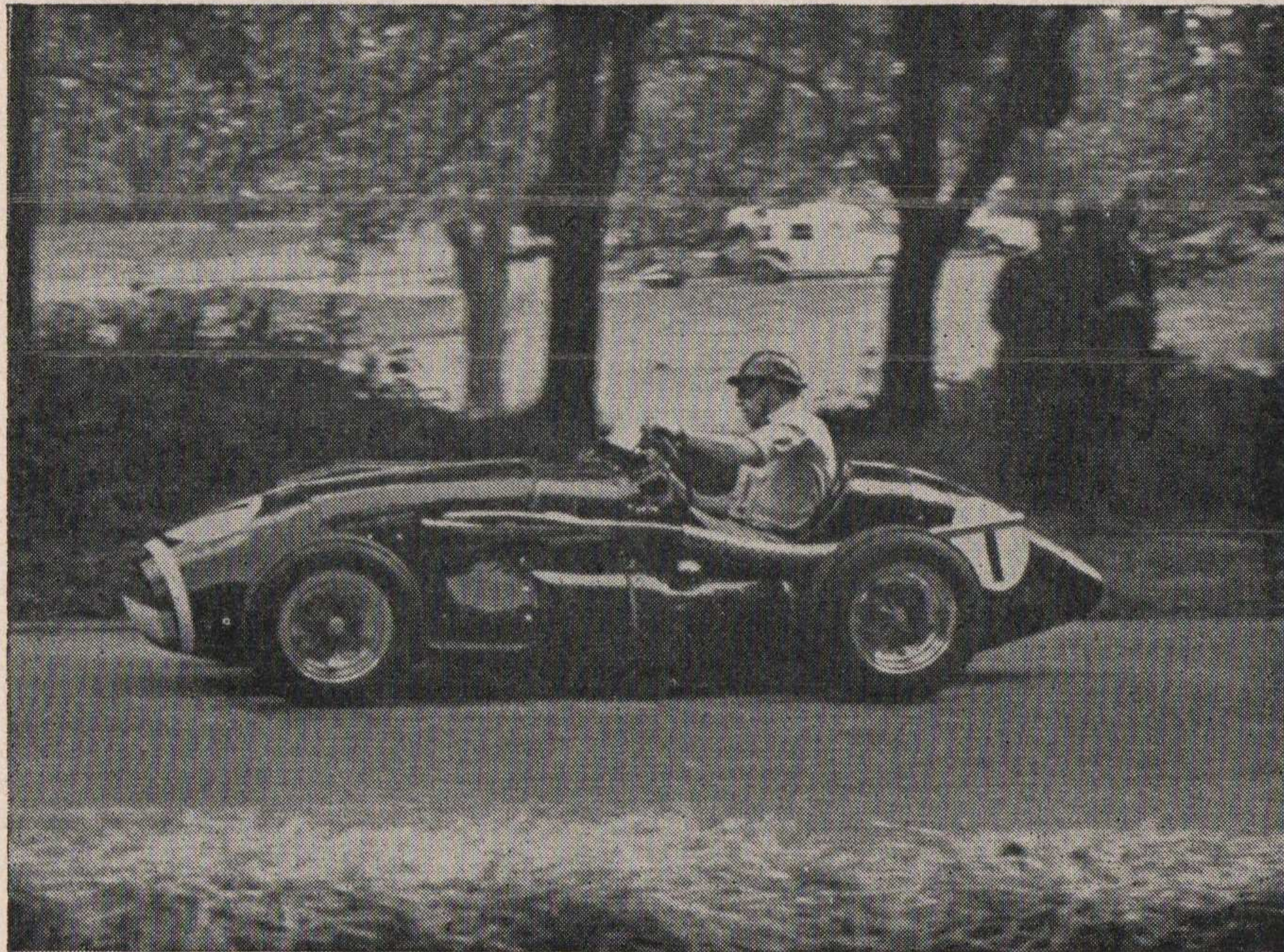
# B.A.R.C.

**THE Club for ALL keen motorists  
and, in particular, those who follow  
motor sport and motor racing**

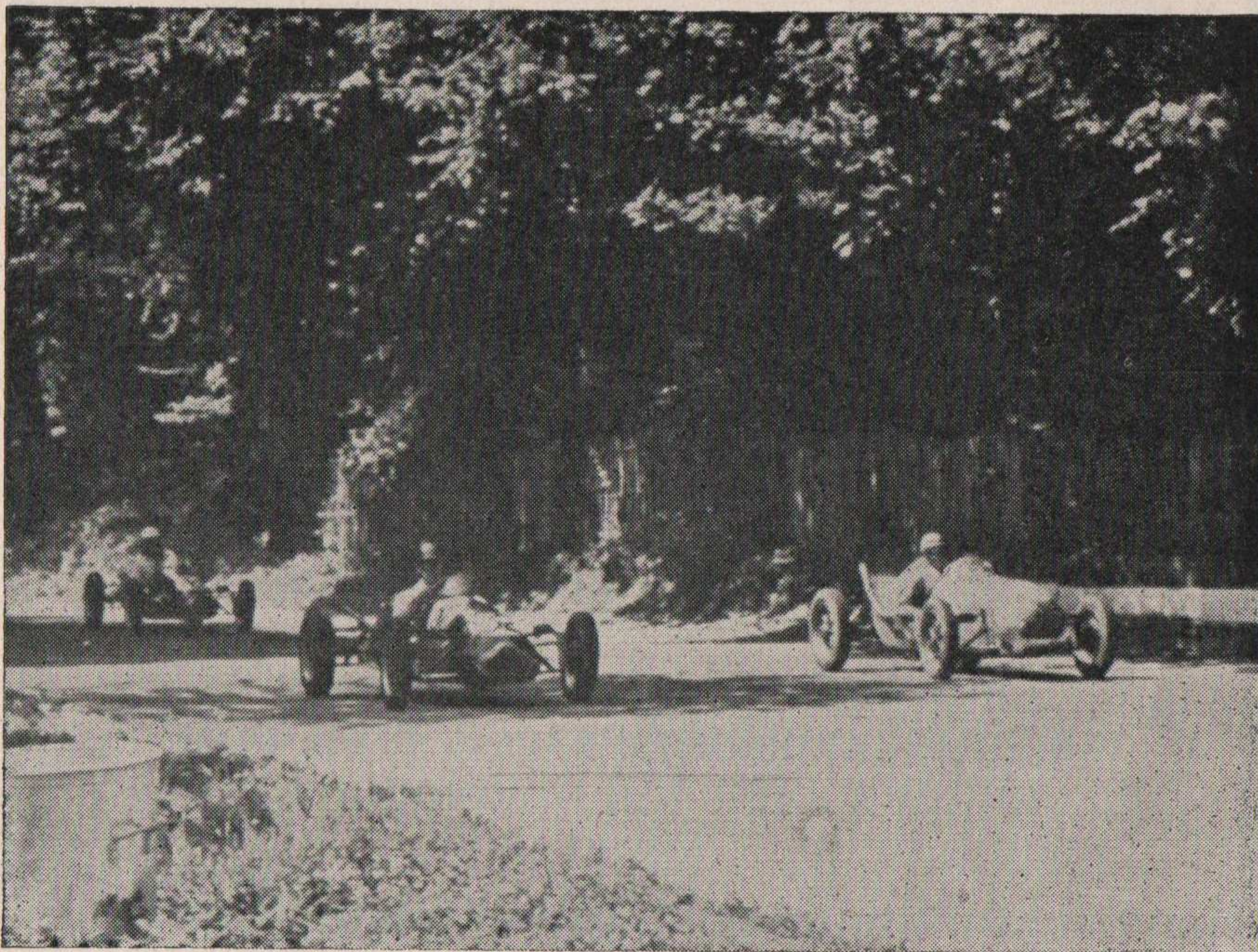
*Are YOU a member?*

Write for details to: The General Secretary  
**BRITISH AUTOMOBILE RACING CLUB, LTD.**  
55 PARK LANE :: LONDON, W.1





Photograph: G. Goddard



Photograph: G. Goddard

EVENT ONE

# Crystal Palace Trophy Race

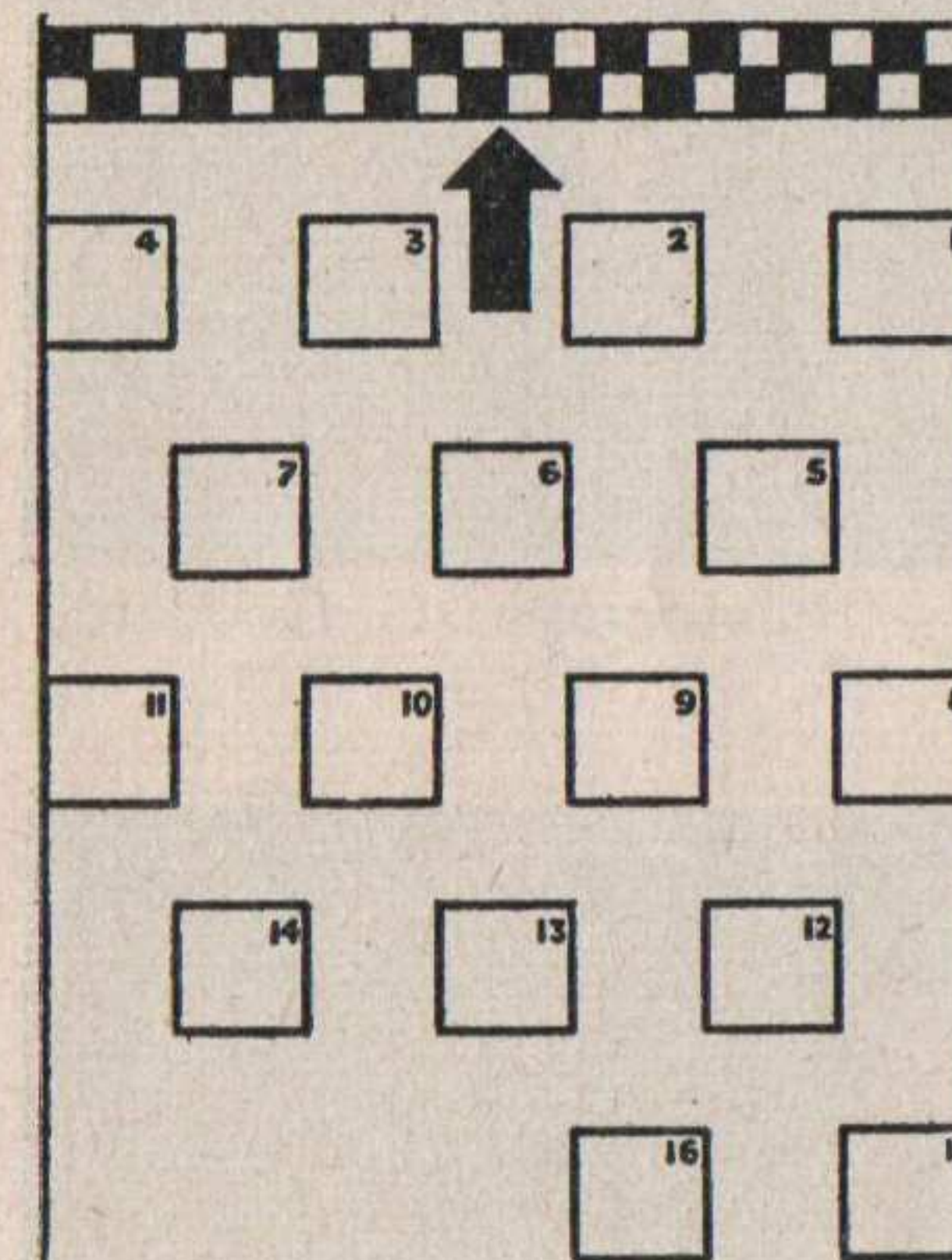
START 2.00 p.m.

HEAT 1

10 LAPS

For non-supercharged cars not exceeding 2500 c.c. engine capacity. The first six to finish will be invited to race in the final.

No.	Entrant and Driver	Car	Cyls.	c.c.	Colour	
1.	2 R. Parnell ... ..	Ferrari ... ..	4	2490	Red	11-26-6
2.	4 R. R. C. Walker ... .. (Driver: P. J. Collins)	Connaught ... ..	4	1967	Blue	11-35-6
6.	6 Roebuck Engineering Co. (Driver: M. F. Young)	Connaught ... ..	4	1960	Green	
	8 R. J. Chase ... .. (Driver: M. J. C. Keen)	Cooper-Bristol...	6	1971	Green	
	10 Gilby Engineering Co. Ltd. (Driver: R. F. Salvadori)	Maserati ... ..	6	2493	Green	
5.	14 E. N. Whiteaway ... ..	H.W.M. ... ..	4	2463	Green	
	16 R. A. Searles ... .. (Driver: O. E. Simpson)	Cooper ... ..	2	1097	Black	
3.	18 L. Leston ... ..	Cooper J.A.P. ... ..	2	1098	Green	11-38-4
4.	20 H. Gould ... ..	Cooper-Bristol ... ..	6	1971	Green	



LAPS	LEADERS				
	1ST	2ND	3RD	4TH	5TH
1	2	18	20	4	14
2	2	18	20	4	14
3	2	18	20	4	14
4	2	18	4	20	14
5	2	18	4	20	14
6	2	4	18	20	14
7	2	4	18	20	14
8	2	4	18	20	14
9	2	4	18	20	14
10	2	4	18	20	14

RESULT

1st. PARNELL 2nd. COLLINS 3rd. LESTON 4th. GOULD 5th. WHITEAWAY 6th. YOUNG

Winner's speed... 72.94 m.p.h. Fastest lap: No. 2 Speed... 74.69 m.p.h.  
11-26-6 R. PARNELL 1-7-0

NEW CIRCUIT LAP RECORD  
ON THE OPPOSITE PAGE

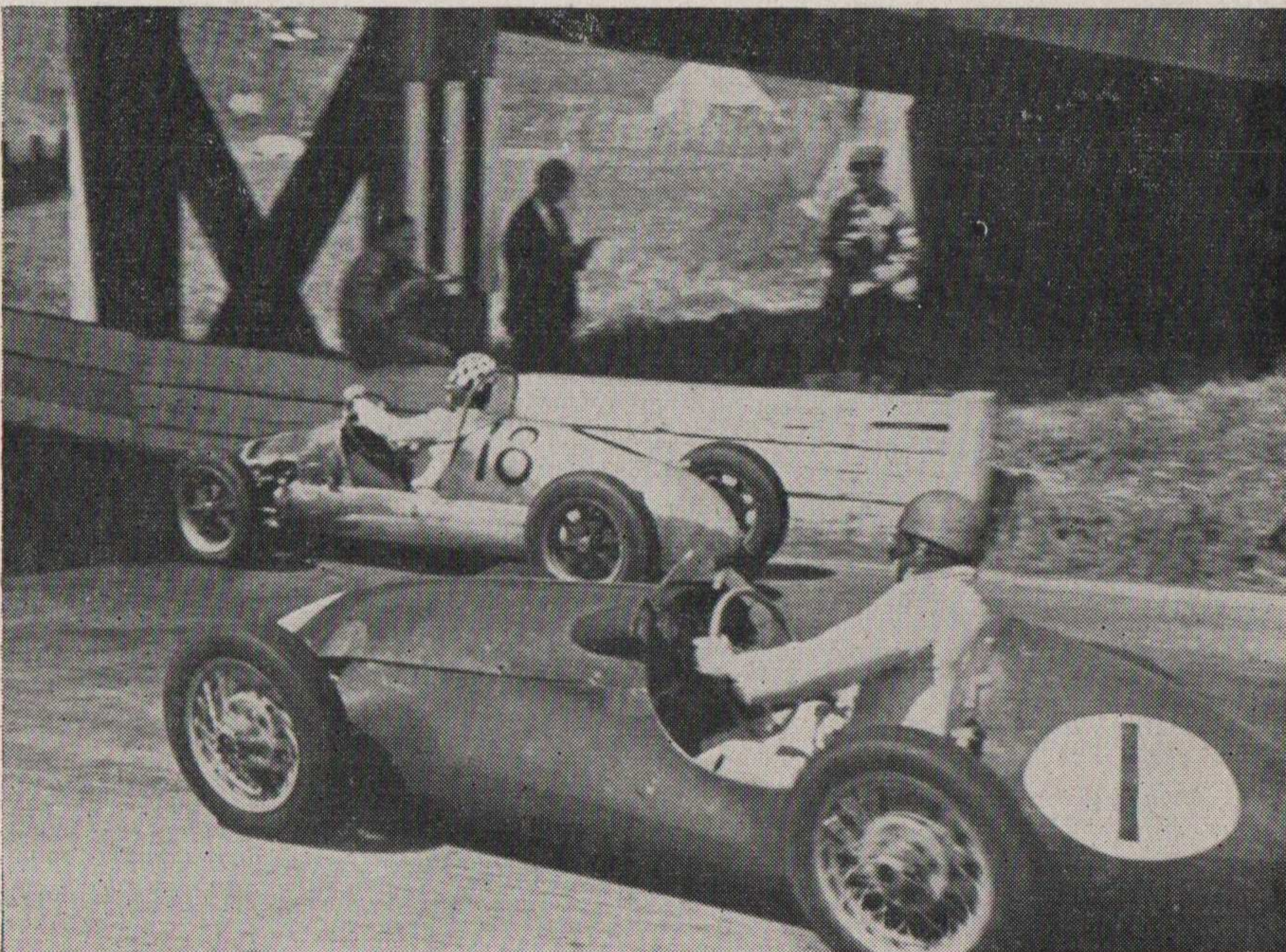
"Tony" Rolt handling R. R. C. Walker's 2-litre Connaught with customary skill. He won the Crystal Palace Trophy last July and was second in the London Trophy Race last September at this circuit. On each occasion he was driving the same Connaught which is always a model of good preparation. The 2-litre engine is evolved from the Coventry-built Lea-Francis. The highly-polished road-wheels are of magnesium-alloy—a very light metal which is used a great deal in the aircraft industry. Peter Collins is driving this car today.

A group of Coopers at speed through the Glade. This section of the Crystal Palace course has a "Continental race" appearance with its trees, fencing, and genuine road width. From this spot the cars accelerate hard for Park Curve, where they rush downhill to New Link. If the road is dry to-day the course record should be broken by the more powerful 2½-litre cars.





Photograph: G. Goddard



Photograph: G. Goddard

EVENT TWO

# Crystal Palace Trophy Race

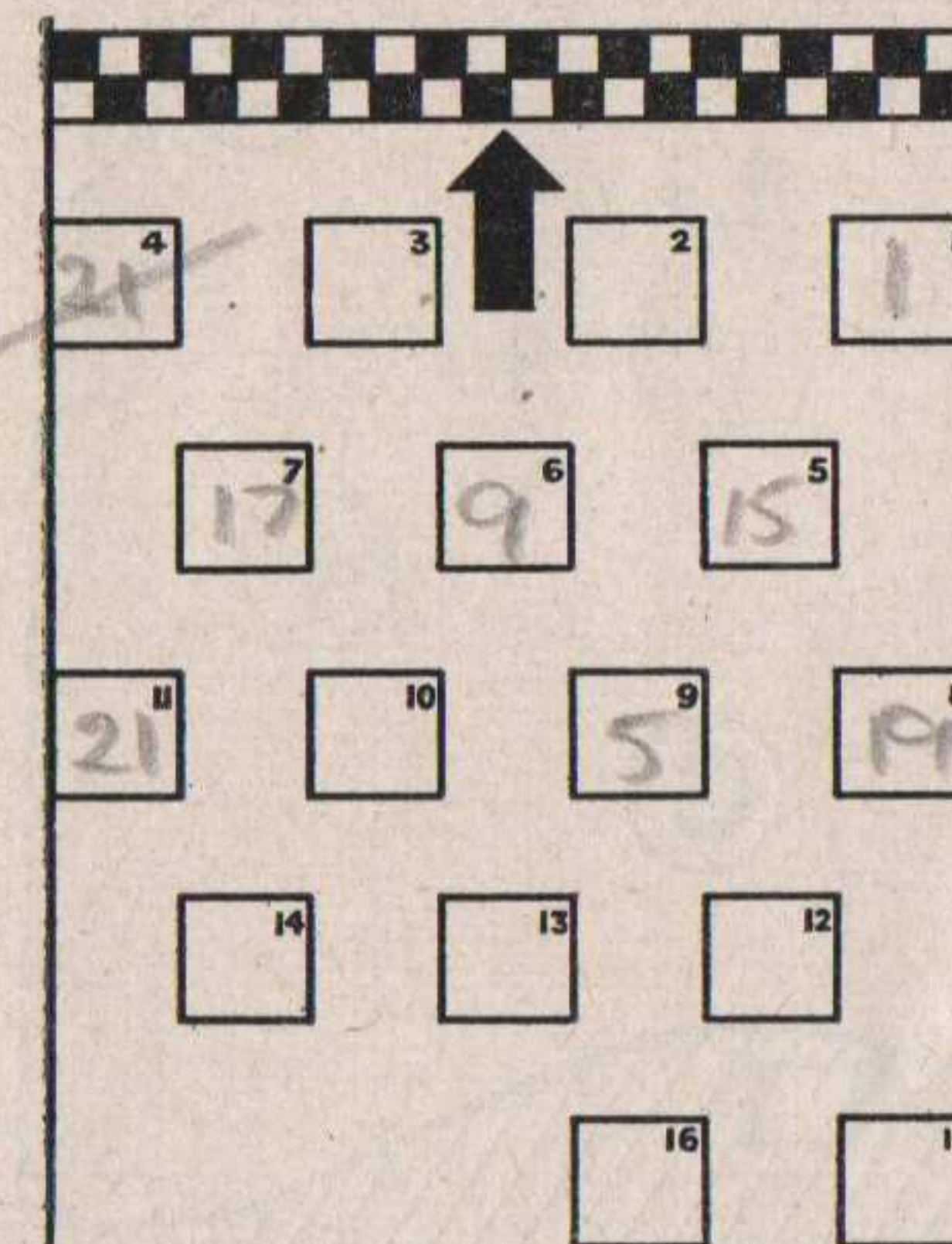
START 2.30 p.m.

HEAT 2

10 LAPS

For non-supercharged cars not exceeding 2500 c.c. engine capacity. The first six to finish will be invited to race in the final.

No.	Entrant and Driver	Car	Cyls.	c.c.	Colour	
2.	1 Sir Jeremy Boles ... .. (Driver: Entrant or D. B. Beauman)	Connaught ...	4	1967	Green	11-40.6
6.	3 C. D. Boulton ... ..	Connaught ...	4	1967	Green	
3.	5 W. J. Whitehouse ... ..	Connaught ...	4	1967	Green	11-49.0
1.	7 Ecurie Richmond ... .. (Driver: R. Y. Nuckey)	Cooper-Bristol...	6	1971	Green	11-36.4
RET.	9 Border Reivers ... .. (Driver: J. R. Somervail)	Cooper-Bristol...	6	1971	Blue	
5.	11 Emeryson Cars ... .. (Driver: P. R. Emery)	Emeryson ...	4	1960	Green	
4.	15 J. H. Webb ... .. (Driver: Entrant or J. E. G. Fairman)	Turner ...	4	1960	Green	
	17 C. G. H. Dunham ... .. (Driver: G. Dunham)	D.H.S. ALVIS..	6	1996	Green	
RET.	19 D. C. T. Bennett ... ..	Cooper ...	2	998	Green	
	21 T. T. Kyffin ... .. (Driver: Entrant or D. Watts)	Cooper-Bristol	6	1971	Green	



LAPS	LEADERS				
	1ST	2ND	3RD	4TH	5TH
1	7	15	11	3	1
2	7	15	11	1	5
3	7	1	15	5	11
4	7	1	5	15	11
5	7	1	5	15	11
6	7	1	5	15	11
7	7	1	5	15	11
8	7	1	5	15	11
9	7	1	5	15	11
10	7	1	5	15	11

RESULT

1st. NUCKEY. 2nd. BEAUMAN. 3rd. WHITEHOUSE. 4th. FAIRMAN. 5th. EMERY. 6th. BOULTON.  
 Winner's speed.....71.90.....m.p.h. Fastest lap: No.....7..... Speed.....73.59.....m.p.h.  
 11-36.4 R. NUCKEY 1-8.0

ON THE OPPOSITE PAGE

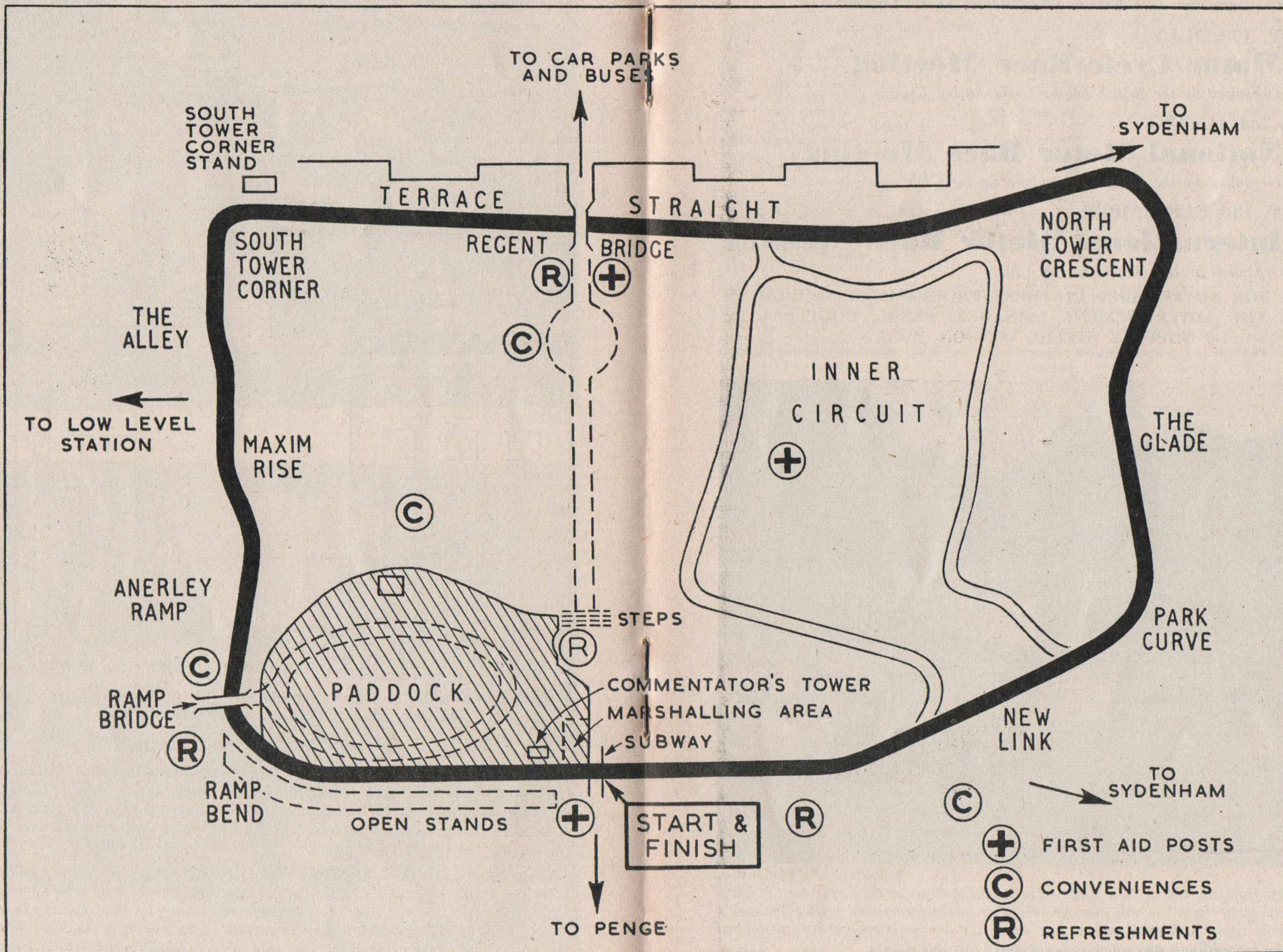
Ken Wharton (Cooper-Bristol), one of Britain's most versatile drivers, leads Lance Macklin (H.W.M.) and "Tony" Rolt (Connaught) under Ramp Bend Bridge. To-day Wharton is driving his 2-litre Cooper-Bristol with which he took second place in the Coronation Trophy Race at the Crystal Palace last year. Rolt's "cornering line" is interesting, "drifting" the car around the corner by aiming the car at the bridge support.

Leslie Thorne's Cooper-JAP leading Harold Daniell's Emeryson-Norton under Ramp Bend Bridge at last September's Crystal Palace International meeting. The Cooper has normal rear-wheel drive, but the 500 c.c. Emeryson cars, built by Paul Emery, have front-wheel drive. Paul is racing his 2-litre Alta-engined Emeryson here to-day. Harold Daniell, the Forest Hill motor cycle agent, who won three I.O.M. Tourist Trophy races, has retired from active motor racing.



# CRYSTAL PALACE ROAD RACING CIRCUIT

All racing takes place in a clockwise direction. For full details of travel and other Crystal Palace facilities, please refer to plan on page 24.





# FUTURE RACE MEETINGS AT CRYSTAL PALACE IN 1954

*By arrangement with Crystal Palace Motor Sports Committee*

**SATURDAY, 17th JULY**

## Motor Cycle Race Meeting

*Organised by the British Motor Cycle Racing Club*

**MONDAY, 2nd AUGUST**

## National Motor Race Meeting

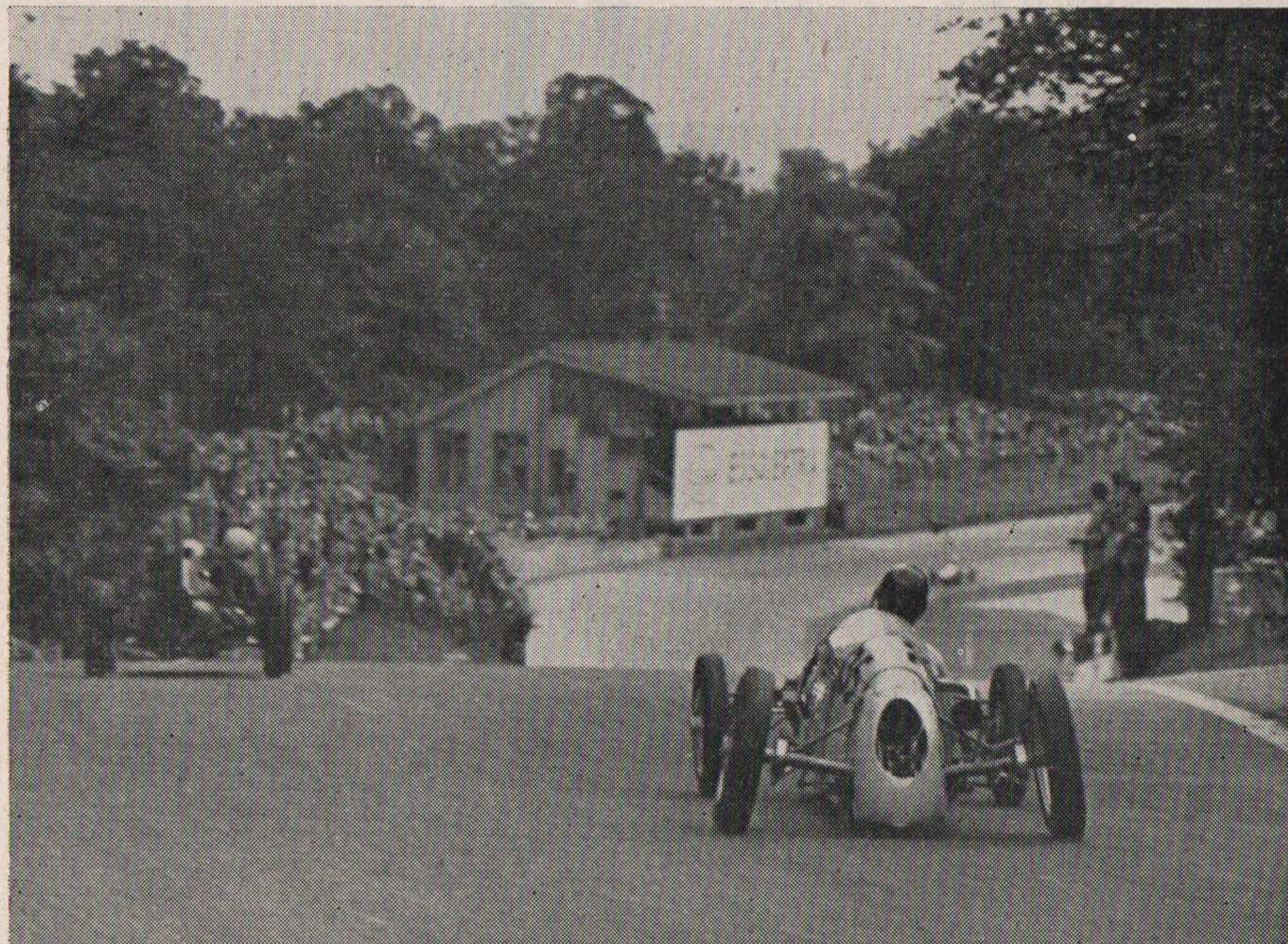
*Organised by the British Automobile Racing Club*

**SATURDAY, 18th SEPTEMBER**

## International Motor Race Meeting

*Organised by the Half-Litre Car Club*

ENQUIRIES FOR ADVERTISING IN THESE PROGRAMMES SHOULD BE  
MADE TO: THE ADVERTISEMENT MANAGER, PEARL, COOPER LTD.,  
2-3 NORFOLK STREET, LONDON, W.C.2.



Photograph: G. Goddard

*Drivers' view from the top of New Link. The gradient down to the finish area is steep enough to resemble a "step" in this photograph. Car in the foreground is Reg Bicknell's Staride which he drove with such success last year. To-day he is racing his streamlined Revis, which he himself built and which is particularly fast this season.*

**START 3.00 p.m.**

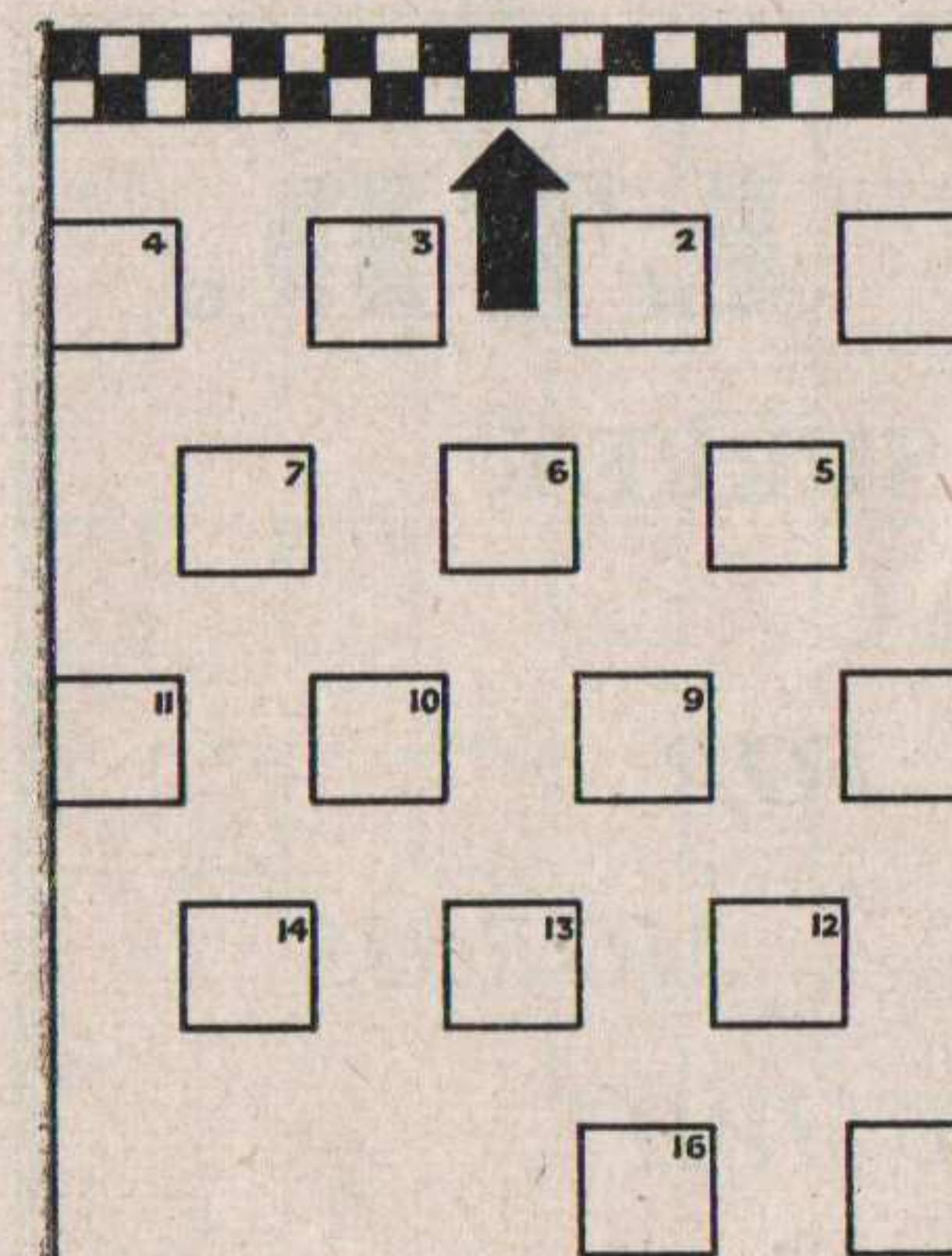
**EVENT THREE**

**10 LAPS**

## 500 c.c. RACE (A)

*For non-supercharged racing cars not exceeding 500 c.c. engine capacity.*

No.	Entrant and Driver	Car	Cyls.	c.c.	Colour	
38	The Cooper Car Co. Ltd.... (Driver: L. Leston)	Cooper ...	1	500	Green	
39	The Cooper Car Co. Ltd.... (Driver: S. Lewis-Evans)	Cooper ...	1	500	Green	
2. 40	Alan Brown ... (Driver: M. Keen)	Cooper ...	1	497	Silver	11-53.8
3. 41	Ecurie Demi-Litre ... (Driver: I. Bueb)	Cooper ...	1	499	Grey	11-54.0
4. 42	Ecurie Richmond ... (Driver: E. Brandon)	Cooper ...	1	500	Green	11-54.4
43	Ecurie Richmond ... (Driver: R. Y. Nuckey)...	Cooper ...	1	500	Green	
44	R. Mackenzie-Low ...	Cooper ...	1	499	Green	
45	R. K. Tyrrell ...	Cooper ...	1	499	Silver	
47	J. F. Westcott ...	Kieft ...	1	499	Green	
5. 48	D. Parker ...	Kieft ...	1	497	Maroon	11-55.0
49	D. G. Walker ...	Kieft ...	1	499	Green	
1. 50	Revis Motors ... (Driver: R. G. Bicknell)	Revis ...	1	500	Blue/Yellow	11-50.2
6. 51	D. Taylor ...	Staride ...	1	499	Green	11-56.4
52	H. Phillipson ...	Staride ...	1	498	Blue	
53	C. Headland...	Martin-Headland	1	499	Silver	
54	E. Fenning ...	Staride ...	1	499	Silver	
72	M. Erskine (1st Reserve) ... (Driver: A. Loens)	Staride ...	1	499	Green	
74	Miss D. M. Arnott (2nd Reserve)... (Driver: G. Smith)	Arnott ...	1	499	Green	



LAPS	LEADERS				
	1ST	2ND	3RD	4TH	5TH
1	42	50	40		
2	50	42	40	41	48
3	50	42	41	48	40
4	50	42	41	48	40
5	50	42	41	48	40
6	50	42	41	48	40
7	50	41	42	48	40
8	50	42	41	48	40
9	50	42	41	48	40
10	50	40	41	42	48

### RESULT

1st. BICKNELL 2nd. KEEN 3rd. BUEB 4th. BRANDON 5th. PARKER 6th. TAYLOR

Winner's Speed..... 70.48 .....m.p.h. Fastest Lap: No..... 50 ..... Speed..... 72.31 .....m.p.h.

11-50.2

R. BICKNELL

1-9.2



# TRINITY CARS LTD

Managing Director: S. M. Lawry

94 NORTH SIDE, WANDSWORTH COMMON, S.W.18

Telephone: VANdyke 1166

Officially appointed Dealers for

**AUSTIN, FORD, ROVER, STANDARD, TRIUMPH**

*Service . . . . .*

From his chosen garage is the right of every Motorist; he expects Speed and Efficiency, not only with Major Repairs, but also with Routine Maintenance. Because we aim at such a Service we think you will enjoy dealing with us.

## L. F. WARD LTD.

OF THORNTON HEATH, SURREY

OFFICIAL RETAILERS FOR

BRISTOL :: M.G. :: MORRIS

STANDARD AND TRIUMPH

WE ALWAYS HAVE A GOOD SELECTION

:: OF USED CARS OF ALL TYPES ::

GRANGE ROAD GARAGE, THORNTON HEATH

THO 3347

(WEST END OFFICE: HANOVER COURT YARD, W.I.)  
MAY 5253, 0146

START 3.30 p.m.

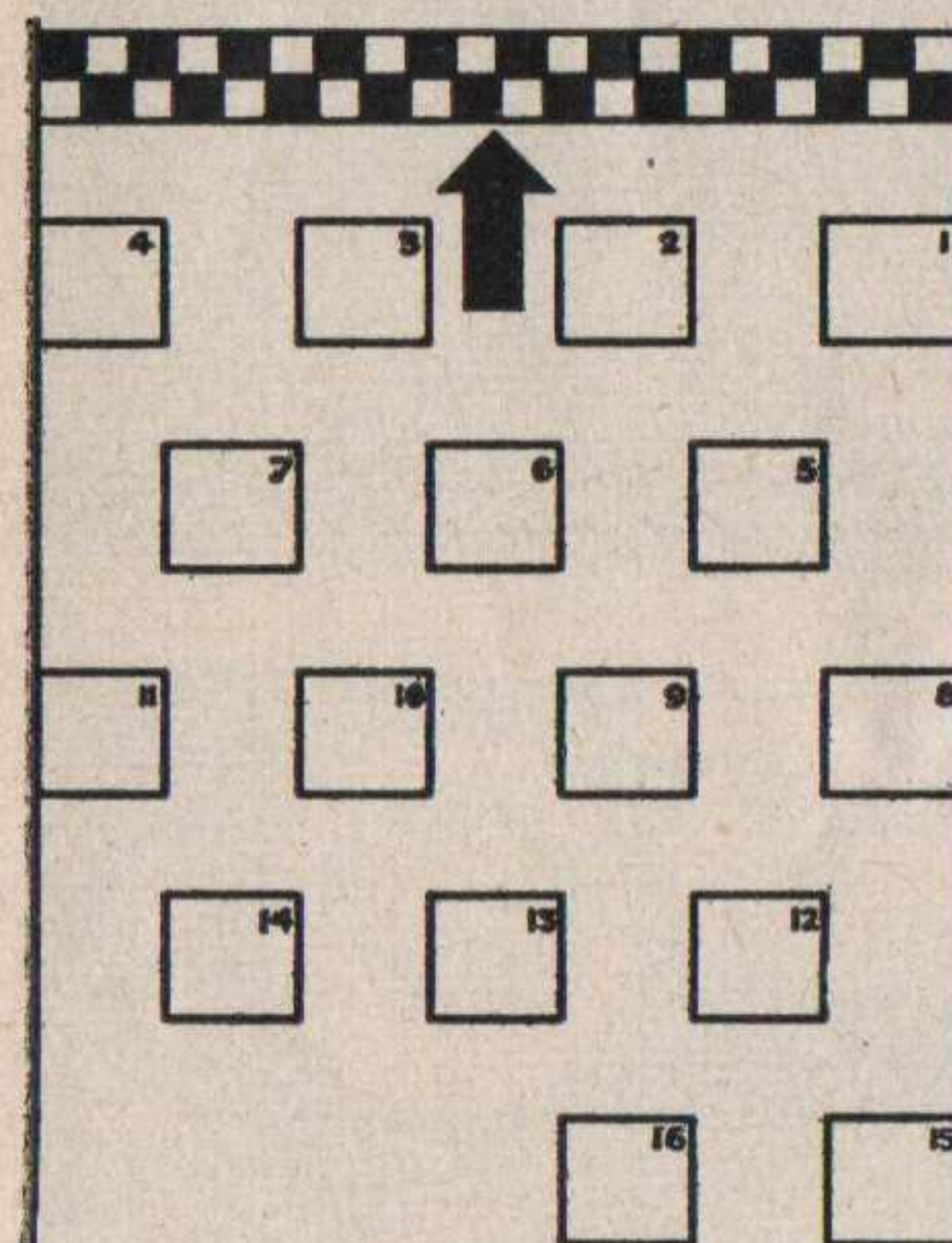
EVENT FOUR

10 LAPS

### 500 c.c. RACE (B)

For non-supercharged racing cars not exceeding 500 c.c. engine capacity.

No.	Entrant and Driver	Car	Cyls.	c.c.	Colour	
55	The Border Reivers ... (Driver: C. M. Mauritzen)	Cooper ...	1	497	Blue	
1. 56	The Border Reivers ... (Driver: J. K. Hall)	Cooper ...	1	497	Blue	12-2-8
57	L. Lewis-Evans ...	Cooper ...	1	500	Green	
6. 58	Elliott and Eatough ... (Driver: A. E. Elliott)	Cooper ...	1	500	Green	
5. 59	H. C. Allison ... (Driver: C. Allison)	Cooper ...	1	499	Green	
60	A. Zains ...	Cooper ...	1	499	Red	
61	Ecurie Demi-Litre ... (Driver: J. F. Denley)	Cooper ...	1	499	Green	
2. 62	A. V. Cowley ...	Cooper ...	1	500	Yellow	12-10-8
4. 63	H. W. Walker ...	Walker Special	1	499	Blue	12-12-0
64	C. G. Arengo ... (Driver: Entrant or W. C. Cuff)	Arengo ...	1	499	Green	
65	N. Berrow-Johnson ...	Martin Special	1	499	Green	
66	A. J. Barrett ... (Driver: R. J. Barrett)	Emeryson ...	1	499	Red	
67	J. Caddey ...	Emeryson ...	1	500	Ivory	
RET. 68	R. H. Ham ...	Arnott ...	1	498	Green	
69	D. V. Melhuish ...	Iota ...	2	498	Green	
70	J. E. Byrnes ... (Driver: B. Nicholson)	Mezzolitre ...	1	500	Green	
71	I. E. Raby ... (1st Reserve)	I.E.R. Midget ...	1	499	Yellow	
3. 73	M. Erskine ... (2nd Reserve) (Driver: J. Brown)	Staride ...	1	499	Yellow	12-11-0



LAPS	LEADERS				
	1ST	2ND	3RD	4TH	5TH
1	56	62	63	68	71
2	56	62	63	73	59
3	56	62	63	73	59
4	56	62	63	73	59
5	56	62	63	73	59
6	56	62	63	73	59
7	56	62	63	73	59
8	56	62	73	63	59
9	56	62	73	63	59
10	56	62	73	63	59

#### RESULT

1st.....HALL... 2nd.....COWLEY 3rd.....BROWN 4th.....WALKER 5th.....ALLISON 6th.....ELLIOTT

Winner's speed.....69.25.....m.p.h. Fastest lap: No.....56..... Speed.....71.28.....m.p.h.

12-2-8

17

J. HALL

1-10-2

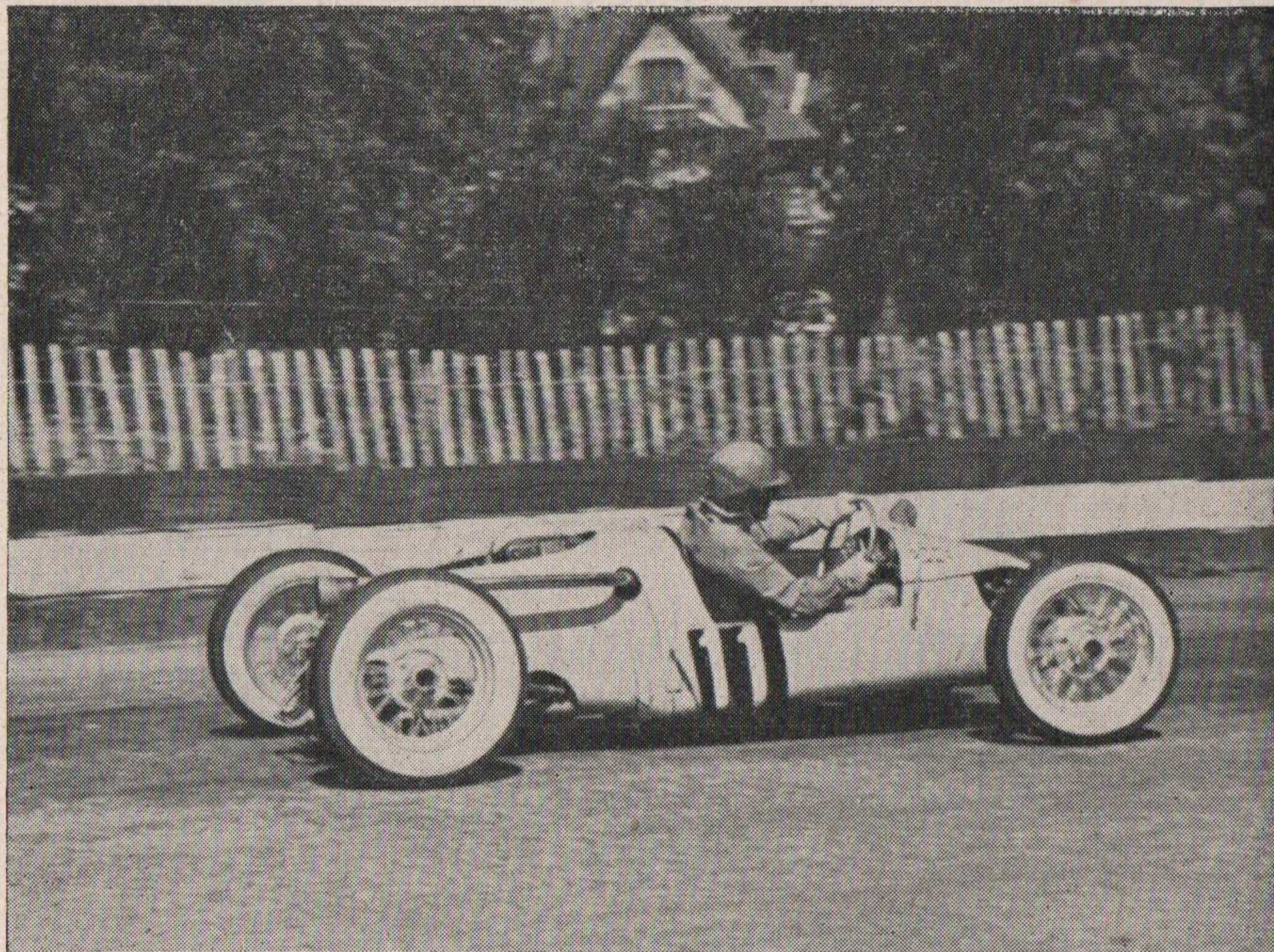


## Crystal Palace Records

**COURSE RECORD:** R. Salvadori (1960 c.c. Connaught) and R. Flockhart (1960 c.c. Connaught), 73.59 m.p.h.

**FORMULA III LAP RECORD:** L. Leston (Leston-Special), 71.69 m.p.h.

**SPORTS CARS LAP RECORD:** H. A. Mitchell (1971 c.c. Frazer-Nash), 68.55 m.p.h.



Photograph: G. Goddard

Les Leston, 1/2-litre class record holder and star performer at the Crystal Palace with Leston-Special, Cooper 500 c.c. and 1100 c.c. cars. In this photograph he is driving the Leston-Special which he recently presented to the Half-Litre Club for racing aspirants to drive for experience. To-day he is driving his own 1100 c.c. Cooper-JAP, which is a very formidable car on this short circuit, and also a Cooper "500", which is entered by the Cooper Car Co.

START 4.00 p.m.

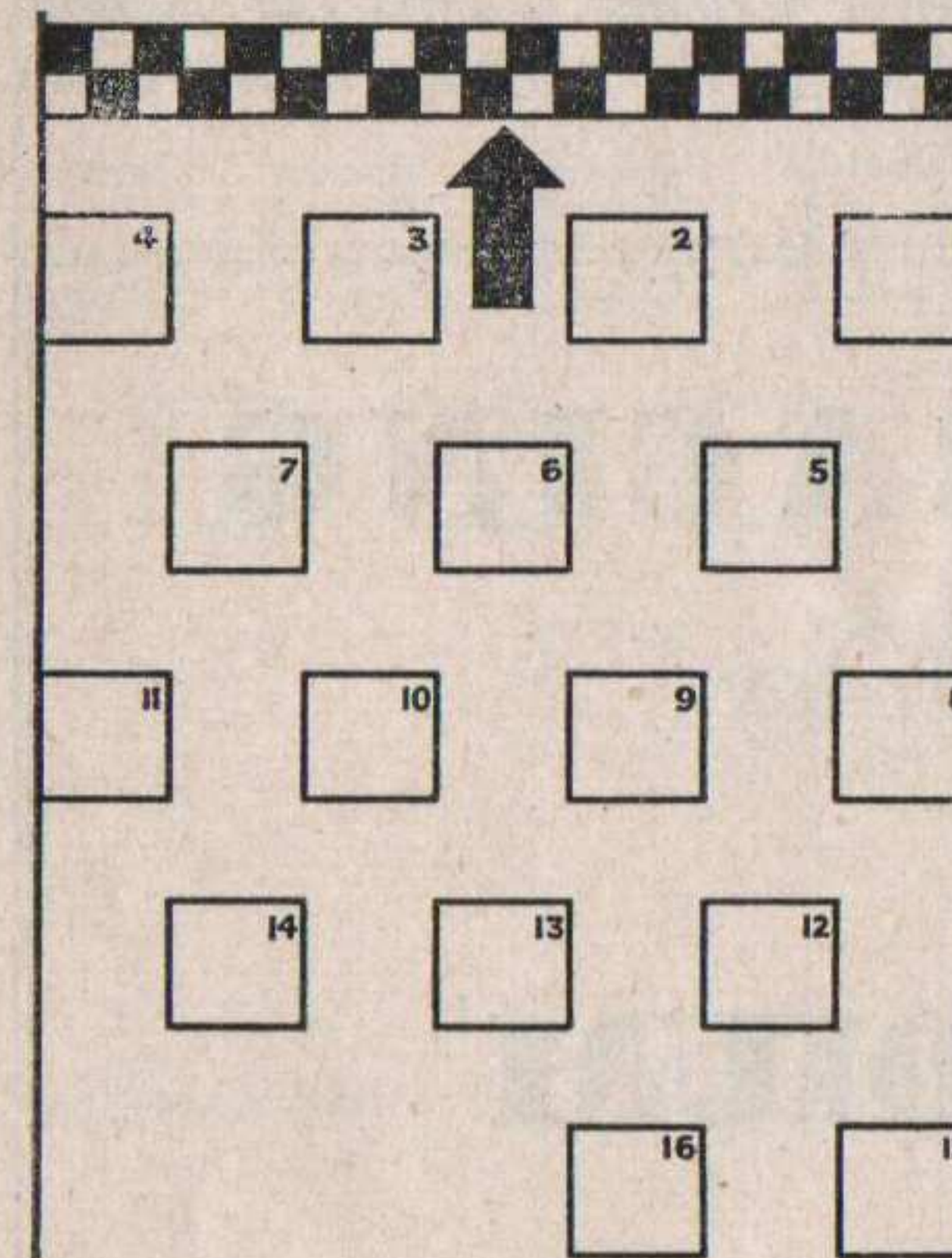
EVENT FIVE

10 LAPS

## THE CLUB TROPHY RACE

For (a) Non-supercharged Racing Cars not exceeding 2000 c.c.; and (b) Supercharged Racing Cars not exceeding 1500 c.c.

No.	Entrant and Driver	Car	Cyls.	c.c.	Colour	
2.	1 Sir Jeremy Boles ... (Driver: Entrant or D. B. Beauman)	Connaught ...	4	1967	Green	11-42.8
7.	3 C. D. Boulton ...	Connaught ...	4	1967	Green	
RET.	4 R. R. C. Walker ... (Driver: P. J. Collins)	Connaught ...	4	1962	Blue	
4.	5 W. J. Whitehouse ...	Connaught ...	4	1967	Green	
3.	7 Ecurie Richmond ... (Driver: R. Y. Nuckey)	Cooper-Bristol ...	6	1971	Green	11-43.2
	8 R. J. Chase ... (Driver: Alan Brown)	Cooper-Bristol ...	6	1971	Green	
5.	9 Border Reivers ... (Driver: J. K. Hall)	Cooper-Bristol ...	6	1971	Blue	
8.	11 Emeryson Cars ... (Driver: P. Emery)	Emeryson ...	4	1960	Green	
	15 J. H. Webb ... (Driver: Entrant or J. E. G. Fairman)	Turner ...	4	1960	Green	
	17 C. G. H. Dunham ... (1st Reserve) (Driver: G. Dunham)	D.H.S. ALVIS.	6	1996	Green	
1.	18 L. Leston ... (2nd Reserve)	Cooper ...	2	1098	Green	11-38.6
	19 D. C. T. Bennett ... (3rd Reserve)	Cooper ...	2	998	Green	
6.	22 A. G. Whitehead ... (Driver: Entrant or E. W. Holt)	E.R.A. s/c. ...	6	1488	Green	
	23 Border Reivers ... (Driver: J. A. Somervail)	E.R.A. s/c. ...	6	1488	Blue	
9.	24 A. W. Birrell ...	E.R.A. s/c. ...	6	1488	Blue	



LAPS	LEADERS				
	1ST	2ND	3RD	4TH	5TH
1	1	18	3	7	11
2	1	18	7	5	3
3	18	1	7	5	3
4	18	1	7	5	3
5	18	1	7	5	22
6	18	1	7	5	22
7	18	1	7	5	9
8	18	1	7	5	9
9	18	1	7	5	9
10	18	1	7	5	9

### RESULT

1st... LESTON 2nd... BEAUMAN 3rd... NUCKEY 4th... WHITEHOUSE 5th... HALL 6th... WHITEHEAD

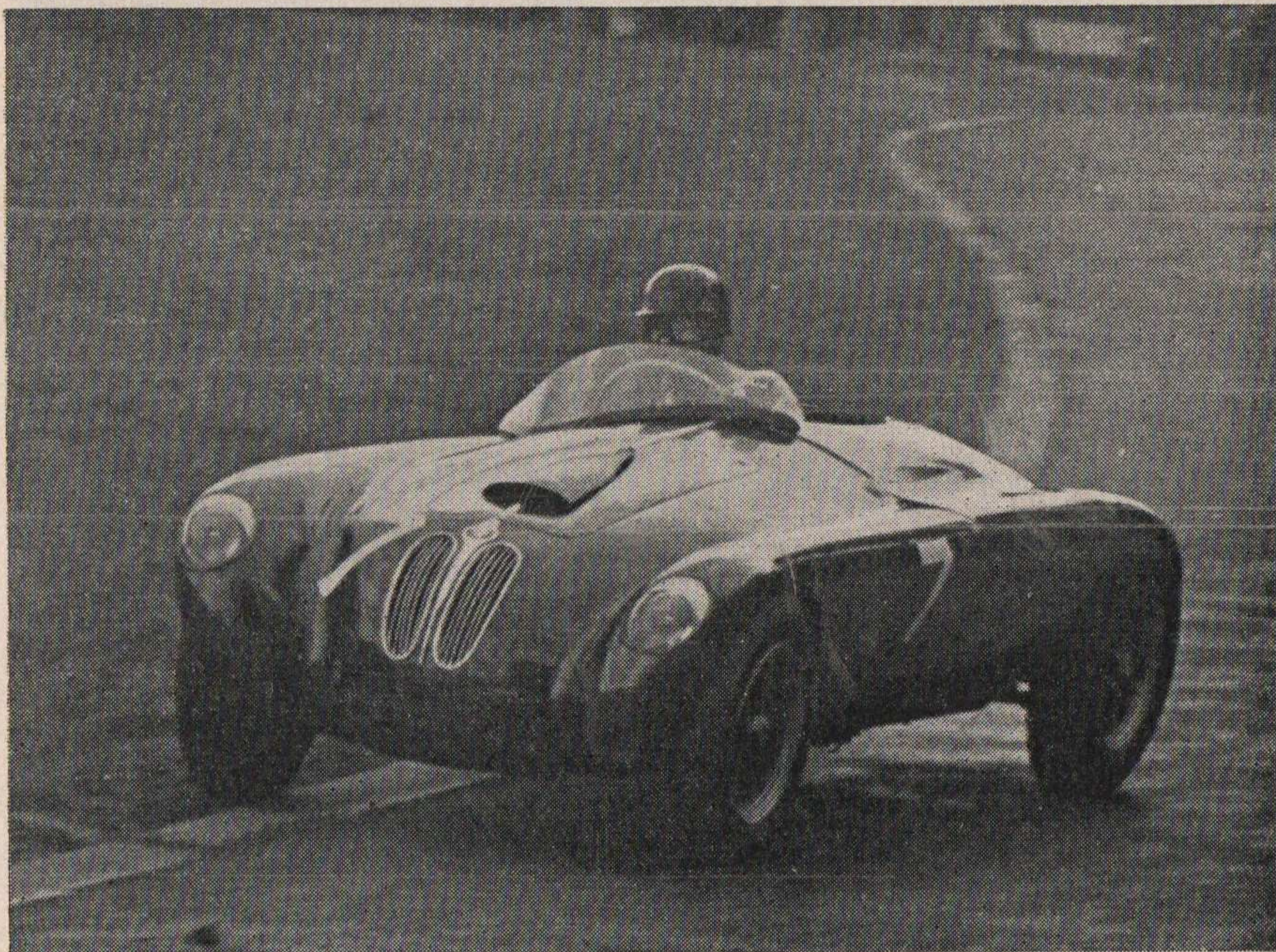
Winner's Speed... 71.69 m.p.h. Fastest lap: No... 18 Speed... 73.16 m.p.h.

11-38.6

L. LESTON

1-8.4





Photograph: G. Goddard

"Tony" Crook, motor dealer from Caterham, Surrey, has a fiery driving style and is seen here taking his Cooper-Bristol two-seater into South Tower Corner. This car is now owned by A. P. O. Rogers who will race it to-day. A few weeks ago the car was in the news when it lost a front wheel at speed, but Rogers was unhurt.

## GREYHOUND RACING

Every Thursday and Saturday

at 7.45 p.m.

## CATFORD STADIUM

Thursday, July 1st

## CATFORD HORSE SHOW

10.30 a.m. — 9.30 p.m.

SPECIAL EVENING SESSION

CATFORD AND CATFORD BRIDGE STATIONS ADJOIN STADIUM

START 4.30 p.m.

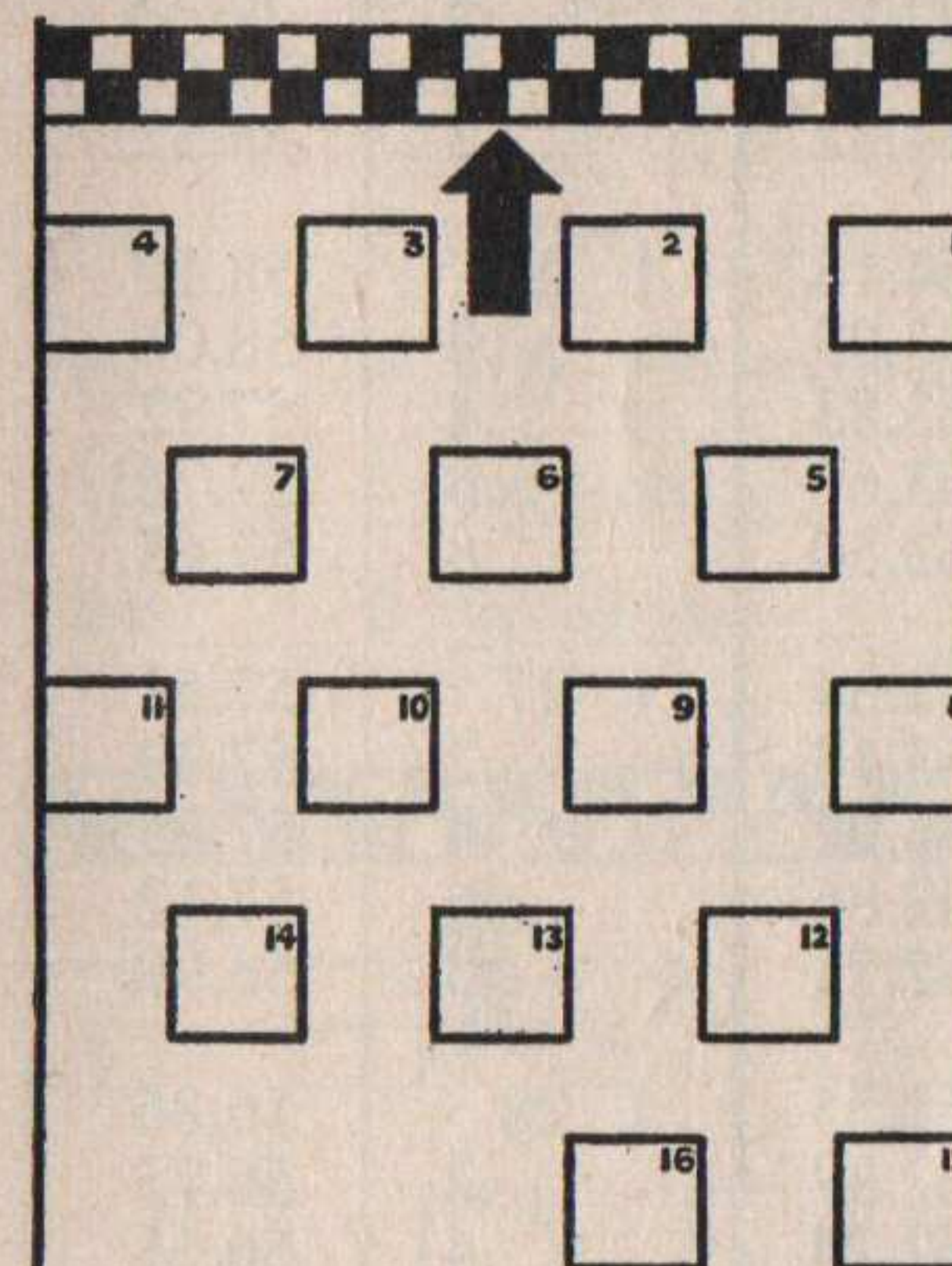
EVENT SIX

10 LAPS

## SPORTS CAR RACE

For non-supercharged sports cars not exceeding 2000 c.c.

No.	Entrant and Driver	Car	Cyls.	c.c.	Colour	
2	25 R. J. Chase ... (Driver: Alan Brown)	Cooper-Bristol...	6	1971	Green	12-23.2
4	26 A. P. O. Rogers ...	Cooper-Bristol...	6	1971	Maroon	
3	27 D. Hely ... (Driver: C. A. S. Brooks)	Frazer-Nash ...	6	1971	Green	12-30.2
	28 P. Scott-Russell ...	Frazer-Nash ...	6	1971	Green	
	29 D. J. Calvert ...	Kieft ...	6	1971	Green	
	30 P. R. Crabb ...	Kieft ...	6	1994	Red	
6	31 D. E. Howard ...	H.W.M.-Alta ...	4	1960	Green	
	32 F. C. Davis ...	Tojeiro ...	6	1971	Silver	
1	33 Gilby Engineering Co. Ltd. (Driver: R. F. Salvadori)	Maserati ...	6	1988	Green	12-22.0
287	34 Team Lotus ... (Driver: A. C. B. Chapman)	Lotus ...	4	1467	Green	
	35 Team Lotus ... (Driver: P. D. Gammon)	Lotus ...	4	1467	Green	
5	36 T. T. Kyffin ... (Driver: Entrant or D. Watts)	Cooper-Bristol...	6	1971	Green	
7	37 D. Giles (1st Reserve) ...	Triumph TR2 ...	4	1991	White	



LAPS	LEADERS				
	1ST	2ND	3RD	4TH	5TH
1	33	27	25	34	26
2	34	33	25	27	26
3	34	33	25	27	26
4	33	25	27	26	36
5	33	25	27	26	36
6	33	25	27	26	36
7	33	25	27	26	36
8	33	25	27	26	36
9	33	25	27	26	36
10	33	25	27	26	36

### RESULT

1st SAWDOZI 2nd... BROWN 3rd... BROOKS 4th... ROGERS 5th... KYFFIN 6th... HOWARD

Winner's Speed... 67.44... m.p.h. Fastest Lap: No... 34... Speed... 70.88... m.p.h.  
12-22.0 C. CHAPMAN 1-10.6

NEW SPORTS CAR LAP RECORD



are protecting this meeting against **FIRE**  
Make sure your car is safe

For full details write for illustrated literature to THE PYRENE COMPANY LTD., Dept. C.P.P.6, 9 Grosvenor Gardens, London, S.W.1. Tel: VICTORIA 3401

34. C. CHAPMAN - RETIRED : BROKEN HALF SHAFT



# LAP SPEED TABLE

1 lap=1.39 miles

LAP TIME	SPEED	LAP TIME	SPEED	LAP TIME	SPEED	LAP TIME	SPEED
M. S.	M.P.H.	M. S.	M.P.H.	M. S.	M.P.H.	M. S.	M.P.H.
0 59	84.81	1 7	74.69	1 15	66.72	1 23	60.29
.2	84.53	.2	74.46	.2	66.54	.2	60.14
.4	84.24	.4	74.24	.4	66.37	.4	60.00
.6	83.96	.6	74.02	.6	66.19	.6	59.86
.8	83.68	.8	73.81	.8	66.02	.8	59.71
1 0	83.40	1 8	73.59	1 16	65.84	1 24	59.57
.2	83.12	.2	73.37	.2	65.67	.2	59.43
.4	82.85	.4	73.16	.4	65.50	.4	59.29
.6	82.57	.6	72.94	.6	65.33	.6	59.15
.8	82.30	.8	72.73	.8	65.16	.8	59.01
1 1	82.03	1 9	72.52	1 17	64.99	1 25	58.87
.2	81.76	.2	72.31	.2	64.82	.2	58.73
.4	81.50	.4	72.10	.4	64.65	.4	58.59
.6	81.23	.6	71.90	.6	64.48	.6	58.46
.8	80.97	.8	71.69	.8	64.32	.8	58.32
1 2	80.71	1 10	71.49	1 18	64.15	1 26	58.19
.2	80.45	.2	71.28	.2	63.99	.2	58.05
.4	80.19	.4	71.08	.4	63.83	.4	57.92
.6	79.94	.6	70.88	.6	63.66	.6	57.78
.8	79.68	.8	70.68	.8	63.50	.8	57.65
1 3	79.43	1 11	70.48	1 19	63.34	1 27	57.51
.2	79.18	.2	70.28	.2	63.18	.2	57.39
.4	78.93	.4	70.08	.4	63.02	.4	57.25
.6	78.68	.6	69.89	.6	62.86	.6	57.12
.8	78.43	.8	69.69	.8	62.71	.8	56.99
1 4	78.19	1 12	69.50	1 20	62.55	1 28	56.86
.2	77.94	.2	69.31	.2	62.39	.2	56.73
.4	77.70	.4	69.12	.4	62.24	.4	56.61
.6	77.46	.6	68.93	.6	62.08	.6	56.48
.8	77.22	.8	68.74	.8	61.93	.8	56.35
1 5	76.98	1 13	68.55	1 21	61.78	1 29	56.22
.2	76.75	.2	68.36	.2	61.63	.2	56.10
.4	76.51	.4	68.17	.4	61.47	.4	55.97
.6	76.28	.6	67.99	.6	61.32	.6	55.85
.8	76.05	.8	67.80	.8	61.17	.8	55.72
1 6	75.82	1 14	67.62	1 22	61.02	1 30	55.60
.2	75.59	.2	67.44	.2	60.88	.2	55.48
.4	75.36	.4	67.26	.4	60.73	.4	55.35
.6	75.14	.6	67.08	.6	60.58	.6	55.23
.8	74.91	.8	66.90	.8	60.43	.8	55.11

START 5.00 p.m.

EVENT SEVEN

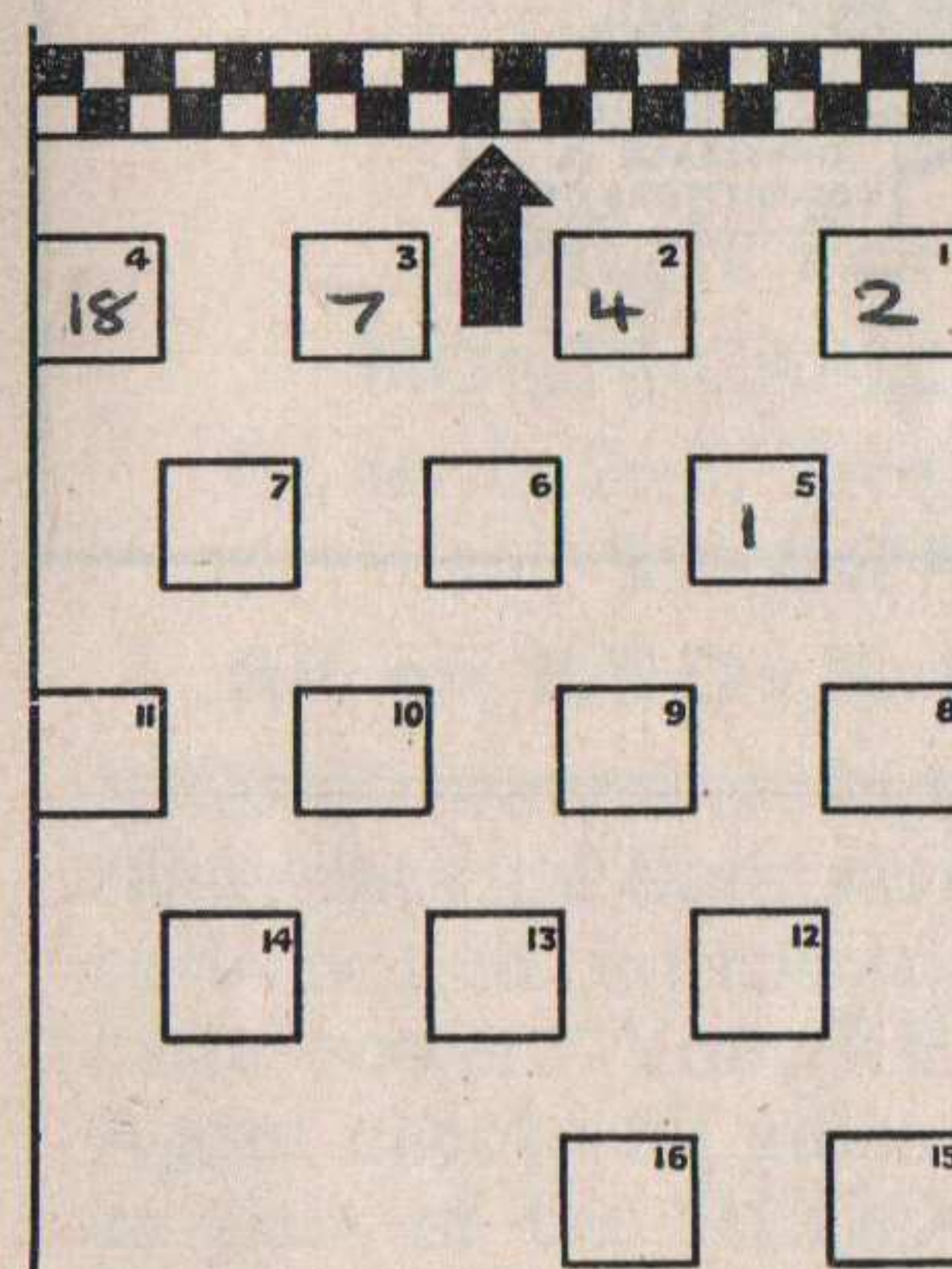
10 LAPS

## The Crystal Palace Trophy Race Final

The starters will be announced by loudspeaker.

The first six from each heat are eligible.

No.	Driver	Car	Time in Heat	
			mins.	secs.
3	1 D. B. BEAUMAN	CONNAUGHT	11-43	4
1	2 R. PARNELL	FERRARI	11-26	6
9	3 C. D. BOULTON	CONNAUGHT		
2	4 P. J. COLLINS	CONNAUGHT	11-31	8
4	5 W. J. WHITEHOUSE	CONNAUGHT		
7	6 M. F. YOUNG	CONNAUGHT		
5	7 R. Y. NUCKEY	COOPER-BRISTOL		
8	11 P. R. EMERY	EMERYSON		
RET.	14 E. N. WHITEAWAY	H.W.M.		
RET.	15 J. E. G. FAIRMAN	TURNER		
RET.	18 L. LESTON	COOPER-J.A.P.		
6	20 H. GOULD	COOPER-BRISTOL		



LAPS	LEADERS				
	1ST	2ND	3RD	4TH	5TH
1	2	13	7	4	20
2	2	4	7	20	15
3	2	4	7	20	1
4	2	4	7	20	1
5	2	4	7	1	20
6	2	4	7	1	5
7	2	4	7	1	5
8	2	4	1	7	5
9	2	4	1	7	5
10	2	4	1	5	7

RESULT

1st. PARNELL 2nd. COLLINS 3rd. BEAUMAN 4th. WHITEHOUSE 5th. NUCKEY 6th. GOULD

Winner's speed... 72.94... m.p.h. Fastest lap: No. 2 Speed... 74.69... m.p.h.

11-26.6

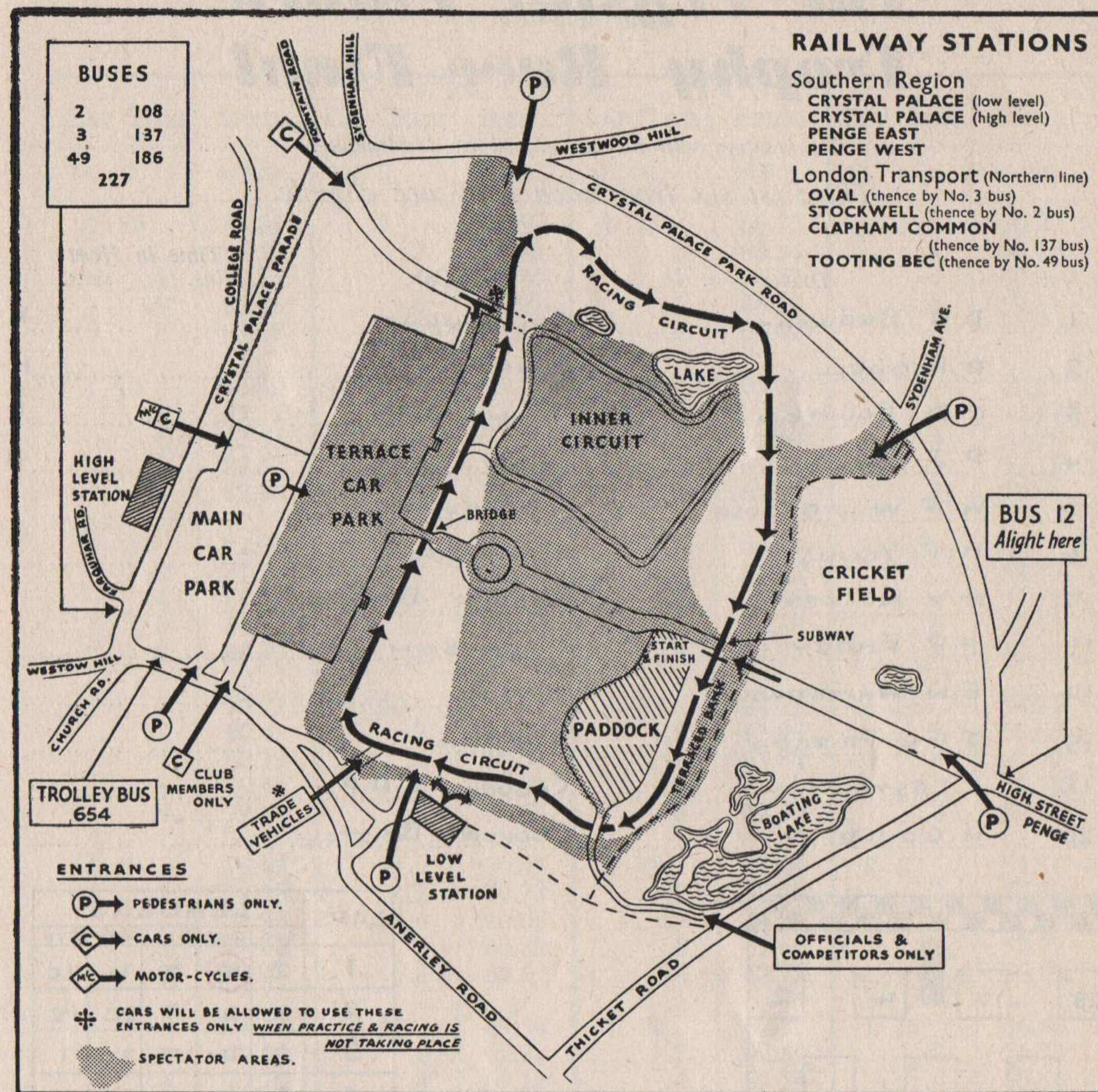
23

R. PARNELL 1-7.0

EQUALS CIRCUIT LAP RECORD.



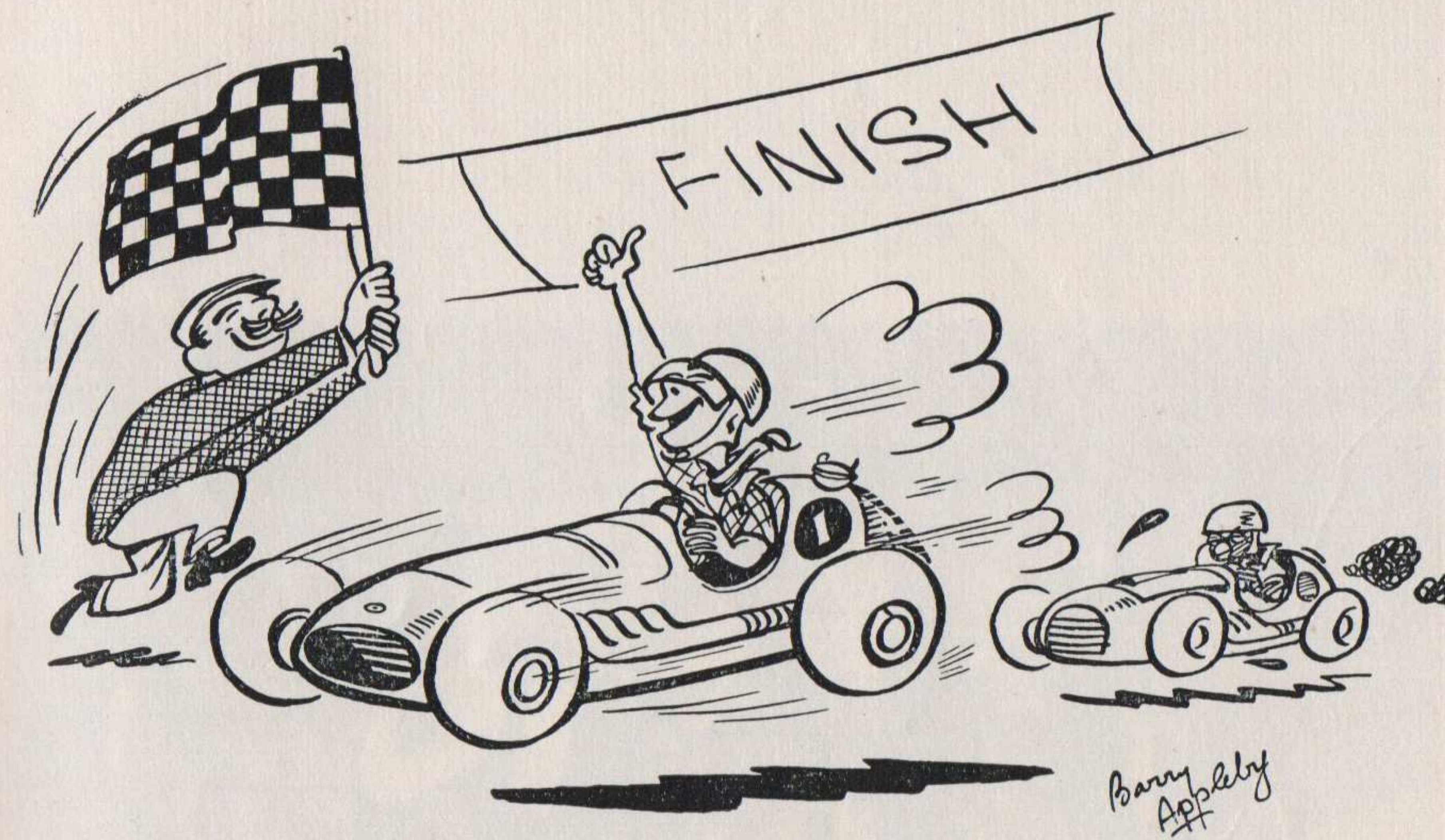
# Crystal Palace Travel Facilities



## FLAGS

The following signals will be given in to-day's races:

**NATIONAL FLAG**—Start. **RED**—Stop (all drivers). **BLACK** (with number)—That driver to stop. **BLUE**—Give way to driver about to pass you. **YELLOW**—Danger, drive slowly. **GREEN**—Course clear. **CHEQUERED BLACK and WHITE**—Finish.



*I've got it— You need it!*

# REDEX

High Performance Oil & Fuel Additive

MONTE-CARLO-RALLY 1st, 2nd & 3rd (In general class).

1st in 1, 2, 3, & 4 classes. 1st, 2nd & 3rd in COUPE-DE-DAMES

WINNER R.A.C. INTERNATIONAL RALLY

All on RED EX in engine - gear box - rear axle and petrol.

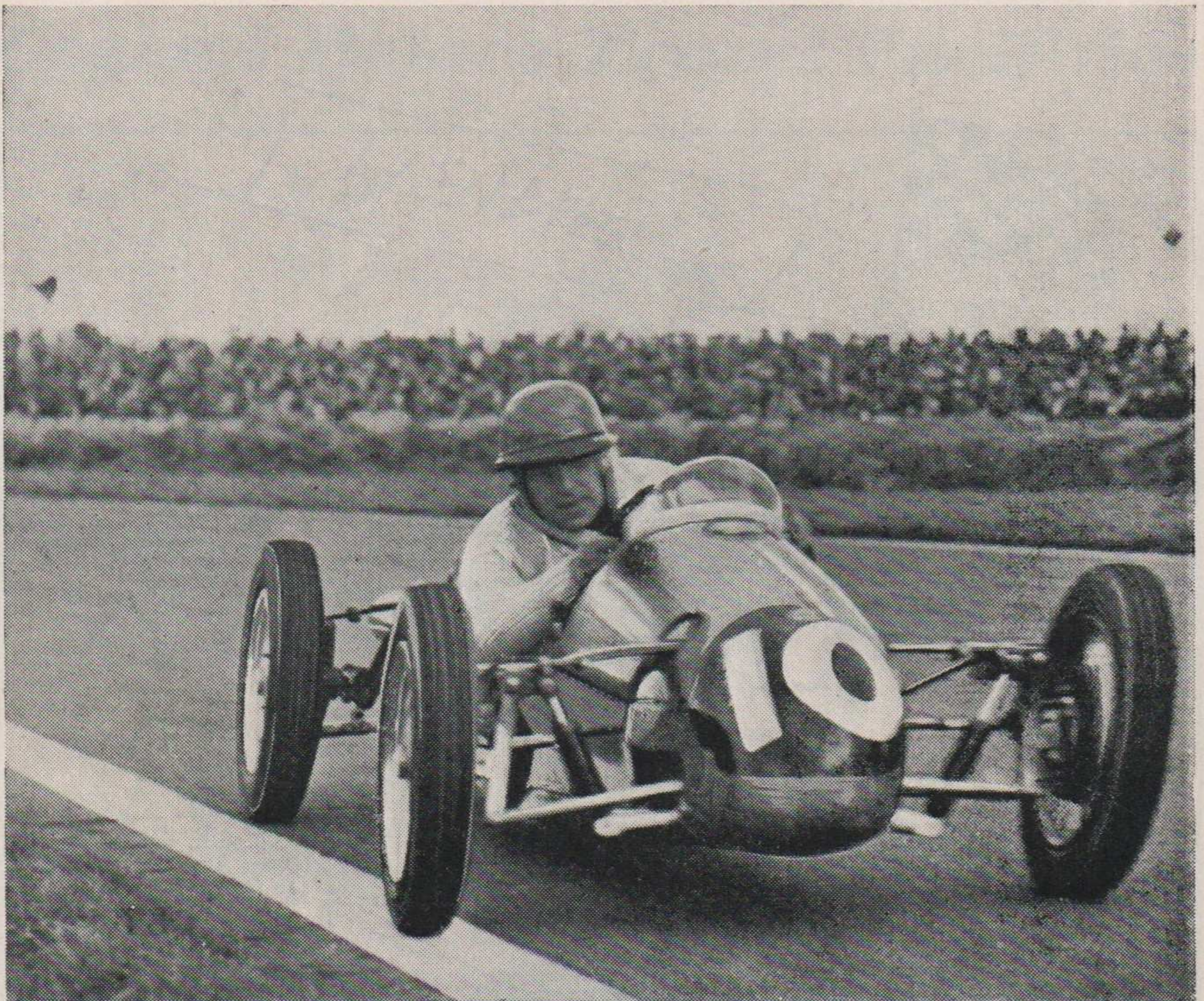
REDEX contains ingredients that strengthen oil film, save fuel, reduce carbon and corrosion and release extra power. Your RED EX Premier Agent checks all gains to a decimal as part of the RED EX Conversion Service. His Compression gauge shows flat cylinders restored to normal due to freeing of the piston rings and valves. An average of 15 per cent fuel saving is proved by test tank readings. An engine tester registers the efficiency advance and tunes the engine to its new high

power output on RED EX. Hill-climb is usually 5 m.p.h. faster and acceleration to 30 m.p.h. takes 100 to 300 ft. less distance. Important savings follow in decarbonizing and maintenance. Much less frictional heat and wear are proved by Thermotester readings. Running-in and starting troubles and battery exhaustion are eliminated. If you have not experienced these world-famous and accepted results, write for information to:

365 CHISWICK HIGH ROAD, LONDON, W.4.

TEL.: CHI 8844





## Way out in front . . .

Just like The AUTOCAR, which has held the lead in motoring journalism for nearly 60 years. It always has the most graphic and detailed descriptions of the chief sporting events, everything of interest to the enthusiast being covered just as thoroughly. There are authoritative technical articles, pages of absorbing information on touring and caravanning, searching Road Tests, an invaluable readers' buying service and an unequalled advertisement section. Share the lead with The AUTOCAR every Friday, 1s.

*The*  
***Autocar***

**gives you the whole story**