

THE ORIGINAL

HELL DRIVERS



All Performances on
Kleber
Tyres

Stitchell

THE ORIGINAL HELL DRIVERS MOTOR SHOW



Welcome to the show,

We are visiting the U.K. this summer for the first time with our 1974 production of the Original Hell Drivers Show.

The Hell Drivers have been thrilling audiences all over the world during the past 15 years. Their action has been seen by millions of people and they are acclaimed as the most proficient drivers on two wheels in the world today.

Our artistes are of many nationalities and both sexes. The girls in our show besides adding a touch of glamour are as proficient as the men in their particular skills.

All the vehicles are stock standard machines, only the two wheel balancing vehicles have a "locked" rear end. (differential). The artistes performing this evening have all undergone years of practice and training to come up to the standards you will see this evening. Please don't try any of the stunts yourself without proper supervision. Motor cars are dangerous machines and not to be mishandled.

We thank you for coming and hope you enjoy the show.

Come again,

Auf Wiedersehn.

Lenhardt Bossle.
Director

Offices

Bergerstrasse 98, Dinslaken, West Germany. 02134 90883
&

P.O. Box 5330, 77300 Fagesta, Sweden. 0223-54091.
ENGLAND: 061-368 1156.

Director Lenhardt Bossle
Show Manager John Waterhouse

The Hell Drivers would thank the following for their assistance and kindness in organising this tour,

Kleber Tyres Ltd., Opel Motor Company Ltd., W.E. Berry (Printers) Ltd., George Burrows (INSI) Ltd., Lyons Maid Ice Cream, also their distributors and agents throughout Great Britain.



BICYCLE JUMP





CHARIOT CHASE



EVENTS

Grand Parade

Introduction of tonight's Artists

One Car Hell Driving
Joe Williams

Two cars precision Driving.
Monti Bossle & Charly Roy.

Firewall Motor cycle crash.
Jonny Lee.

Clown "Firewall crash".
Lulu.

Roman Chariot Chase.
Riders: Julia Winters & Wilma King.
& Brigitta Larson.

Slide for Life.
Peter Schmidt.

Clown comedy "slide".
Lulu

Three cars precision driving.
Joe Williams, Charly Roy &
Monti Bossle.

Cycle Leap of the whole cast.
Monti Bossle, Jonny Lee &
Brigitta Larson.

"Lulus" motor cycle leap.

The famous two wheel drive.
Monti Bossle, Jonny Lee &
Joe Williams.

Attempted balance on sides of cars
whilst on two wheels.
Carola Williams, Julia Winters &
Brigitta Larson.

INTERMISSION

Motor cycle leap over cars.
Monti Bossle.

Roll over crash.
Jonny Lee.

Lulus funny car.

Motor car fire wall crash.
Carola Williams & Maria Glen.

Reverse Spins.
Joe Williams.

World famous T. Bone Crash.
Peter Schmidt.

Ramp to Ramp leap.
Joe Williams.

Finale.

All acts are subject to local track conditions.
The management reserve the right to alter or change the order of events.

Master of Ceremonies Vic Kish



THE GIRLS

Somewhat an unusual occupation for a girl being a Hell Driver. However the girls in the show tonight add more than just a touch of glamour.

Carola Williams has been touring most of her life with various displays. She is 24 years old and loves her work. She is partially deaf from an injury sustained a few years ago when she fell from a car on two wheels.

Briggitta Larson. Swedish girl 22 years old and with the troupe for two years. Briggitta is a motor cycle fiend and enjoys every minute of her work.

Wilma King. The youngest female member of the troupe at 17 years. She is learning the tricks of her trade and willing to try anything.

Julia Winters has a good sense of balance — very important when you have to balance on the side of a motor car every night of your life.



AND BOYS

Joe Williams, the veteran of the show, has made many movies. A stuntman for twelve years and before a high-wire acrobat.

Monti Bossle. 21 years of age and proficient in the art of two wheel driving. Monti also rides motor cycle.

Charly Roy. Besides being one of the Hell Drivers Charly is also responsible for keeping the cars in good repair. He is also an expert crashman and road safety expert.

Jonny Lee. The youngest man in the world to drive a motor car on two wheels. Jonny now 17 years old has been performing for the past two years in the show.

Peter Schmidt. Expert crashman and performing the slide for a life. One of the German members of the troupe.



Opel.

German engineering at its best.

The first Opel was built in 1898.

In 1928, when Fritz von Opel drove his gunpowder-propelled rocket car at an amazing 130 mph, Opel sold more cars in Germany than any other manufacturer.

In 1973, again, Opel were No. 1 in Germany. With a range of cars epitomising all the qualities of German engineering at its best: a perfect alliance of refined engineering, and superb comfort.

It's something you'll appreciate the minute you sit in an Opel.

The car 'feels right' immediately, with all controls and switches readily accessible, and seats which give excellent support and a wide range of adjustment.

It includes having as standard many things that other cars have only as an option. For example, standard equipment on all the cars shown includes front disc brakes with a dual-circuit hydraulic system, wide radial tyres, cigar lighter, electric windscreen wash, electrically-heated rear window, emergency flashers, reversing lights, and an illuminated engine and luggage compartment.

It continues with the engines, designed to give an excellent power-to-weight ratio, which in turn means more flexibility, less gear changing, more economy.

And it also comes from the handling of the cars, which always wins praise. For example, *Motor*: 'We have repeatedly praised the handling and roadholding of the current breed of Opels, and that of the (Ascona) 1900 SR is almost beyond criticism.' An Opel goes where you point it, when you point it - which again means that you can drive far more smoothly, comfortably and economically.

Now, more than ever, when you choose a car you expect it to live up to its promise.

And after you've driven one you'll realise that, in every way, that's exactly what an Opel does.

There are over 180 UK Opel Sales and Service Centres. For more information, please ask the operator for FREEFONE 2114 (there is no charge for this call) or telephone 01-397 6318/9.

We will send you the name of your nearest dealer, a complete price list and brochures on the models which interest you.

OPEL 
German engineering at its best

Kadett Coupé.



Ascona 1900 SR.



Rekord.



STRAIGHT FROM THE DRIVER'S SEAT



Accept traffic laws as aids.



Don't "tailgate"—drive so close that a car passing you can't get back in the left-hand lane.



Don't be too lazy to lift your foot from the gas to the brake when you see potential danger.



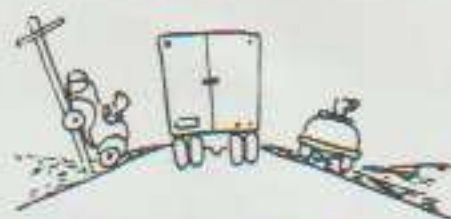
If you drive a truck, don't try to keep the same pace as other vehicles.



Park all your personal problems at the kerb before driving.



Gear the miles you cover and your driving to existing traffic.



Be conscious of your truck's position on the highway.



Drive defensively. Assume that the other driver is going to do something foolish.



Try to go the second mile in courtesy—remember the three C's of safe driving: care, courtesy and common sense.



Never fight sleep AT the wheel—surrender to it OFF the road.



Never debate the right-of-way—give it.



Don't "overdrive" your lights and brakes.



Know the condition of your truck or automobile.



Remember that your vehicle will do as you bid only if you are the master.



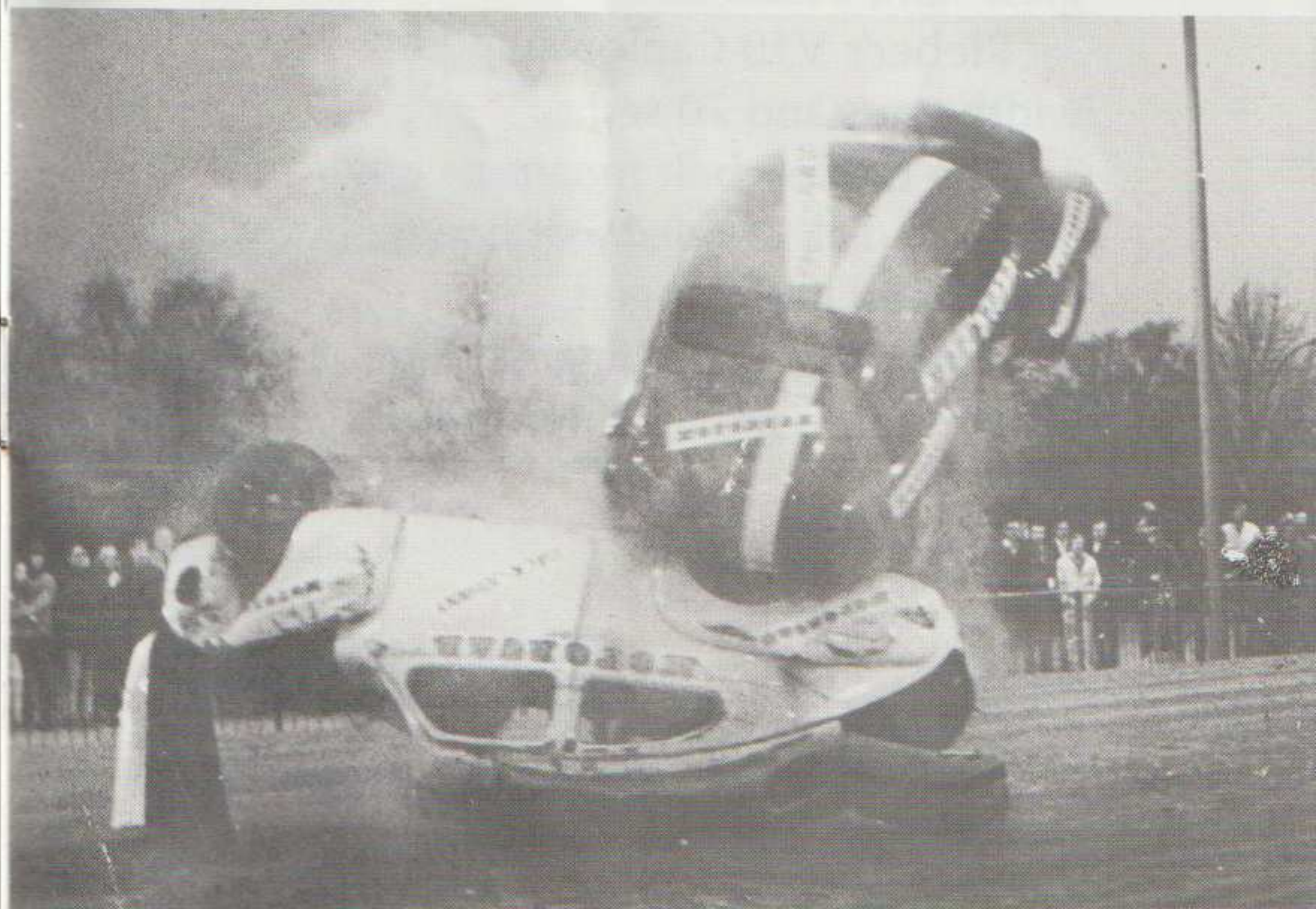
If you must stop on a highway, stop OFF it.



Remember that PATIENCE goes a long way toward safety.



T-BONE



"The Hell Drivers have always used Opels. We find them tough, beautifully responsive and completely dependable. Quite simply of all the cars we tried, we found Opels to be the best."

Joe Williams, Team Leader.



German engineering at its best

The Cablon radials.



The first-ever radial tyres with a glass-fibre based belt.

Kleber's V10 Cablon standard width tyres and 70 series.

The Cablon belt means a cooler, lighter radial. A radial that handles crisply and lives longer.

A tyre that's the biggest thing to happen to radials since radials.

*Kleber V10 radial tyres were chosen by the Original Helldrivers as standard equipment on all the cars they use.

Kleber

The French revolution in tyres.