

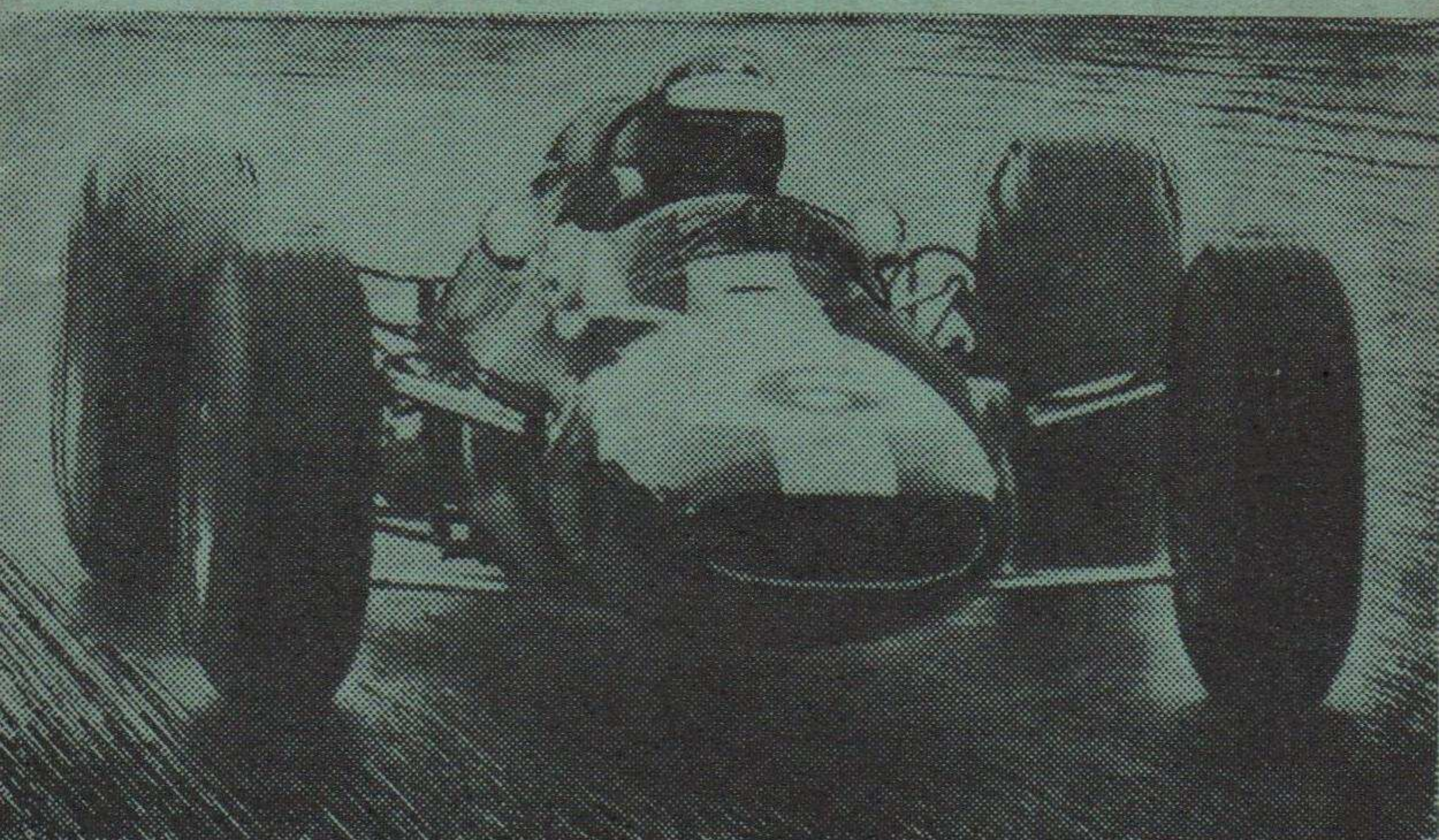
1964

INTERNATIONAL

GOLD CUP

MEETING

FOR FORMULA II CARS



SPONSORED BY THE

DAILY EXPRESS

RACING ORGANISED BY THE MID-CHESHIRE M.C.

supported by

FORMULA III AND SALOON CAR RACES

OULTON PARK

SAT · SEPT · 19

1st RACE 2 p.m. — GOLD CUP RACE 3.10 p.m.

PROGRAMME

2 p.m. Formula III race.

**3-10 p.m. International Gold Cup
Race for Formula II cars.**

5 p.m. Saloon Car Race.

5-35 p.m. Approximate finish.

Racing organised by the Mid-Cheshire Motor Club

THE GOLD CUP

A promoter's responsibility is to provide an exciting programme of events for spectators who flock to see the Gold Cup Race. This year Formula II racing with the world's leading drivers participating will be the main event.

Formula II events have brought the closest and most exciting racing seen for a number of years, with seconds separating the first six, even after 150 miles. The first International Formula II Race will take place at Oulton Park on Saturday, September 19th over 40 laps of 115 miles. Half the field will be continental entries matched against **JIM CLARK, JACK BRABHAM, GRAHAM HILL, DENIS HULME** and many other well known drivers.

In the supporting races Formula III champion **JACKIE STEWART** will be trying to keep his unbeaten record. The last race will be a saloon car race, always popular at Oulton Park, where the Cortinas could give the Galaxies a shock.

The start for the exciting and popular programme of motor car racing has been set for 2-0 p.m. so that everyone will be able to get to the track in comfort and see the whole promotion.

Practice will take place on Friday, September 18th from 10-0 a.m. to 5-0 p.m.—admission 2/6d.

The pre-booking form which is attached to this folder will save you considerable money and may be sent by post to Cheshire Car Circuit Ltd., 29, Eastgate Row North, Chester, or may be presented in person at the above address, or at any of the Ticket Bureaux at Lewis's Ltd., in Liverpool, Manchester, Birmingham, Leicester, Leeds, Hanley (Stoke-on-Trent), Sports Motors Ltd., 185 Oxford Road, Manchester or the Daily Express, Great Ancoats Street, Manchester.

PUBLIC SERVICES

The Crosville Motor Services will operate a bus service from Chester (Delamere Street) and from Crewe to Oulton Park, and particulars can be obtained by letter to them at Crane Wharf, P.O. Box 15, Chester, or by telephone—Chester 24151.

The North Western Road Car Co. Ltd. operates a network of services from Manchester, Macclesfield, Warrington and Altrincham to Northwich (6 miles from Oulton) and then a shuttle service from Northwich Omnibus Station to Oulton Park as traffic demands. North Western Road Car Co. Ltd. Charles Street, Stockport, telephone Stockport 2213.

ADMISSION DETAILS

All gates open from 8 a.m.—Bailey Bridge open all night

INDIVIDUAL ADMISSION TICKETS OF 10/- ARE NOT BOOKABLE IN ADVANCE EXCEPT TO PARTIES OF TEN AND OVER

NOT BOOKABLE

Adults 10/- Children 2/6 (up to 14 years)

Terraces (Old Hall, Lodge, Knickerbrook and Clay Hill)

Adults 5/- Children 5/-

Individual car parks except to Stand patrons

BOOKABLE IN ADVANCE

	<i>In Advance</i>
PIT GRANDSTAND — (includes admission) No reduction for children	22/6
STEWARDS ENCLOSURE— (includes admission & Paddock) ...	22/6
LODGE CORNER PAVILION— (includes admission)	12/6
PADDOCK TRANSFER— (Only sold to holders of combined admission and parking tickets)	10/-

COMBINED ADMISSION AND PARKING

	<i>In Advance</i>	<i>On Day</i>
Car and Driver	17/6	20/-
Motor Cycle and Driver	10/-	12/6
Additional passengers	7/6	10/-
Children under 14 years	2/6	2/6
Parties of 10 and over—per person	7/6	10/-
BLUE CAR PARK—(to Stand patrons only)	7/6	10/-

PRIORITY BOOKING FORM GOLD CUP MEETING Saturday, September 19th 1964

To :—CHESHIRE CAR CIRCUIT LTD.
29, EASTGATE ROW NORTH, CHESTER.

Please forward tickets as indicated :—

<u>PIT GRANDSTAND</u>	£ s. d.
.....Reserved seat including admission to Course	22/6.....
.....Blue car park available to above	7/6.....

STEWARDS ENCLOSURE

.....Admission, Paddock & Stewards Enclosure, lunch available from 12 noon, licensed bar, uncovered terrace	22/6.....
.....Car park for above—RED	7/6.....

LODGE CORNER PAVILION

.....Admission, Lodge Corner Pavilion Bar and Snack Bar	12/6.....
.....RED or BLUE car park	7/6.....

COMBINED ADMISSION AND PARKING

<u>Please indicate RED or GREEN route</u>	
.....Car and Driver	17/6.....
.....Motor Cycle and Driver	10/-.....
.....Additional passengers	7/6.....
.....Children under 14 years	2/6.....

PADDOCK TRANSFERS

.....Holders of above tickets only	10/-.....
SPECIAL PARTIES OF 10 AND OVER (BUS COMPANIES ETC.)	
.....ADMISSION	7/6.....
.....Coach parking—Free

TOTAL

PLEASE ENCLOSE A STAMPED ADDRESSED ENVELOPE

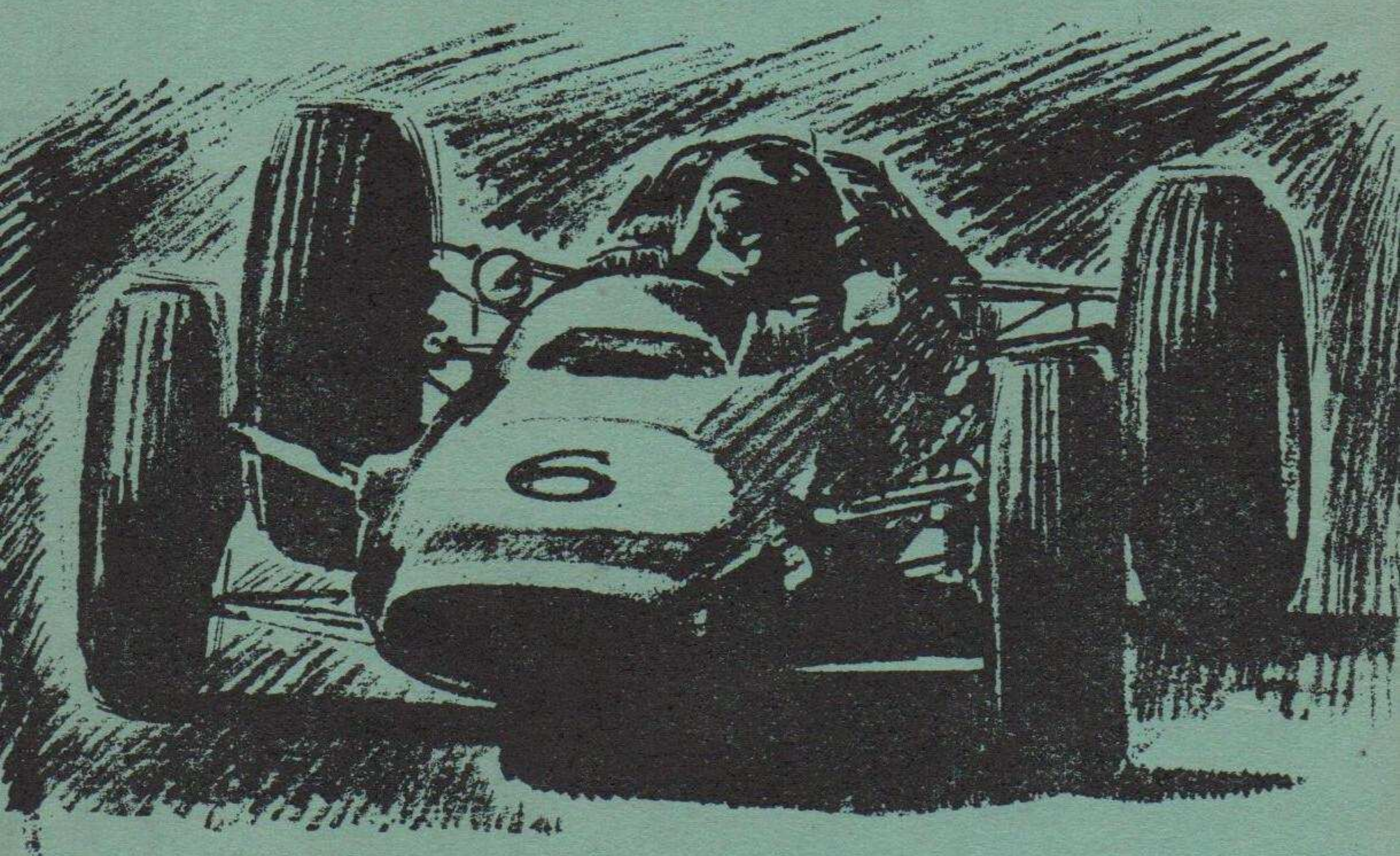
Cheques should be made payable to Cheshire Car Circuit Ltd. and crossed " & Co. "

NAME.....

ADDRESS

NOTE.—Combined admission and parking tickets and paddock transfers may be obtained by personal application from Lewis's Ltd. Travel Bureaux at Liverpool, Manchester, Birmingham, Leicester, Leeds, and Hanley (Stoke-on-Trent). Sports Motors Ltd., 185, Oxford Road, Manchester, or the Daily Express, Great Ancoats Street, Manchester.

FROM START
TO FINISH



READ THE

**DAILY
EXPRESS**

FOR THE

BEST REPORTS

OULTON PARK CIRCUIT

