

OFFICIAL PROGRAMME 2/6

# SNETTERTON

**norfolk  
trophy races**

**SUNDAY**

**21 MARCH, 1965**

ORGANISED BY THE BRITISH RACING & SPORTS  
CAR CLUB FOR SNETTERTON CIRCUIT LTD.



# Autocar

FIRST AWAY AND ALWAYS AHEAD - FRIDAY 1s.6d.



TAKE HOME A  
**CIRCUIT SOUVENIR**

AVAILABLE TODAY FROM THE CIRCUIT OFFICE  
NEAR THE CLUB HOUSE IN THE PADDOCK

Coloured transfers of circuit emblems suitable for cars, motor cycles, crash helmets, etc. .. ..	1s. 0d.
Plastic triangular car window pennants with circuit map .. .. .	6d.
Hanging cloth window pennants with circuit map ..	3s. 6d.
Metal lapel badges of circuit emblems .. ..	2s. 6d.
Metal car badges incorporating circuit map .. ..	17s. 6d.
Chequered pencils with circuit name .. ..	7d.
Gold-edged glass dishes (or ashtrays) with circuit emblem .. .. .	6s. 0d.
Enamelled black and gold circuit map cuff links ..	15s. 0d.
"      "      "      "      circuit key rings .. ..	10s. 0d.
"      "      "      "      circuit fob brooches ..	10s. 0d.
"      "      "      "      circuit tie clips .. ..	10s. 0d.
Black and white circuit map book matches, 2d. each or box of 50	8s. 4d.
Self-adhesive coloured cloth badges of circuit emblem .. .. .	3s. 0d.
Gold-edged glasses with circuit emblem:	
Whisky .. .. .	4s. 0d.
Lager .. .. .	5s. 0d.
Gin .. .. .	5s. 0d.
Lemonade .. .. .	4s. 0d.

**Most goods can be posted for an additional charge of 6d.  
Car badges and ashtrays 1s. Glasses 1s. 6d.**

**MOTOR RACING**

**MARCH 21st, 1965**

# SNETTERTON

*Held under the International Sporting Code, the General Competition Rules and Standing Supplementary Regulations of the Royal Automobile Club, and Supplementary Regulations.*  
R.A.C. Permit Number: R.S. 1213

## Officials:

### STEWARDS:

**For the R.A.C.**  
J. Holmes

**For the B.R.S.C.C.**  
S. J. Boshier  
B. H. Lister  
J. Sarginson

### JUDGES:

R. Rayner  
D. Wilkinson  
B. L. Mitcham

### CLERK OF THE COURSE:

Cmdr. P. Heseltine

### SECRETARY OF THE MEETING:

Mrs. Jean Aley

### CHIEF TIMEKEEPER:

F. Lowe

### CHIEF SCRUTINEER:

H. J. Rilett

### COMMENTATORS:

W. B. Barlow  
P. H. Wren

### CHIEF MARSHAL:

P. Lacey

### STARTER:

A. G. C. Tompkins

### MEDICAL OFFICERS:

Dr. F. Williams  
Dr. K. Knowles

### MEDICAL SERVICES:

St. John Ambulance Brigade

### PRESS OFFICER:

P. J. Corp

### BREAKDOWN VEHICLES:

Kindly supplied by:  
Edmondsons  
Smiths of Attleborough  
Boshier (Norwich) Ltd.

### MARSHALS:

Members of B.R.S.C.C., B.M.R.M.C.  
and S.M.R.C. to whom the organisers  
wish to extend their thanks.



## For the attention of spectators

**Vehicles.**—Vehicles are taken into the Car Park on condition that the Club shall not be liable for loss of or damage to the vehicle, or of or to any part or accessory therefor, or of or to any animal or thing left in or about or with the vehicle in whatever way or by whatever means such loss or damage may be caused.

**Dogs not admitted.**—In the interests of safety of human lives, spectators and competitors, DOGS are NOT permitted within the area of the Snetterton Circuit.

**Prohibited area notices.**—The public are not permitted in the areas where these Notices are displayed. The fences are there for protection, and any person or persons found trespassing, or wilfully damaging trees, fences, etc., will be prosecuted.

**Litter.**—Please do not leave litter about the grounds—take it with you.

**Purchasing.**—Patrons are warned not to purchase Commodities from unauthorised persons. If molested to this effect, please report to the Police or the Official Stewards.

**AFTER THE MEETING NO TRAFFIC IS PERMITTED ON THE CIRCUIT WITHOUT SPECIFIC PERMISSION OF THE CLERK-OF-THE-COURSE OR TRACK MANAGER**

**ALL TRAFFIC SHOULD TRAVEL IN A CLOCKWISE DIRECTION**

## Flag Signals

Competitors are reminded of the meaning of the Flags which will be used by the Flag Marshals.

<b>UNION JACK</b> .. .. .	Start.
<b>RED</b> .. .. .	Stop immediately.
<b>YELLOW (Waved)</b> .. .. .	Great danger; prepare to stop.
<b>YELLOW (Motionless)</b> .. .. .	Take care; danger.
<b>BLUE (Waved)</b> .. .. .	Another competitor is trying to overtake.
<b>BLUE (Motionless)</b> .. .. .	Another competitor is following you closely.
<b>YELLOW (With Vertical Red Stripes)</b> .. .. .	Oil on the Course.
<b>WHITE</b> .. .. .	An ambulance or service car on the circuit.
<b>GREEN</b> .. .. .	Course restored to position when race started.
<b>BLACK (With Number)</b> .. .. .	Car with that number must stop.
<b>BLACK and WHITE CHEQUERED</b> .. .. .	Signal for End of Race.
<b>SPECIAL NOTICE</b> .. .. .	A car that does not stop when the Red or Black Flag is shown will render the driver of that car liable to a fine of £5.

## Snetterton Speed Table

1 Lap = 2.71 Miles

m.s.	m.p.h.	m.s.	m.p.h.	m.s.	m.p.h.	m.s.	m.p.h.	m.s.	m.p.h.
1.30	108.40	1.45	92.91	1.59	81.98	2.13	73.35	2.27	66.37
1.31	107.21	1.46	92.04	2.00	81.30	2.14	72.81	2.28	65.92
1.32	106.04	1.47	91.18	2.01	80.63	2.15	72.27	2.29	65.48
1.33	104.90	1.48	90.33	2.02	79.97	2.16	71.74	2.30	65.04
1.34	103.79	1.49	89.51	2.03	79.32	2.17	71.21	2.31	64.61
1.35	102.69	1.50	88.69	2.04	78.68	2.18	70.70	2.32	64.18
1.36	101.63	1.51	87.89	2.05	78.05	2.19	70.19	2.33	63.76
1.37	100.58	1.52	87.11	2.06	77.43	2.20	69.69	2.34	63.35
1.38	99.55	1.53	86.34	2.07	76.82	2.21	69.19	2.35	62.94
1.39	98.55	1.54	85.58	2.08	76.22	2.22	68.70	2.36	62.54
1.40	97.56	1.55	84.83	2.09	75.63	2.23	68.22	2.37	62.14
1.41	96.59	1.56	84.10	2.10	75.05	2.24	67.75	2.38	61.75
1.42	95.65	1.57	83.38	2.11	74.47	2.25	67.28	2.39	61.36
1.43	94.72	1.58	82.68	2.12	73.91	2.26	66.82	2.40	60.98
1.44	93.81								

## Acknowledgements

### SERVICES:

<b>Breakdown Services:</b>	R. C. Edmondson Ltd., Fakenham. Boshier of Norwich Ltd. E. E. Smith & Sons Ltd., Attleborough.
<b>Course Car:</b>	Ford Motor Co. Ltd.
<b>Traffic Signs:</b>	The Royal Automobile Club.
<b>Police Services:</b>	Supt. A. Cushing and the Norfolk County Constabulary.

### Conditions of Admission

**MOTOR RACING IS DANGEROUS** and spectators attending this track do so entirely at their own risk.

"It is a condition of admission that all persons having any connection with the promotion and/or organisation and/or conduct of the meeting, including the owners of the land and the drivers and owners of the vehicles and passengers in the vehicles, are absolved from all liability arising out of accidents causing damage or personal injury to spectators or ticket holders".

### Postponement of the Meeting

The Organisers reserve the right to postpone or cancel the meeting.



## Programme

- EVENT 1.** RADIO CAROLINE CHAMPIONSHIP RACE .. .. . 8 laps  
(Sports Cars complying with the Clubman's Formula)
- EVENT 2.** SALOON CAR RACE "A" .. .. . 8 laps  
(Special Saloons up to 850 c.c. and 1001 to 1300 c.c.)
- EVENT 3.** NORFOLK TROPHY RACE .. .. . 10 laps  
(Single-seater Racing Cars of unlimited engine capacity)
- EVENT 4.** REDEX CHAMPIONSHIP RACE .. .. . 8 laps  
(Grand Touring Cars)  
(Qualifying event for the Redex Grand Touring Car championship)
- EVENT 5.** GUARDS CHAMPIONSHIP RACE .. .. . 8 laps  
(Sports-racing Cars exceeding 1000 c.c.)  
(A qualifying event for Guards Sports Car championship)
- EVENT 6.** SALOON CAR RACE "B" .. .. . 8 laps  
(Special Saloons from 851 c.c. to 1000 c.c. and over 1300 c.c.)

## Awards

- EVENT 1.** 1st, 2nd and 3rd in each class—a trophy.
- EVENT 2.** 1st, 2nd and 3rd in each class—a trophy.
- EVENT 3.** 1st, 2nd and 3rd—a trophy. 1st Formula III car—a trophy.
- EVENT 4.** 1st, 2nd and 3rd in each class—a trophy.
- EVENT 5.** 1st, 2nd and 3rd in each class—a trophy.
- EVENT 6.** 1st, 2nd and 3rd in each class—a trophy.

## Starting Positions

**GRID POSITIONS IN ALL RACES WILL BE DETERMINED BY THE COMPETITORS' LAP TIMES RECORDED BY THE OFFICIAL TIME-KEEPERS DURING PRACTICE.**

## 1965 CHAMPIONSHIPS

There are qualifying events at to-day's meeting for the following Championships:—  
**REDEX GRAND TOURING CAR CHAMPIONSHIP**—sponsored by Redex Ltd., makers of Redex, the upper cylinder lubricant, and Redex Motor Oil, for all public admission Closed, Restricted and National British events at Brands Hatch, Mallory Park and Snetterton.

Competitors score, automatically, in each of four classes up to 1150 c.c., 1151 c.c. to 1600 c.c., 1601 c.c. to 2500 c.c. and over 2500 c.c., as follows:—

1st place in each class	4	points
2nd " " " "	3	"
3rd " " " "	2	"
4th " " " "	1	"

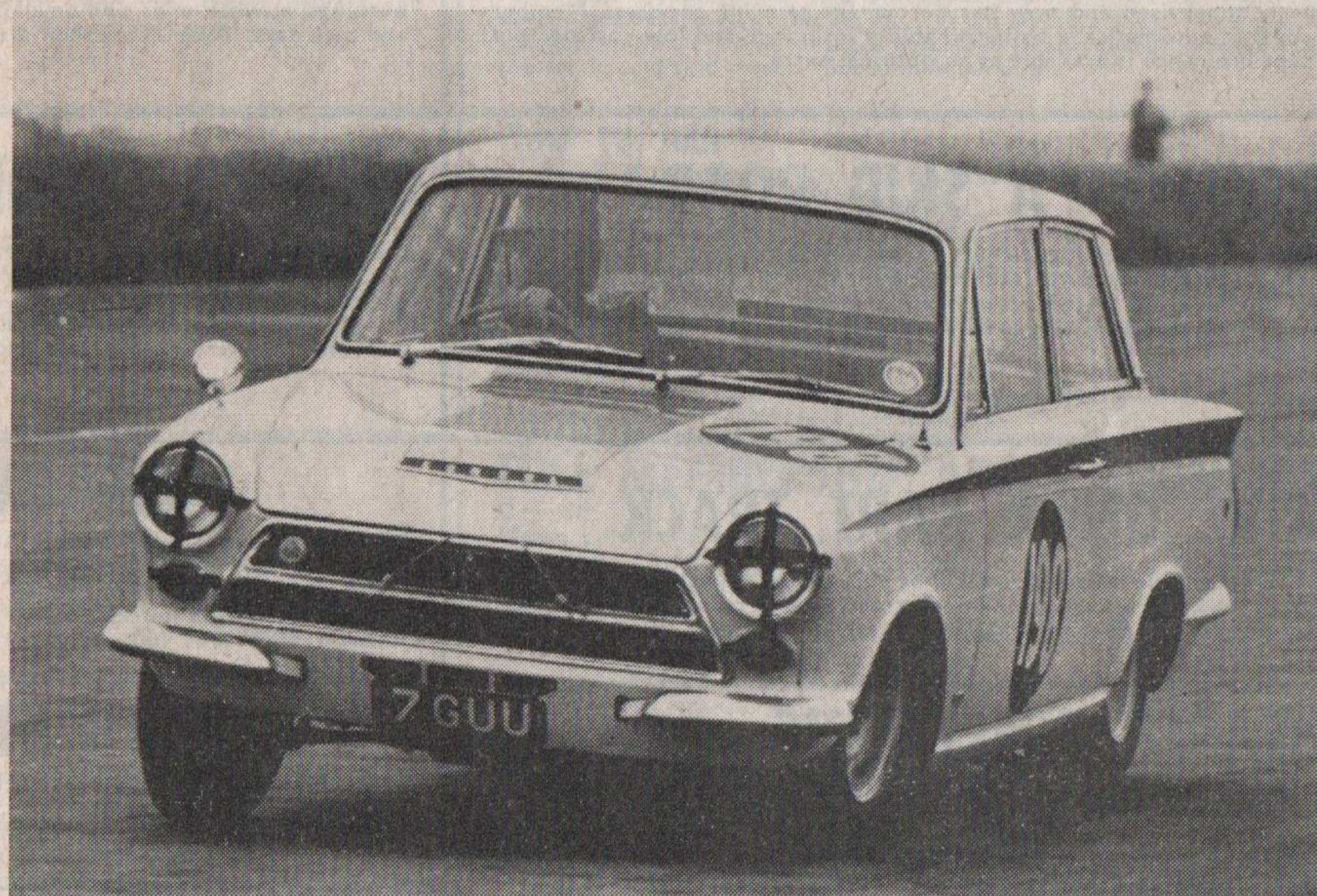
The overall winner receives £100, a trophy and a replica and the winners of each of the other three classes receive £25.

**GUARDS SPORTS CAR CHAMPIONSHIP**—sponsored by Carreras Ltd., the international cigarette company, for public admission. Closed, Restricted and National British meetings organised by the British Racing and Sports Car Club at Brands Hatch, Mallory Park, Oulton Park, Snetterton, Longleat, Rufforth and Cadwell Park. There are twenty-seven qualifying events. A competitor's best eighteen scores will count.

Competitors score, automatically, in each of two classes, under and over 1150 c.c., as follows:—

1st place in each class	4	points
2nd " " " "	3	"
3rd " " " "	2	"
4th " " " "	1	"

The overall winner on points, regardless of class, wins £100 and a silver cigarette box. The winner of the opposite class receives £50 and the runners-up in each of the two classes £25. In addition the class winners at each qualifying event receive a silver "Guardsman" replica.



Photograph by E. Gerry Stream

"By the right, right wheel!" A Lotus Cortina prepares for starboard helm



# you too can drive on a race track



**BY JOINING THE  
Brands Hatch Motor Club  
Snetterton Motor Racing Club  
Mallory Park Motor Club**



For 2 or 3 guineas a year you can experience

something new in Motor Club enjoyment

## CONSIDER THESE BENEFITS

### DRIVE ON A RACE TRACK

When you join a circuit car club you will be sent three tickets each entitling you to 20 laps driving your own silenced road car round the Brands Hatch, Snetterton and Mallory Park race tracks. All three circuits are open for this purpose on Tuesday and Thursday evenings each week during the summer, and on certain weekend days throughout the year. Each track is properly supervised and now has permanent catering services. Members are covered automatically by legal liability insurance and low-cost personal accident insurance is available as an optional extra.

### ENJOY A CIRCUIT

Close to the paddock at Brands Hatch and Snetterton, and to the hairpin at Mallory Park, members have their own modern-style motoring pubs and clubhouse. They are open every Tuesday and Thursday evenings, at week-ends, and on all practice and race days. Apart from their attractive

### CLUBHOUSE

bars, set against a background of motor badges and paintings, the clubhouses are also equipped with music and amusements. The clubhouses are also the scene of members' film shows, dances and cocktail parties in honour of racing drivers and other motoring personalities.

### JOIN TODAY Display a proud emblem

Each circuit car club has its own distinctive emblem which is reproduced on transfers, car and lapel badges, and on club ties.

### Subscription Rates

For 3 gns. a year (2 gns. if a B.R.S.C.C. member) you can enjoy all the advantages described in this leaflet. (Track membership). For 2 gns. a year you can enjoy all the advantages described in this leaflet, except drive on the tracks and skid roads. (Social membership).

### DRIVE ON A SKID ROAD

You also receive three more tickets, each entitling you to a weekend practice session on the Brands Hatch skid road, built specially for the High Performance Course of the British School of Motoring. In your own car you can spin safely on the special mastic surface through 360 degrees from only 20 m.p.h.

### MEMBER OF ONE-

Membership of any one circuit car club allows you and up to two guests to use the clubhouses at Mallory Park, Snetterton and Brands Hatch. Similarly, members of any one circuit car club are also auto-

### MEMBER OF THREE

matically members of the other two, and are entitled to exchange skid-road and race-track tickets (when applicable), to use the other facilities at concession rates, and to enjoy full clubhouse privileges.

### How to join

Complete the application form below and send it, with your remittance to:—  
The Secretary: Brands Hatch Motor Club, c/o Brands Hatch Circuit Ltd., Fawkham, Dartford, Kent. Tel.: West Ash 331  
The Secretary: Mallory Park Motor Club, c/o Mallory Park Circuit Ltd., Kirkby Mallory, Leicester. Tel.: Earl Shilton 3306  
The Secretary: Snetterton Motor Racing Club, Old Buckenham Hall, Attleborough, Norfolk. Tel.: New Buckenham 352.  
Your membership card and further details concerning track use and season brooches will be forwarded immediately.

### DRIVE ON A KART TRACK

As a circuit car club member you will be able to use, at each circuit, on prior notice, a go-kart, a kart amusement track, and a crash helmet for only 7s. 6d. per 10-lap session instead of the normal charge of 10s.

### YOUR OWN

Through the post every month you will receive a copy of "Sportscar" (post-free value 30s. a year). It will come to you not as a mere club journal, but as a lively illustrated review, full of race reports,

### MAGAZINE

road-tests and motoring personalities—all in pictures. "Sportscar" is edited by John Blunsden and Darryl Reach, part of the team that produces its lively companion journal "Motor Racing".

### FULL MEMBERSHIP APPLICATION FORM

Dear Sir,  
Please enrol me as a member of the: Brands Hatch Motor Club, The Snetterton Motor Racing Club, The Mallory Park Motor Club. Please also send me the following:—

	£	s.	d.
..... ties (green, blue, maroon) at 15s. each	..	..	..
..... lapel badges (pin) at 3s. 6d. each	..	..	..
..... car badges at £1 5s. each	..	..	..
..... 3 in. transfers at 1s. each	..	..	..
I also enclose:—			
3 gns. for twelve months track membership	..	..	..
2 gns. for twelve months social membership	..	..	..
<b>TOTAL</b>	£		

(Delete the inapplicable)

Please make your cheque payable to the club of your choice.

**NAME  
ADDRESS  
TELEPHONE NUMBER**

### CHEAPER SPECTATING

You can also purchase, at a guinea less than the public rates, low-cost car race spectator season brooches for yourself, one other male, and up to four ladies and children, at one or all of the three circuits involved. These admit your car to any public park and all brooch holders to the paddock and any normal viewing area. At Brands Hatch a season brooch costs 4 gns. for adult males, and 3 gns. only for ladies and children, compared with individual admission tickets totalling more than £16 in yearly cost. At Mallory Park and Snetterton the brooches cost 3 gns. for males and 2 gns. for ladies and children for over £9 normal value.

### DRIVE IN A

The B.R.S.C.C. now organises exclusively for members of circuit car clubs, sprint meetings at Brands Hatch, Mallory Park and Snetterton. Race meetings as such

### SPRINT

are not envisaged, as the promoters do not wish to conflict with, or undermine the excellent facilities offered by other motor-sporting clubs.

**DON'T MISS  
FACILITIES.  
LEADING MOTOR  
YOUR SOCIAL**

**THESE UNIQUE  
MAKE BRITAIN'S  
RACE-TRACKS  
RENDEZVOUS**



# EVENT 1

## RADIO CAROLINE CHAMPIONSHIP RACE

For Sports Cars complying with the Clubman's Formula  
in two classes: "A" Up to 1000 c.c.; "B" 1001 c.c. to 1500 c.c.

8 LAPS

NO. ENTRANT AND DRIVER CAR C.C. COL.

### Class "A"—Up to 1000 c.c.:

70	R. W. Smith	Lotus 7	997	R
71	J. H. Woolford	Lotus 7	997	W
72	P. W. Welstead	Lotus 7	997	B
73	Koala Racing (Dvr.: N. L. Fawcett)	Lotus 7	997	G/S
74	R. Hughes	Lotus 7	998	R
75	M. R. Street	Lotus 7	997	Blk/W
76	J. Wigglesworth	Lotus 7	997	Blk
77	A. F. Cudd	Lotus 7	997	R
78	M. P. Phillippe	Lotus 7	997	R/Y
79	P. Lange	Lotus 7	997	B/W
80	J. C. Salmon	Lotus 7	997	R/S
81	D. J. U. Lewis	U.2	997	S
82	M. J. Carter	U.2	998	G
83	North London Racing Team (Dvr.: J. Bryning)	Kay-U.2	998	R
84	E. Lewis (Dvr.: G. Lewis)	Westover U.2	998	B
85	P. R. H. Gaydon	North Star-U.2	998	B/W
86	R. P. Brind (Dvr.: Entrant or J. R. C. Wimbush)	D.R.W.	997	S
87	J. D. A. Bromilow	D.R.W.	998	M
88	R. E. Reader	Terrier	997	S
89	M. H. Gill	Terrier	997	G
90	North London Racing Team (Dvr.: A. Baillie)	Pegasus	997	R

### Class "B"—1001 c.c. to 1500 c.c.:

91	D. Goodwin	Lotus 7	1172	C/Blk
92	Team Leedspeed (Dvr.: I. A. B. Harris)	Lotus 7	1390	S/Y
93	J. G. Still	Lotus 7	1498	R/S
94	M. J. Crabtree	Lotus 7	1500	Blk
95	Len Street Engineering Ltd. (Dvr.: R. C. Lynch or A. E. Oliver)	Lotus 7	1498	Y
96	C. E. Rose-Gold	Lotus 7	1498	R
97	D. H. Preston	Lotus 7	1498	W
98	C. Sturdges	Lotus 7	1500	Y/W
99	A. T. Sandars	Lotus 7	1498	G/Y
100	C. A. Ormerod	Lotus 7	1498	G
101	I. C. Batty	Lotus 7	1500	Y
102	Team Leedspeed (Dvr.: G. R. C. Duncan)	Mallock U.2	1499	Y/G

### RESERVES:

103	Anglo-Swiss Racing Partnership (Dvr.: B. Burgess) (1st Reserve)	Lotus 7	997	G
104	R. J. Groombridge (2nd Reserve)	Centaur	998	B
105	B. Kenworthy (3rd Reserve)	Lotus 7	997	B/Y
106	F. Murray (4th Reserve)	Lotus 7	997	G

## RESULTS:

### Class "A"—Up to 1000 c.c.:

1st..... 2nd..... 3rd..... 4th..... 5th..... 6th.....

Winner's Time..... Speed..... m.p.h.

Fastest Lap: Car No..... Time..... Speed..... m.p.h.

### Class "B"—1001 c.c. to 1500 c.c.:

1st..... 2nd..... 3rd.....

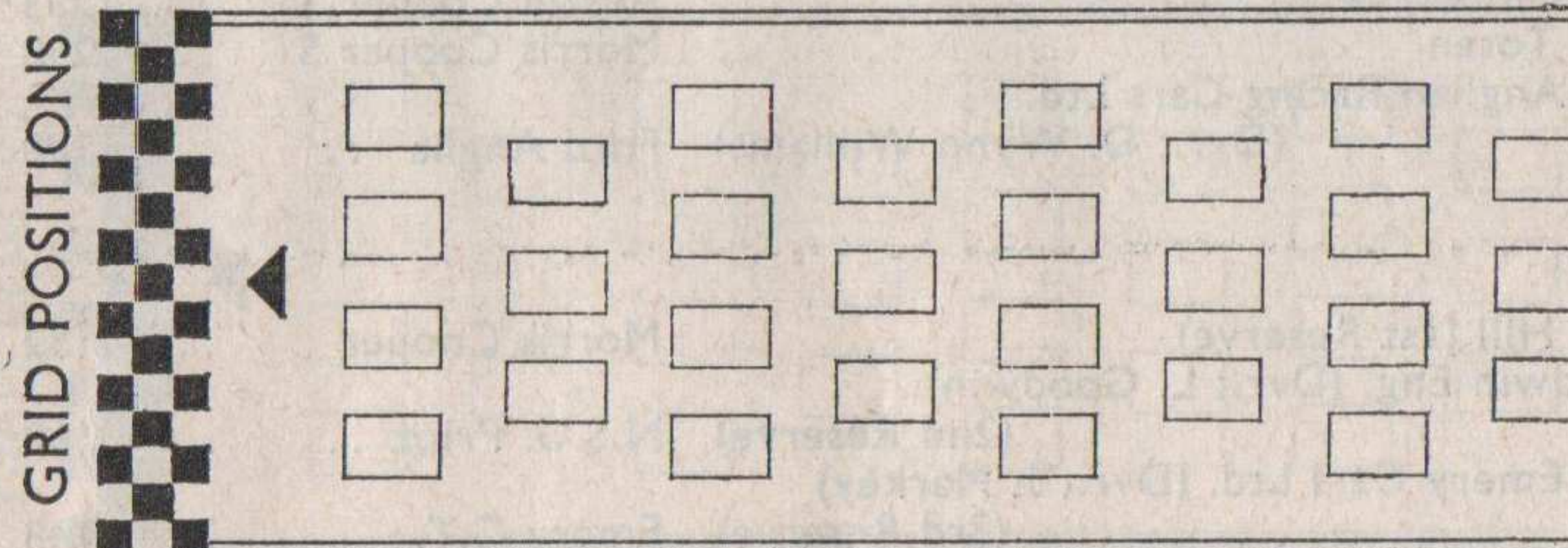
4th..... 5th..... 6th.....

Winner's Time..... Speed..... m.p.h.

Fastest Lap: Car No..... Time..... Speed..... m.p.h.

## EVENT ONE—LAP CHART

Pos. ▼	1	2	3	4	5	6	7	8
1								
2								
3								
4								
5								
6								
7								
8								
9								
10								





# EVENT 2

## SALOON CAR RACE "A"

for Special Saloon Cars in two classes:  
"A" Up to 850 c.c.; "B" 1001 c.c. to 1300 c.c.

Class "A"—Up to 850 c.c.:

8 LAPS

NO.	ENTRANT AND DRIVER	CAR	C.C.	COL.
144	P. Wilson .. .. .	B.M.W. 700 .. .. .	698	R
145	J. P. Weston .. .. .	D.K.W. Junior .. .. .	796	B/W
147	Andrew Mylius Racing (Dvr.: A. Mylius) .. .. .	SAAB Sport .. .. .	841	R
148	Radbourne Motors (Dvr.: C. Gunther) .. .. .	Fiat Abarth 850 TC .. .. .	848	W
149	Morton & Hughes (Dvr.: P. Hughes) .. .. .	Austin Mini .. .. .	848	Blk/R
150	R. J. Fox .. .. .	Austin Mini .. .. .	848	G
151	W. B. Blydenstein .. .. .	Austin Mini .. .. .	848	R
152	R. D. Bromley .. .. .	Austin Mini .. .. .	848	B
153	S. R. J. Duncan .. .. .	Austin Mini .. .. .	848	G
154	R. J. Barrett .. .. .	Austin Mini .. .. .	848	B/Blk
155	Cripspeed (Dvr.: K. Costello or R. V. Mason) .. .. .	Morris Mini .. .. .	848	G
156	Team "848" (Dvr.: R. H. Collier) .. .. .	Morris Mini .. .. .	848	R
157	P. W. H. Mason .. .. .	Morris Mini .. .. .	848	B/W
158	John Stanton Racing (Dvr.: J. Thurston) .. .. .	Morris Mini .. .. .	848	B

Class "C"—1001 c.c. to 1300 c.c.:

159	J. J. Thomas-Good .. .. .	Morris Cooper S .. .. .	1071	R/W
160	F. Jacks .. .. .	Austin Cooper S .. .. .	1098	B/W
161	C. Marshall .. .. .	Morris Cooper .. .. .	1132	B
162	D. Barsby .. .. .	Morris Cooper .. .. .	1132	G
163	Montroe Motors (N. H. Boswell) Ltd. (Dvr.: H. G. Beaumont)	Hillman Imp .. .. .	1220	B
177	Roger Nathan (Racing) Ltd. (Dvr.: R. Nathan)	Hillman Imp .. .. .	1216	B
164	T. R. Fetherstonhaugh .. .. .	Morris Cooper S .. .. .	1275	G/W
165	M. Caulton .. .. .	Austin Cooper S .. .. .	1275	Y/Blk
166	Team Speedwell (Dvr.: J. Cannadine) .. .. .	Austin Cooper S .. .. .	1275	Y/Blk
167	D. Buckett .. .. .	Austin Cooper S .. .. .	1275	Gy/W
168	Newtune (Dvr.: W. McGovern) .. .. .	Austin Cooper S .. .. .	1275	Gy/M
169	Team Taurus (Dvr.: T. C. Savory) .. .. .	Morris Cooper S .. .. .	1275	R/W
170	A. D. Laycock .. .. .	Morris Cooper S .. .. .	1275	W/Y
171	P. A. Purseglove .. .. .	Morris Cooper S .. .. .	1291	R/W
172	R. Gordon (Dvr.: C. H. Blyth) .. .. .	Austin Cooper S .. .. .	1293	G
173	D. Negus .. .. .	Morris Cooper S .. .. .	1293	Gy/W
174	C. J. Montague .. .. .	Austin Cooper S .. .. .	1293	R/Blk
175	C. J. Toten .. .. .	Morris Cooper S .. .. .	1298	R/Blk
176	East Anglian Racing Cars Ltd. (Dvr.: D. Wynn Williams)	Ford Anglia .. .. .	1298	S/R

RESERVES:

178	J. A. Hill (1st Reserve) .. .. .	Morris Cooper .. .. .	1132	Blk/Gd
219	Goodwin Eng. (Dvr.: L. Goodwin) (2nd Reserve)	N.S.U. Prinz .. .. .	660	B
220	Paul Emery Cars Ltd. (Dvr.: J. Markey) (3rd Reserve)	Emery G.T. .. .. .	1148	B/W

## RESULTS:

Class "A"—Up to 850 c.c.:

1st..... 2nd..... 3rd.....  
4th..... 5th..... 6th.....

Winner's Time..... Speed..... m.p.h.

Fastest Lap: Car No..... Time..... Speed..... m.p.h.

Class "C"—1001 c.c. to 1300 c.c.:

1st..... 2nd..... 3rd.....  
4th..... 5th..... 6th.....

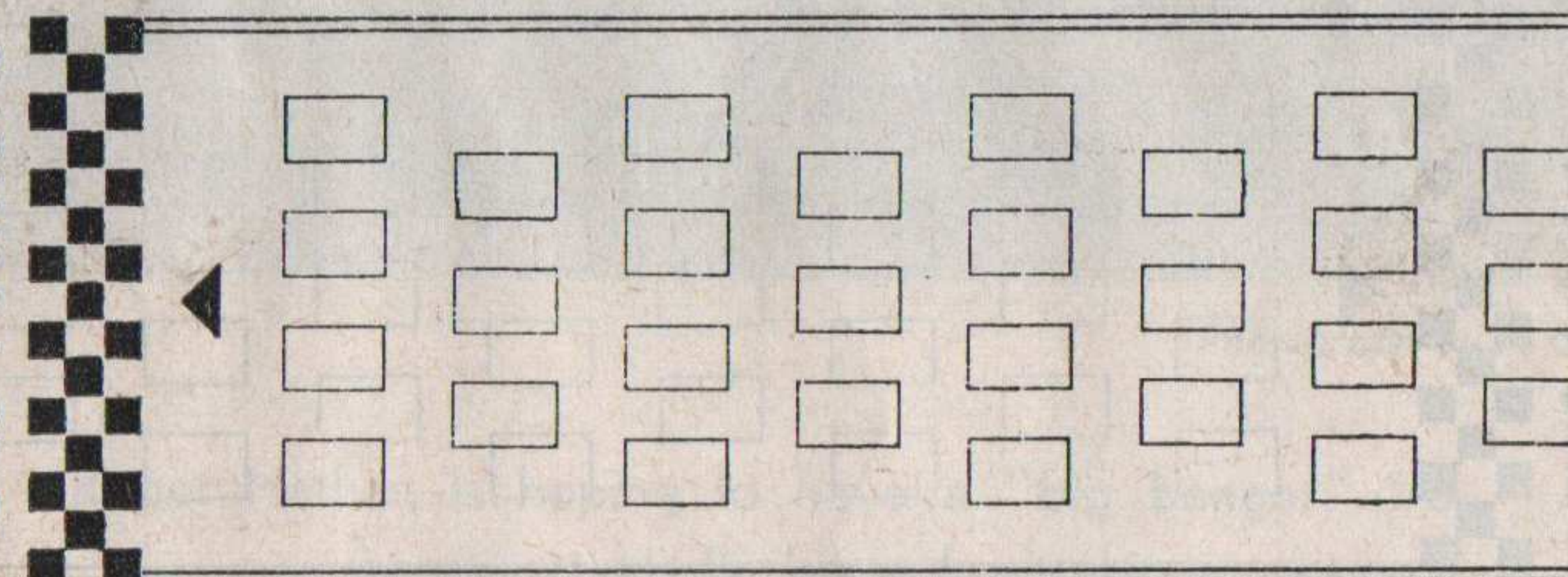
Winner's Time..... Speed..... m.p.h.

Fastest Lap: Car No..... Time..... Speed..... m.p.h.

## EVENT TWO—LAP CHART

Pos. ▼	1	2	3	4	5	6	7	8
1								
2								
3								
4								
5								
6								
7								
8								
9								
10								

GRID POSITIONS





# EVENT 3

## NORFOLK TROPHY RACE

for single-seater racing cars of unlimited engine capacity

10 LAPS

NO.	ENTRANT AND DRIVER	CAR	C.C.	COL.
1	Ansty Garage (Dvr.: C. Summers) .. ..	Lotus Chevrolet ..	4900	G
2	Ansty Garage (Dvr.: J. Macartney-Filgate) ..	Cooper Chevrolet ..	4900	G
3	J. Moore .. .. .	Cooper Lotus ..	1598	R
4	J. Ewer .. .. .	Brabham Ford ..	1598	R
5	Aylesbury Tuning Co. (Dvr.: G. Vanaria) ..	Lotus B.M.C. 22 ..	988	G
6	Frank Lythgoe Racing (Dvr.: A. R. Wyllie) ..	Lotus Ford 31 ..	998	B
7	Wm. Stein & Co. Ltd. (Dvr.: W. J. Stein) ..	Lotus Ford ..	997	B
8	J.R.R.D.S. (Dvr.: J. Roberts) .. ..	Lotus Ford 31 ..	997	Blk
9	J.R.R.D.S. (Dvr.: J. Fredericks) .. ..	Lotus Ford 31 ..	997	W
10	J.R.R.D.S. (Dvr.: M. Payne) .. ..	Lotus Ford 31 ..	997	G
11	J.R.R.D.S. (Dvr.: J. Simpson) .. ..	Lotus Ford 31 ..	997	G
12	J.R.R.D.S. (Dvr.: J. Peake) .. ..	Lotus Ford 31 ..	997	B
14	J.R.R.D.S. (Dvr.: M. Grant) .. ..	Lotus Ford 31 ..	997	G
15	J.R.R.D.S. (Dvr.: M. Long) .. ..	Lotus Ford 27 ..	997	G
16	J.R.R.D.S. (Dvr.: D. Bunce) .. ..	Lotus Ford 20 ..	997	R
17	J.R.R.D.S. (Dvr.: P. Wilson) .. ..	Lotus Ford 20 ..	997	G
18	J.R.R.D.S. (Dvr.: A. Sneddon) .. ..	Lotus Ford 20 ..	997	G
19	J.R.R.D.S. (Dvr.: F. Wiedaman) .. ..	Lotus Ford 20 ..	997	B
20	J.R.R.D.S. (Dvr.: Miss J. Hedderley) ..	Lotus Ford 20 ..	997	G
21	J.R.R.D.S. (Dvr.: D. Bicheno) .. ..	Lotus Ford 20 ..	997	G
22	J.R.R.D.S. (Dvr.: J. Price) .. ..	Lotus Ford 20 ..	997	G
23	J.R.R.D.S. (Dvr.: R. Woodward) .. ..	Lotus Ford 20 ..	997	B
24	J.R.R.D.S. (Dvr.: G. Crossman) .. ..	Cooper B.M.C. ..	997	R
25	Baldyne Eng. Ltd. (Dvr.: D. E. O'Sullivan) ..	Brabham Ford ..	998	B
26	A. G. Dean .. .. .	Brabham Ford ..	998	M
27	Stirling Moss Automobile Racing Team (Dvr.: L. Roberts)	Merlyn Ford ..	997	G
28	K. Bass .. .. .	Merlyn Ford ..	997	
29	A. O. C. Moore .. .. .	Lola Ford ..	997	G
30	B. S. Pearn (Dvr.: R. F. Pickering) .. ..	Lola Ford ..	997	G

### RESULTS:

1st..... 2nd..... 3rd.....

4th..... 5th..... 6th.....

Winner's Time..... Speed..... m.p.h.

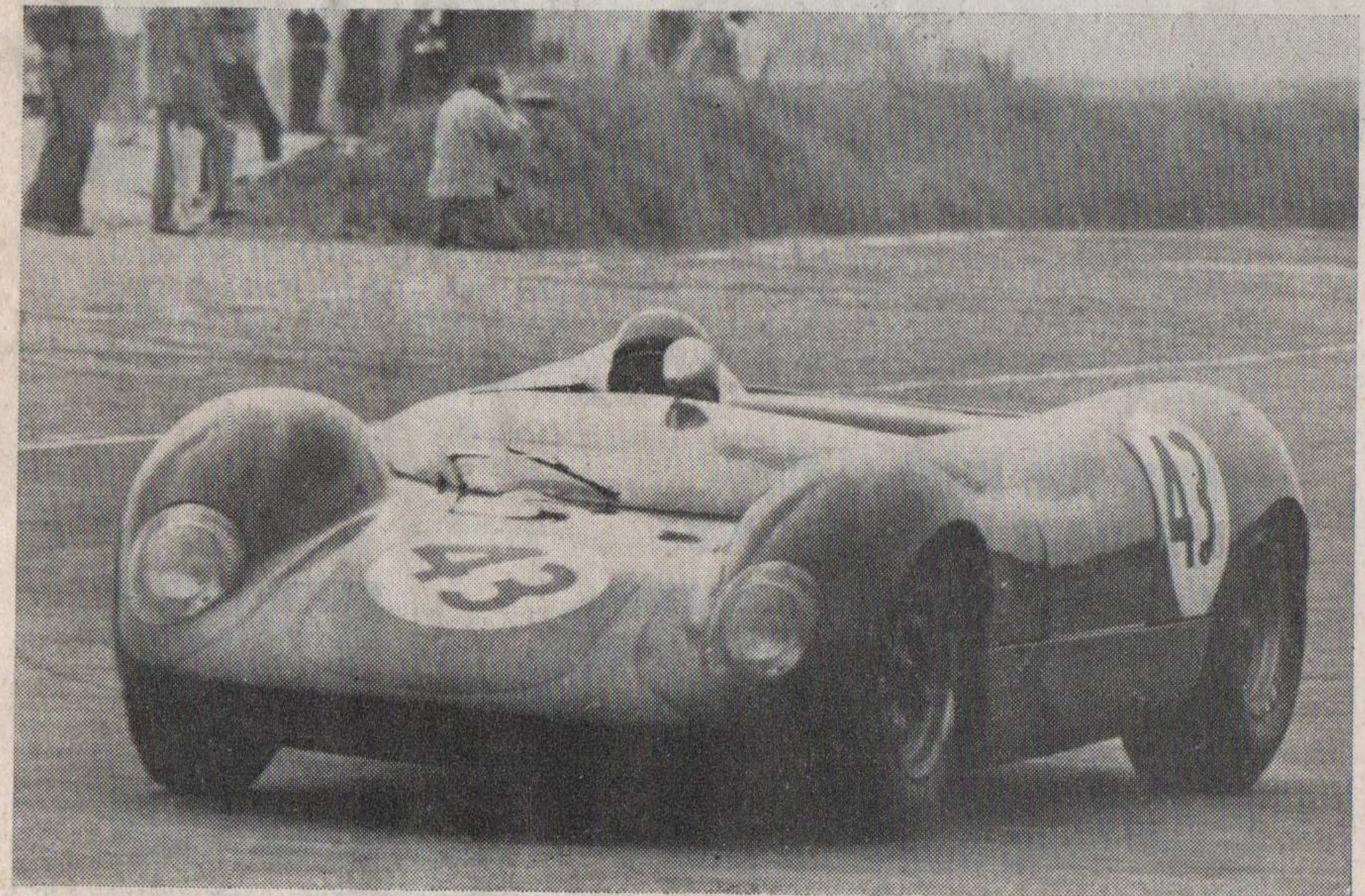
Fastest Lap: Car No..... Time..... Speed..... m.p.h.

1st Formula III Car.....

GRID POSITIONS	<input type="checkbox"/>	<input type="checkbox"/>	<input type="checkbox"/>	<input type="checkbox"/>	<input type="checkbox"/>	<input type="checkbox"/>	<input type="checkbox"/>	<input type="checkbox"/>
	<input type="checkbox"/>	<input type="checkbox"/>	<input type="checkbox"/>	<input type="checkbox"/>	<input type="checkbox"/>	<input type="checkbox"/>	<input type="checkbox"/>	<input type="checkbox"/>
	<input type="checkbox"/>	<input type="checkbox"/>	<input type="checkbox"/>	<input type="checkbox"/>	<input type="checkbox"/>	<input type="checkbox"/>	<input type="checkbox"/>	<input type="checkbox"/>
	<input type="checkbox"/>	<input type="checkbox"/>	<input type="checkbox"/>	<input type="checkbox"/>	<input type="checkbox"/>	<input type="checkbox"/>	<input type="checkbox"/>	<input type="checkbox"/>

## EVENT THREE—LAP CHART

Pos. ▼	1	2	3	4	5	6	7	8	9	10
1										
2										
3										
4										
5										
6										
7										
8										
9										
10										

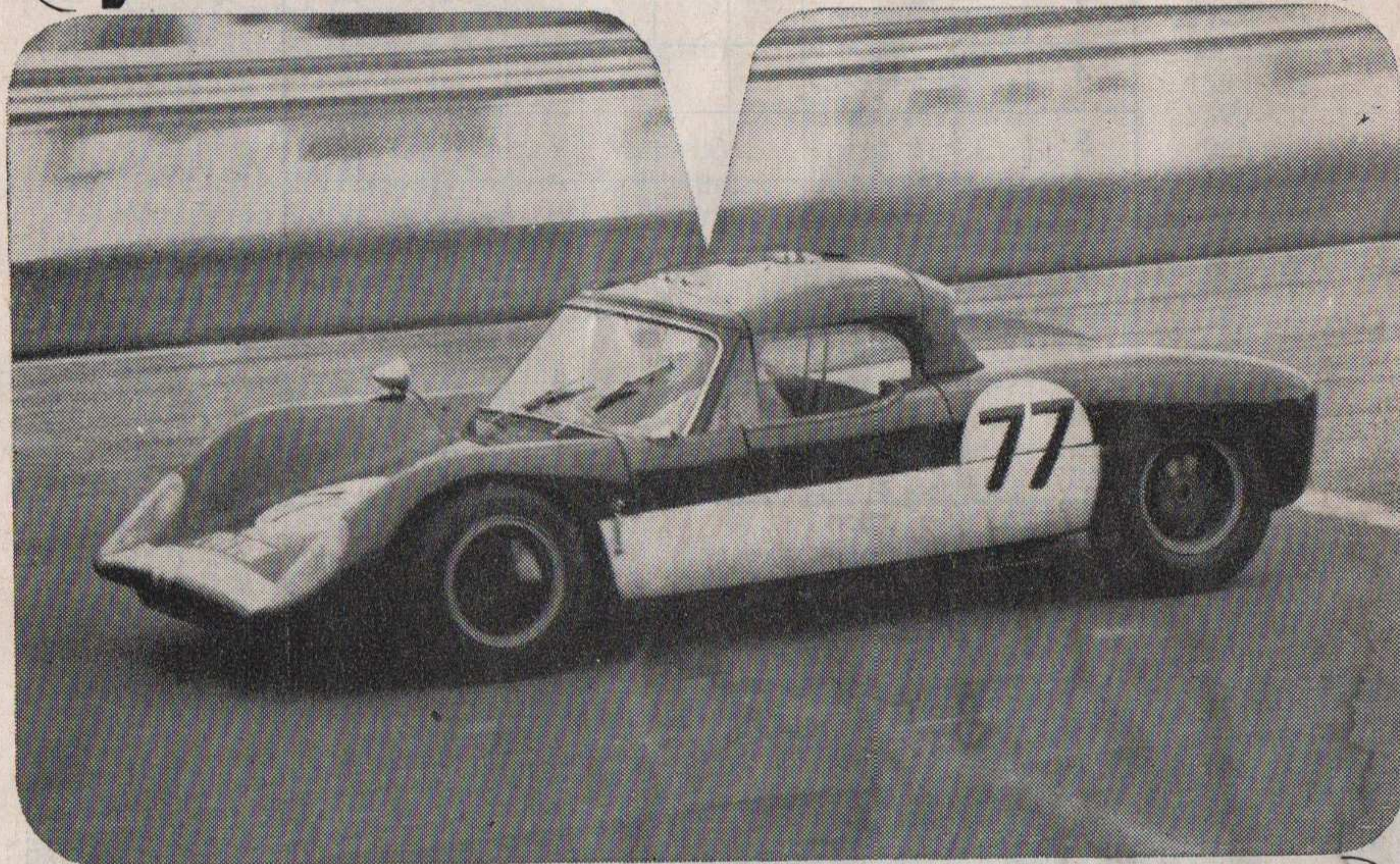


Photograph by E. Gerry Stream

Roger Nathan is hoping to have a "big banger" V8 engine in his Brabham for today



**de-coke  
daily while  
you drive!**



Today you can watch one of the qualifying events for the 1965 REDEX Grand Touring Car Championship. Last year the trophy was won by C. L. Lacey, pictured above, driving his rear-engined Merlyn-Ford sports car with special GT hard top. Lacey scored 14 points, closely followed by E. P. Falce (E-type Jaguar) and D. Mockford (Diva-Ford), with 12 points each.

**Follow the lead of the  
champions - always use**

**REDEX**

**The UPPER CYLINDER LUBRICANT that clears  
clogging carbon and frees full engine power**

REDEX is a Registered Trade Mark of REDEX Limited, 365 Chiswick High Road, London, W.4

## EVENT 4

### REDEX CHAMPIONSHIP RACE

for Special Grand Touring Cars divided into the following  
classes: "A" Up to 1150 c.c.; "B" 1151 c.c. to 1600 c.c.;  
"C" 1601 c.c. to 2500 c.c.; "D" Over 2500 c.c.

8 LAPS

#### Class "A"—Up to 1150 c.c.:

NO.	ENTRANT AND DRIVER	CAR	C.C.	COL.
107	M. J. Adams .. .. .	Austin Healey Sebring Sprite	998	R
108	R. J. Pendrey .. .. .	Austin Healey Sebring Sprite	997	R
109	Leonard Reece & Co. (Dvr.: E. Reece) ..	Austin Healey Sebring Sprite	1098	S/W
110	Morton & Hughes (Dvr.: M. Garton) ..	Austin Healey Le Mans Coupe	1098	B
111	A. W. Beeson .. .. .	Diva Ford G.T. ..	1090	B
112	M. Brandon (Dvr. Entrant or J. Samuel) ..	Diva Ford G.T. ..	1098	B
114	Team Diva (Dvr.: D. Mockford) ..	Diva Ford G.T. ..	1098	B
115	Ecurie Eagle (Dvr.: F. M. Jones Jnr.) ..	Diva Ford G.T. ..	1098	W/B
116	J. Corfield .. .. .	Diva Ford G.T. ..	1098	B/R
117	I. J. Alexander .. .. .	Diva Ford G.T. ..	1098	W
118	J. J. Brick .. .. .	Lotus XI G.T. ..	1098	B
119	A. R. Jones .. .. .	Turner Climax ..	1150	G
120	M. H. White .. .. .	M.G. Midget ..	1139	R
121	D. H. Corderoy .. .. .	Triumph Spitfire ..	1150	W

#### Class "B"—1151 to 1600 c.c.:

122	P. L. Beamish .. .. .	Lotus Elite .. ..	1216	R/B
123	Team Uptune (Dvr.: J. Sisson) ..	Ginetta Ford G.4 ..	1500	Blk/T
124	J. Edmonds .. .. .	Lotus Elan .. ..	1585	W
125	C. Gaspar .. .. .	Lotus Elan .. ..	1594	R
126	H. K. Burnard .. .. .	Lotus Elan .. ..	1594	B
127	M. Wayne .. .. .	Lotus Elan .. ..	1594	W
128	L. C. Fryer .. .. .	Lotus Elan .. ..	1594	S
129	P. Taggart .. .. .	Lotus Elan .. ..	1598	B

#### Class "C"—1601 c.c. to 2500 c.c.:

130	J. McKechnie .. .. .	Morgan 4/4 .. ..	1650	
131	J. Miles .. .. .	Diva Ford G.T. ..	1650	R
132	Team Uptune (Dvr.: B. Ellice) ..	Turner Ford G.T. ..	1650	Blk/T
133	R. Worts .. .. .	M.G. B .. .. .	1798	R
134	D. Andree .. .. .	M.G. B. .. .. .	1798	Blk/R

#### Class "D"—Over 2500 c.c.:

135	Steering Wheel (Dvr.: M. Watts) ..	Sabre Reliant .. ..	2553	B
136	R. Hill .. .. .	Austin Healey 3000 ..	2912	B
137	Taylor & Crawley (Surrey) Ltd. (Dvr.: D. Cunningham)	Jaguar XK120 .. ..	3781	W
138	R. M. Ward .. .. .	Jaguar E Type .. ..	3781	B
139	W. Pearce .. .. .	Jaguar E Type .. ..	3781	R
140	Fibre Glass Repair (Dvr.: E. P. Falce) ..	Jaguar E Type .. ..	3781	Blk/Gy

#### RESERVES:

141	J. L. S. Maclay (1st Reserve) ..	Morgan Plus Four ..	2138	Y
142	R. Joseph (2nd Reserve) ..	Turner Climax .. ..	1098	R
143	C. H. Smith (3rd Reserve) ..	Ginetta Ford G.4 ..	1098	G
218	J. R. T. Upton (4th Reserve) ..	Lotus Elite .. .. .	1226	W



## FASTEST LAPS

### RACING CARS

			secs.	m.p.h.
Formula One ..	S. Moss ..	Lotus-Climax .. ..	93.6	104.23
<i>(Outright Lap Record)</i>				
Formula Two ..	F. Gardner ..	Brabham Cosworth-Ford	98.2	99.35
Formula Three ..	C. F. S. Irwin..	Merlyn-Ford .. ..	103.6	94.17

### SPORTS CARS

			secs.	m.p.h.
Over 2000 c.c. ..	I. Ireland ..	Lotus-Climax .. ..	95.6	102.05
1151 c.c. to 2000 c.c.	J. Clark ..	Lotus-Ford .. ..	98.4	99.15
Up to 1150 c.c. ..	M. Beckwith..	Lotus-Ford .. ..	104.4	95.27

### G.T. CARS

			secs.	m.p.h.
Over 2500 c.c. ..	M. Parkes ..	Ferrari .. ..	99.6	97.95
1601 c.c. to 2500 c.c.	R. Stoop ..	Porsche 904 .. ..	107.0	91.18
1151 c.c. to 1600 c.c.	G. Warner ..	Lotus Elan .. ..	104.8	93.09
Up to 1150 c.c. ..	W. Banks ..	Turner-Climax .. ..	111.2	87.73

### TOURING CARS

			secs.	m.p.h.
Over 2000 c.c. ..	J. Brabham ..	Ford Galaxie .. ..	106.4	91.69
1301 c.c. to 2000 c.c.	J. Clark ..	Ford-Lotus Cortina ..	107.8	90.50
Up to 1300 c.c. ..	T. Mayer ..	Morris Cooper "S" ..	115.0	84.83

## FORTHCOMING EVENTS 1965

Date	Event	Classes	Notes
28 Mar.	East Anglian Cup Motor Cycle Races	All Classes	7/6d.A, 2/6d.C
3/4 April	Lambretta Reliability Trial	Scoters	No Charge
10 April	BRSCC "Autocar" International Formula 2 Trophy Race	F2/F3/T	12/6d.A, 5s.C
18 April	International Motor Cycle "Race of Aces"	All Classes	10s.A, 2/6d.C
19 April	BRSCC Snetterton Cup Car Races	FL/F3/S/GT/T	10s.A, 2/6d.C
24 April	Bantam Motor Cycle Club Races	L/Weights	5s. Rovers CF
25 April	Romford Enthusiasts Club Car Races	S/GT/T	5s. Rovers CF
2 May	British Formula R.C. Motor Cycle Races	S/GT/T	5s. Rovers CF
9 May	BRSCC Guards Cup Car Races	FL/F3/S/GT/T	10s.A, 2/6d.C Rovers
16 May	Great Eastern Trophy Motor Cycle Races	All Classes	7/6d.A, 2/6d.C
23 May	Bemsee Motor Cycle Races	All Classes	5s. Rovers CF
30 May	750 Motor Club Car Races	750/1172/S/GT/T	5s. Rovers CF
6 June	Romford Enthusiasts Club Sprint	S/GT/T	3/6d. Rovers CF
7 June	BRSCC Whitsun Cup Car Races	FL/F3/S/GT/T	10s.A, 2/6d.C
13 June	Mini-Seven Car Club Car Races	T/GT	5s. Rovers CF
20 June	British Formula R.C. Motor Cycle Races	FL/F3/S/GT/T	10s.A, 2/6d.C Rovers
27 June	BRSCC Scott-Brown Memorial Trophy Car Races	L/Weights	5s. Rovers CF
3 July	Bantam Motor Cycle Club Races	50 c.c.	5s. Rovers CF
11 July	Racing 50 Motor Cycle Club Races	FL/F3/S/GT/T	10s.A, 2/6d.C Rovers
18 July	BRSCC Cambridge Cup Car Races	Mainly S/C	7/6d.A, 2/6d.C
25 July	Eastern Sidecar Championship Races	All Classes	5s. Rovers CF
31 July	Bemsee Motor Cycle Races	All Classes	5s. Rovers CF
1 Aug.	British Formula R.C. Motor Cycle Races	50 c.c.	5s. Rovers CF
8 Aug.	Racing 50 Motor Cycle Club Races	Saloons	10s.A, 2/6d.C
15 Aug.	12-Hour European Saloon Car Championship Race	FL/F3/S/GT/T	7/6d.A, 2/6d.C Rovers
22 Aug.	West Essex C.C. Essex Trophy Races	Hist/Vint/S/GT/T	10s.A, 2/6d.C Rovers
30 Aug.	BRSCC Stanley Sears Trophy Car Races	All Classes	7/6d.A, 2/6d.C Rovers
5 Sept.	September Trophy Motor Cycle Races	All Classes	10s.A, 2/6d.C—1 Day
11 Sept.	"AUTOSPORT" 24-Hour Sports Car Race	S/GT	15s.A, 2/6d.C—2 Day
12 Sept.		S/GT/T	3/6d. Rovers CF
18 Sept.	Romford Enthusiasts Club Sprint	L/Weights	5s. Rovers CF
19 Sept.	Bantam Motor Cycle Club Races	All Classes	5s. Rovers CF
3 Oct.	Bemsee Motor Cycle Races	S/GT/T	5s. Rovers CF
10 Oct.	Romford Enthusiasts Club Car Races	L/Weights	5s. Rovers CF
16 Oct.	Bantam Motor Cycle Club Races	L/Weights	5s. Rovers CF
17 Oct.	British Formula R.C. Motor Cycle Races	L/Weights	5s. Rovers CF
23/4 Oct.	Lambretta Reliability Trial	Scoters	No Charge
31 Oct.	Cambridge University A.C. Slalom	FL/S/GT/T	3/6d. Rovers CF

KEY: A — Adults; C — Children; CF — children free of charge.  
Rovers — inclusive of entry to grandstands and paddock.

PARKING FREE AT ALL MEETINGS

## EVENT FOUR—continued

### RESULTS:

#### Class "A"—Up to 1150 c.c.:

1st	2nd	3rd
4th	5th	6th
Winner's Time		
Fastest Lap: Car No.		
Time	Speed	m.p.h.

#### Class "B"—1150 c.c. to 1600 c.c.:

1st	2nd	3rd
4th	5th	6th
Winner's Time		
Fastest Lap: Car No.		
Time	Speed	m.p.h.

#### Class "C"—1601 c.c. to 2500 c.c.:

1st	2nd	3rd
4th	5th	6th
Winner's Time		
Fastest Lap: Car No.		
Time	Speed	m.p.h.

#### Class "D"—Over 2500 c.c.:

1st	2nd	3rd
4th	5th	6th
Winner's Time		
Fastest Lap: Car No.		
Time	Speed	m.p.h.

## EVENT FOUR—LAP CHART

Pos.	1	2	3	4	5	6	7	8
1								
2								
3								
4								
5								
6								
7								
8								
9								
10								

GRID POSITIONS

<input type="checkbox"/>	<input type="checkbox"/>	<input type="checkbox"/>	<input type="checkbox"/>	<input type="checkbox"/>	<input type="checkbox"/>	<input type="checkbox"/>	<input type="checkbox"/>
<input type="checkbox"/>	<input type="checkbox"/>	<input type="checkbox"/>	<input type="checkbox"/>	<input type="checkbox"/>	<input type="checkbox"/>	<input type="checkbox"/>	<input type="checkbox"/>
<input type="checkbox"/>	<input type="checkbox"/>	<input type="checkbox"/>	<input type="checkbox"/>	<input type="checkbox"/>	<input type="checkbox"/>	<input type="checkbox"/>	<input type="checkbox"/>
<input type="checkbox"/>	<input type="checkbox"/>	<input type="checkbox"/>	<input type="checkbox"/>	<input type="checkbox"/>	<input type="checkbox"/>	<input type="checkbox"/>	<input type="checkbox"/>



second to none!



**THE GUARDS CHAMPIONSHIP**

is sponsored by Carreras,  
makers of **GUARDS**  
—exceptional filter cigarettes  
by any standard.

**3/10** TWENTY

**EVENT 5**

**GUARDS CHAMPIONSHIP RACE**

for Sports Racing Cars with an engine capacity exceeding  
1000 c.c. divided into two classes: "A" 1001 c.c. to 1150 c.c.;  
"B" Over 1150 c.c.

8 LAPS

**Class "A"—1001 c.c. to 1150 c.c.:**

NO.	ENTRANT AND DRIVER	CAR	C.C.	COL.
35	B. A. Moore .. .. .	Lotus XI .. ..	1098	Gd/W
36	Dr. J. R. Axon.. .. .	Lotus XI .. ..	1098	B
37	J. H. Delmar-Morgan .. .. .	Lotus Ford 23 .. ..	1098	M/B
38	Charles & Bowman (Camberley) Ltd. (Dvr.: C. Sawyer-Hoare)	Lotus Ford 23 .. ..	1098	Blk
39	Harold Webb Motor Racing Team (Dvr.: P. Webb)	Lotus Ford 23 .. ..	1098	B
40	McArthur Weston Racing (Dvr.: R. McArthur)	Lotus Ford 23 .. ..	1098	R
41	J. Hine .. .. .	Lotus Ford 23 .. ..	1148	R
42	W. S. Gubelmann II .. .. .	Bobsy Ford .. ..	1098	W/B
43	J. A. Murrell .. .. .	D.R.W. Ford .. ..	1098	B
44	P. V. Dillow .. .. .	Victoria Climax .. ..	1148	R
45	J. I. Payne .. .. .	Elva Climax .. ..	1148	Y

**Class "B"—Over 1150 c.c.:**

50	R. Stevens .. .. .	Lotus Ford 7 .. ..	1498	Gy
51	M. Harvey .. .. .	D.R.L. Ford .. ..	1575	B
52	A. L. Sargeant .. .. .	Merlyn Ford .. ..	1598	G
53	Rotorvic Developments (Dvr.: W. C. Hill) ..	Lotus R.D.A. .. ..	1482	B/S
65	J. Scott Davies.. .. .	Lotus Ford 23b .. ..	1490	Gd
54	Aintree Racing Team (Dvr.: J. L. Charnock)	Lotus Ford 23b .. ..	1594	G
55	A. G. Dean .. .. .	Lotus Ford 23b .. ..	1598	M
56	J.C.B. (Research) Ltd. (Dvr.: E. P. Sadler) ..	Lotus Ford 30 .. ..	4727	Y
57	P. C. O. Roberts .. .. .	Elva B.M.W. 7S .. ..	1991	S
58	Radio London Racing (Dvr.: K. J. St. John) ..	Elva B.M.W. 7S .. ..	1991	P
64	East Anglian Development (Dvr.: R. Wrottesley or T. Taylor)	Elva B.M.W. 7S .. ..	1999	
59	S. Taylor .. .. .	Brabham Climax BT8 .. ..	1999	W/G
60	Roger Nathan (Racing) Ltd. (Dvr.: R. Nathan)	Brabham Climax BT8 .. ..	1999	B
61	B. Harvey .. .. .	Lotus Elite .. ..	3499	R
62	M. B. Craker .. .. .	Cooper Monaco .. ..	3500	W/R
63	Taylor & Crawley (Surrey) Ltd. (Dvr.: D. Cunningham)	Lola Ford 70 .. ..	4700	W





Photograph by E. Gerry Stream

Big G.T. cars in action at Snetterton



Photograph by E. Gerry Stream

Angry Anglias and mighty Minis are always good value

**RESULTS:**

Class "A"—1001 c.c. to 1150 c.c.:

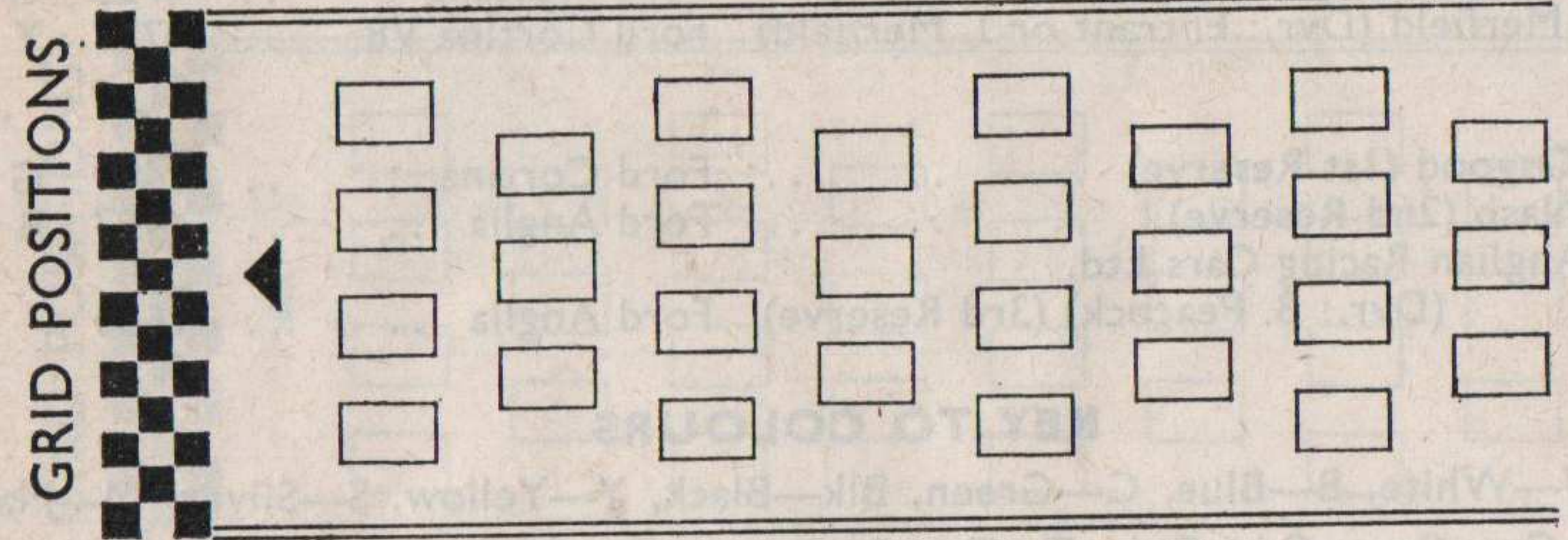
1st..... 2nd..... 3rd.....  
 4th..... 5th..... 6th.....  
 Winner's Time..... Speed..... m.p.h.  
 Fastest Lap: Car No..... Time..... Speed..... m.p.h.

Class "B"—Over 1150 c.c.:

1st..... 2nd..... 3rd.....  
 4th..... 5th..... 6th.....  
 Winner's Time..... Speed..... m.p.h.  
 Fastest Lap: Car No..... Time..... Speed..... m.p.h.

**EVENT FIVE—LAP CHART**

Pos. ▼	1	2	3	4	5	6	7	8
1								
2								
3								
4								
5								
6								
7								
8								
9								
10								





# EVENT 6

## SALOON CAR RACE "B"

For Special Saloon Cars in two classes:  
"B" 851 c.c. to 1000 c.c.; "D" Over 1300 c.c.

8 LAPS

### Class "B"—851 c.c. to 1000 c.c.:

NO.	ENTRANT AND DRIVER	CAR	C.C.	COL.
180	R. J. Parkinson	Morris Cooper S	970	G/W
181	R. Penwarden	Morris Cooper S	970	Y/W
182	R. G. Brindley	Morris Cooper S	970	G/W
183	M.P.G. & H. Engineering (Dvr.: R. Henderson)	Morris Cooper S	970	W/Blk
214	Ross Racing (Dvr.: B. M. Ross)	Morris Cooper S	992	Bz/Blk
184	P. Tomlin	Austin Cooper S	970	B
185	Team Broadspeed (Dvr.: I. McDougall)	Austin Cooper S	970	M/Gy
186	Miss L. McKechnie	Austin Cooper S	970	B/G
187	Grendon Garage (Dvr.: M. Golden)	Austin Cooper S	970	B
188	C. Youle	Austin Cooper S	970	R/Blk
189	M. Pigneguy	Austin Cooper S	999	S/M
190	Newtune (Dvr.: G. D. R. Marshall)	Austin Cooper S	999	M/S
191	J. S. Prince	Austin Cooper	998	B/Blk
192	B. M. Rigby	Austin Cooper	998	B
193	A. D. Laycock	Austin Cooper	998	G/W
195	A. D. Henning	Austin Cooper	998	Blk/W
196	C. Baker-Duly	Morris Cooper	998	G/W
197	M. S. Kay	Morris Cooper	998	W/Y
198	R. Thompson	Austin Cooper	997	B/W
199	V. J. C. Hazard	Austin Cooper	997	Blk/Y
215	G. E. Janzen	Austin Cooper	997	B/W
201	M.P.G. & H. Engineering (Dvr.: N. Edginton)	Morris Cooper	997	Y/W
216	M. Lacey	Ford Anglia	997	B

### Class "D"—Over 1300 c.c.:

202	P. C. Clarke	L.M.B. Ford Popular (supercharged)	1172	R
203	M. Caulton	Austin Cooper S	1370	O/Blk
204	E. W. Bunce	Tornado Talisman	1594	G
205	Curtis Smith Racing Team (Dvr.: R. H. Smith)	Lotus Cortina	1594	W
206	Promecon Engineering (Dvr.: M. Mulcrone)	Austin A40	1650	B/Y
207	Kaysport Speed Equipment (Dvr.: W. Camp)	Ford Anglia	1650	B
208	H. Fawsitt (Dvr.: Entrant or E. Plumridge)	Ford Anglia	1650	R
209	Aylesbury Tuning Co. (Dvr.: P. de Banks)	Ford Anglia	1650	Y
210	R. E. Reader (Dvr.: T. Drury)	Ford Anglia	1718	W
211	K. Baker (Dvr.: Entrant or A. Powell)	Ford Mustang	4725	G
212	D. P. Merfield (Dvr.: Entrant or J. Merfield)	Ford Cortina V8	4727	Y

### RESERVES:

217	J. A. Osgood (1st Reserve)	Ford Cortina	1499	G
179	L. S. Nash (2nd Reserve)	Ford Anglia	997	B
221	East Anglian Racing Cars Ltd. (Dvr.: B. Peacock) (3rd Reserve)	Ford Anglia	1650	

### KEY TO COLOURS

R—Red, W—White, B—Blue, G—Green, Blk—Black, Y—Yellow, S—Silver, M—Maroon,  
C—Cream, Gy—Grey, Gd—Gold, T—Tan, P—Purple, O—Orange, Bz—Bronze.

## RESULTS:

Class "B"—851 c.c. to 1000 c.c.:

1st	2nd	3rd
4th	5th	6th
Winner's Time	Speed	m.p.h.
Fastest Lap	Time	Speed
		m.p.h.

Class "D"—Over 1300 c.c.:

1st	2nd	3rd
4th	5th	6th
Winner's Time	Speed	m.p.h.
Fastest Lap	Time	Speed
		m.p.h.

## EVENT SIX—LAP CHART

Pos.	1	2	3	4	5	6	7	8
1								
2								
3								
4								
5								
6								
7								
8								
9								
10								

GRID POSITIONS

<input type="checkbox"/>	<input type="checkbox"/>	<input type="checkbox"/>	<input type="checkbox"/>	<input type="checkbox"/>	<input type="checkbox"/>	<input type="checkbox"/>	<input type="checkbox"/>	<input type="checkbox"/>
<input type="checkbox"/>	<input type="checkbox"/>	<input type="checkbox"/>	<input type="checkbox"/>	<input type="checkbox"/>	<input type="checkbox"/>	<input type="checkbox"/>	<input type="checkbox"/>	<input type="checkbox"/>
<input type="checkbox"/>	<input type="checkbox"/>	<input type="checkbox"/>	<input type="checkbox"/>	<input type="checkbox"/>	<input type="checkbox"/>	<input type="checkbox"/>	<input type="checkbox"/>	<input type="checkbox"/>
<input type="checkbox"/>	<input type="checkbox"/>	<input type="checkbox"/>	<input type="checkbox"/>	<input type="checkbox"/>	<input type="checkbox"/>	<input type="checkbox"/>	<input type="checkbox"/>	<input type="checkbox"/>



# BRITISH RACING AND SPORTS CAR CLUB

*The Club for the Enthusiast*

## MEMBERSHIP FACILITIES INCLUDE

"MOTOR RACING".....A free copy every month  
 CLUB NIGHTS.....Film Shows, talks, etc., monthly  
 RACE MEETINGS.....Special viewing facilities  
 ANNUAL RACING CAR SHOW.....Free admission  
 CLUB INSIGNIA.....Car, Lapel & Blazer Badges, Ties, etc.  
 CIRCUIT RACING.....Throughout the year on eight different Circuits  
 PROVINCIAL CENTRES.....Covering the whole country  
 ANNUAL DINNER & DANCE.....A grand social occasion  
 MIDNIGHT FILM SHOWS.....A night out in London  
 CLUB SHOP.....Open during Brands Hatch events

## TO JOIN

Complete now the application form below and post to the Club Office with your remittance as follows:—

ANNUAL SUBSCRIPTION .. .. .	£2 2 0
ENTRY FEE .. .. .	£1 1 0
ON APPLICATION .. .. .	£3 3 0

GENERAL SECRETARY: N. SYRETT.  
 Trafalgar 1351/2/3.

6, BUCKINGHAM STREET,  
 LONDON, W.C.2.

## APPLICATION FOR MEMBERSHIP

Name (in Full).....  
 (BLOCK LETTERS)

Address .....

Occupation .....

Tel. No.: HOME..... BUSINESS.....

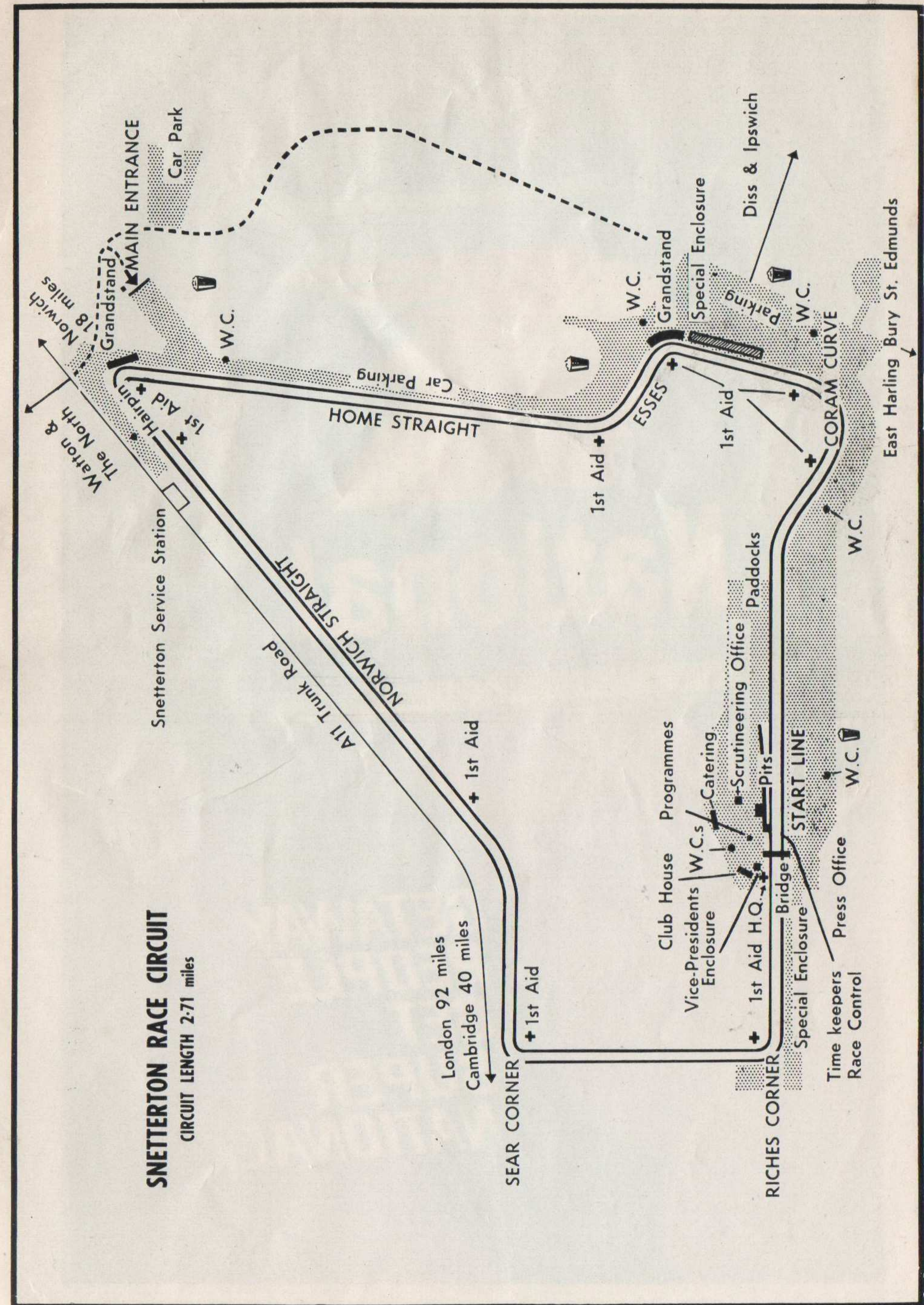
Nationality..... Date of Birth.....

I hereby make application to become a member of the British Racing & Sports Car Club Limited and if elected, I undertake to abide by the Rules of the Club.

Signature..... Date.....

Proposer..... Secondar.....

If the applicant does not know any member to sign above he should include name and address and occupation of a responsible person to whom application can be made. If you wish to be placed on the B.R.S.C.C. Racing Register please enclose a fee of 5/-.







**GETAWAY  
PEOPLE  
GET  
SUPER  
NATIONAL**